

4

3

2

1

THIS DRAWING IS UNPUBLISHED.

RELEASED FOR PUBLICATION

© COPYRIGHT

ALL RIGHTS RESERVED.

LOC

DIST


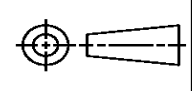
REVISIONS

P	LTR	DESCRIPTION	DATE	DWN	APVD
	B1	ECR-18-005440	13APR18	GK	SD

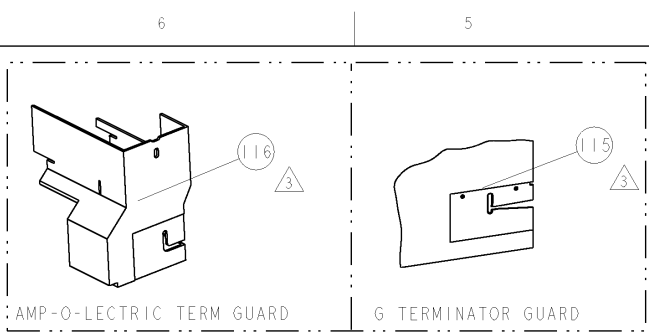
REPLACED BY OCEAN STYLE APPLICATOR PART
NUMBER 2836761-1


FOR REPLACEMENT PARTS FOR APPLICATOR 1855305
REFER TO ADDITIONAL PAGE(S). SPARE PARTS KIT (IF LISTED)
WILL REMAIN AVAILABLE.

THE REPLACEMENT OCEAN STYLE APPLICATOR HAS THE
SAME TERMINATOR/PRESS INTERFACE AS APPLICATOR
1855305

THIS DRAWING IS A CONTROLLED DOCUMENT.		DWN	GOPALAKRISHNA HV		 TE Connectivity			
		CHK	GOPALAKRISHNA HV					
DIMENSIONS:		TOLERANCES UNLESS OTHERWISE SPECIFIED:		APVD	NAME			
		0 PLC ± 1 PLC ± 2 PLC ± 3 PLC ± 4 PLC ± ANGLES ±		STOUGH DALE		FINE ADJUST SIDE FEED HDM APPLICATOR		
				PRODUCT SPEC				
				APPLICATION SPEC				
				WEIGHT				
MATERIAL		FINISH		SIZE	CAGE CODE	DRAWING NO	RESTRICTED TO	
				A3		©- 1855305		
CUSTOMER ACCESSIBLE PRODUCTION DRAWING				SCALE	SHEET 1 OF 2	REV	B1	

8				7							
THIS DRAWING IS UNPUBLISHED.				RELEASED FOR PUBLICATION				20			
C) COPYRIGHTED				BY TYCO ELECTRONICS CORPORATION. ALL RIGHTS RESERVED.							
PART NUMBER		REV	FIRST USED	POWER UNIT		FEED TYPE		DESCRIPTION			
1855305-1		B	122500-1	LEADMAKER		POST FEED		CUTS CARRIER			
1855305-2		B	565435-5	BENCH MODEL K		PRE FEED		CUTS CARRIER			
1855305-3		B	354500-1	BENCH MODEL G		PRE FEED		CUTS CARRIER			
1855305-6		A	122500-1	LEADMAKER		POST FEED		CONTINUOUS CARRIER			
7-1855305-7		A	-	-		-		SPARE PARTS			

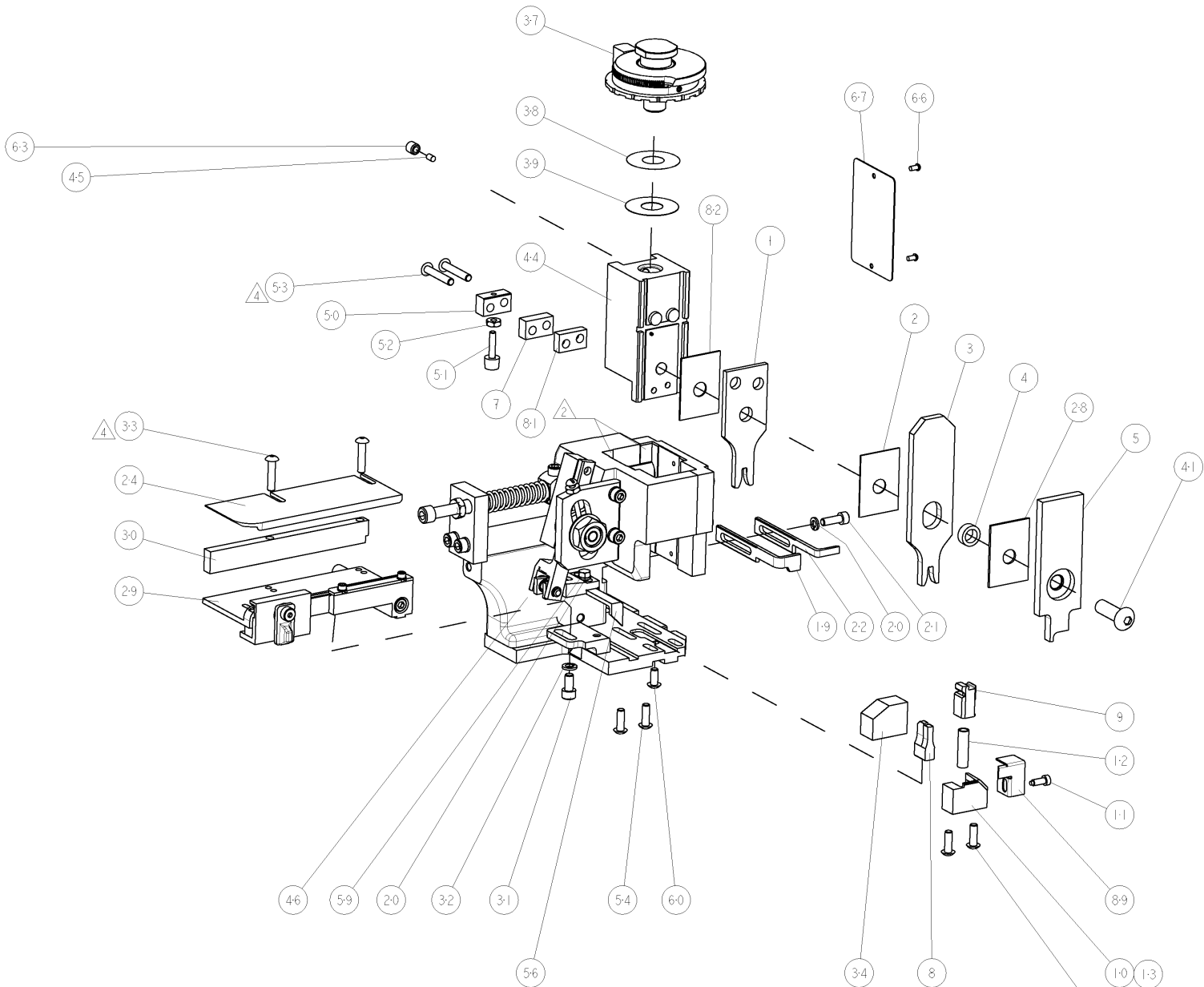


TERMINAL NAME: TERM M M/P 630 SERIES							
TE PN	MFR PN	PACKARD TERMINAL-PACKARD CRIMP SPECS					
1949404-1	12020126					REF SETTING	
-	-	CRIMP HEIGHT		WIRE SIZE			
-	-	1.65±0.05mm [.065±.002]		2mm2			
-	-	1.55±0.05mm [.061±.002]		1.5mm2			
-	-	1.55±0.05mm [.061±.002]		1mm2			
-	-			-		-	
-	-	CRIMP	SIZE	TYPE	RANGE		
-	-						
-	-	WIRE	2.97mm [.117]	F	1.00-2.00		
-	-	INSUL	3.66mm [.144]	F	Ø3.56 MAX		
WIRE STRIP LENGTH 4.85-5.23	TERM APPL SPEC NONE	FEED 17.45mm	APPLICATOR INSTRUCTIONS 408-8040		SET UP GAGE 458637-1		


REVISIONS					
REV	DATE	BY	CHK	APP	DESCRIPTION
A	11JUL2007	BH	BH		RELEASED
B	21OCT2009	MY	TE		ECR-09-023063

- △ RECOMMENDED SPARE PARTS
△ GREASE LIGHTLY
△ GUARD MUST BE IN PLACE WHEN OPERATING APPLICATOR IN A BENCH MACHINE
△ CUT TO LENGTH AT ASSEMBLY.

*** WARNING**
ON INSTALLATION, SET WIRE DISC TO LARGEST WIRE SIZE SETTING. USE OF SETTINGS BELOW MIN. REQUIRED CRIMP HEIGHT SETTING WILL CAUSE DAMAGE TO CRIMP TOOLING.



△	-	-	-	REF	-	..	455749-1	GUARD WINDOW	116
△	-	-	REF	-	-	..	679532-1	INSERT, GUARD	115
-	1	1	1	1	-	-	1-21002-7	SCR, BTN SKT HD CAP 6-32 X .375	91
-	1	1	1	1	-	-	318563-1	GUARD, FRONT CHIP	89
-	1	1	1	1	-	-	455888-7	SPACER, CRIMPER	82
-	1	1	1	1	-	-	7-240641-1	SPACER	81
-	1	1	1	1	-	-	4088040	SF APPL INST 408-8040	72
-	1	1	1	1	-	-	217238-1	GENERAL INSTRUCTION PKG	71
-	1	1	1	1	-	-	461264-5	PLATE, IDENTIFICATION	67
-	2	2	2	2	-	-	21017-2	SCREW, DRIVE	66
-	1	1	1	1	-	-	21009-2	SCR, SET, SELF LOCKING 1/4-20 X .250	63
-	1	1	1	1	-	-	22733-8	SCR, BHSC, SELF-LOCKING, 8-32 X .375	60
-	1	1	1	1	-	-	2-22603-0	SCR, HEX HD CAP 8-32 X .312	59
-	1	1	1	1	-	-	458537-2	PAWL, FEED	56
-	4	4	4	4	-	-	2-21002-2	SCR, BTN SKT HD CAP 8-32 X .500	54
△	-	2	2	2	2	-	8-21002-9	SCR, BTN SKT HD CAP 8-32 X 1.00	53
-	1	1	1	1	-	-	21018-5	NUT, HEX, REG 6-32	52
-	1	1	1	1	-	-	811242-2	BUMPER, HOLD DOWN	51
-	1	1	1	1	-	-	690753-1	SPACER, TONKER	50
-	-	-	-	-	-	..	690602-6	CAM, PRE FEED, 1 5/8	49
-	-	-	-	-	-	..	690602-5	CAM, PRE FEED, 1 1/8	48
-	1	-	-	-	-	-	690501-4	CAM, POST-FEED 1 5/8	47
-	1	1	1	1	-	-	459456-1	APPL. BASIC SUB ASSY (SIDE WISE MQCA)	46
-	1	1	1	1	-	-	690191-1	PLUG, NYLON	45
-	1	1	1	1	-	-	819307-4	RAM, SIDE FEED	44
-	1	1	1	1	-	-	7-21002-9	SCR, BTN SKT HD CAP 5/16-24 X 1.00	41
-	1	1	1	1	-	-	690125-1	SHIM SUB-ASSY	39
-	1	1	1	1	-	-	469367-3	SHIM	38
-	1	1	1	1	-	-	879103-2	FINE ADJUST HEAD ASSEMBLY	37
-	1	1	1	1	-	-	690786-3	TERMINAL SUPPORT	34
△	-	2	2	2	2	-	2-21002-4	SCR, BTN SKT HD CAP 8-32 X .750	33
-	1	1	1	1	-	-	21024-5	WASHER, SPRG LOCK, REG NO 10	32
-	1	1	1	1	-	-	3-21000-4	SCR, SKT HD CAP 10-32 X .375	31
-	1	1	1	1	-	-	1320908-2	SPACER, STRIP GUIDE	30
-	1	1	1	1	-	-	1633091-7	ASSEMBLY, STRIP GUIDE	29
-	1	1	1	1	-	-	1-455888-0	SPACER, CRIMPER	28
-	1	1	1	1	-	-	1320928-3	PLATE, STRIP GUIDE	24
-	1	-	-	-	-	-	690472-2	STRIPPER	22
-	1	1	1	1	-	-	2-21000-7	SCR, SKT HD CAP 8-32 X .500	21
-	2	2	2	2	-	-	21024-4	WASHER, SPRG LOCK, REG NO 8	20
-	-	-	-	-	-	-	691353-1	STRIPPER	19
△	-	1	-	-	-	-	679625-1	SHEAR HOLDER, FRONT (NO CUT)	13
△	-	1	1	1	1	-	3-22280-3	SPRING, COMPRESSION	12
△	-	1	1	1	1	-	690461-1	STOP, SHEAR	11
△	-	-	1	1	1	-	690459-1	SHEAR HOLDER, FRONT	10
△	-	1	1	1	1	-	454276-1	FLOATING SHEAR, FRONT	9
△	1	1	1	1	1	-	2-1633535-8	ANVIL, COMBINATION	8
-	1	1	1	1	-	-	4-240641-5	SPACER	7
-	1	1	1	1	-	-	2-455889-0	DEPRESSOR, SHEAR	5
-	1	1	1	1	-	-	238011-3	BLOCK, CRIMPER SPACER	4
△	1	1	1	1	1	-	5-1633471-5	CRIMPER, INSULATION F	3
△	-	1	1	1	1	-	455888-5	SPACER, CRIMPER	2
△	-	1	1	1	1	-	9-1633305-6	CRIMPER, WIRE PREMIUM	1
-	77	-6	-3	-2	-1	U/M	PART NO	DESCRIPTION	ITEM NO

THIS DRAWING IS UNPUBLISHED. RELEASED FOR PUBLICATION COPYRIGHT 20 BY TYCO ELECTRONICS CORPORATION. ALL RIGHTS RESERVED. SHOULD BE CONTACTED FOR THE LATEST INFORMATION.		OWN B. HIGMAN 26FEB2005		tyco Electronics		Tyco Electronics Harrisburg, PA 17105-3608			
DIMENSIONS: INCHES		TOLERANCES UNLESS OTHERWISE SPECIFIED:		NAME		FINE ADJUST SIDE FEED HDM APPLICATOR			
		0 PLC ±.001 2 PLC ±.001 3 PLC ±.001 4 PLC ±.001 5 PLC ±.001 6 PLC ±.001 7 PLC ±.001 8 PLC ±.001 9 PLC ±.001 10 PLC ±.001 11 PLC ±.001 12 PLC ±.001 13 PLC ±.001 14 PLC ±.001 15 PLC ±.001 16 PLC ±.001 17 PLC ±.001 18 PLC ±.001 19 PLC ±.001 20 PLC ±.001 21 PLC ±.001 22 PLC ±.001 23 PLC ±.001 24 PLC ±.001 25 PLC ±.001 26 PLC ±.001 27 PLC ±.001 28 PLC ±.001 29 PLC ±.001 30 PLC ±.001 31 PLC ±.001 32 PLC ±.001 33 PLC ±.001 34 PLC ±.001 35 PLC ±.001 36 PLC ±.001 37 PLC ±.001 38 PLC ±.001 39 PLC ±.001 40 PLC ±.001 41 PLC ±.001 42 PLC ±.001 43 PLC ±.001 44 PLC ±.001 45 PLC ±.001 46 PLC ±.001 47 PLC ±.001 48 PLC ±.001 49 PLC ±.001 50 PLC ±.001 51 PLC ±.001 52 PLC ±.001 53 PLC ±.001 54 PLC ±.001 55 PLC ±.001 56 PLC ±.001 57 PLC ±.001 58 PLC ±.001 59 PLC ±.001 60 PLC ±.001 61 PLC ±.001 62 PLC ±.001 63 PLC ±.001 64 PLC ±.001 65 PLC ±.001 66 PLC ±.001 67 PLC ±.001 68 PLC ±.001 69 PLC ±.001 70 PLC ±.001 71 PLC ±.001 72 PLC ±.001 73 PLC ±.001 74 PLC ±.001 75 PLC ±.001 76 PLC ±.001 77 PLC ±.001 78 PLC ±.001 79 PLC ±.001 80 PLC ±.001 81 PLC ±.001 82 PLC ±.001 83 PLC ±.001 84 PLC ±.001 85 PLC ±.001 86 PLC ±.001 87 PLC ±.001 88 PLC ±.001 89 PLC ±.001 90 PLC ±.001 91 PLC ±.001 92 PLC ±.001 93 PLC ±.001 94 PLC ±.001 95 PLC ±.001 96 PLC ±.001 97 PLC ±.001 98 PLC ±.001 99 PLC ±.001 100 PLC ±.001		APVD T. ELGIN 26FEB2005		PRODUCT SPEC		APPLICATION SPEC	
MATERIAL		FINISH		WEIGHT		NONE			
CUSTOMER DRAWING		SCALE		3:5		SHEET 1 OF 1 REV B			
CUSTOMER ACCESSIBLE PRODUCTION DRAWING									