

D

D

C

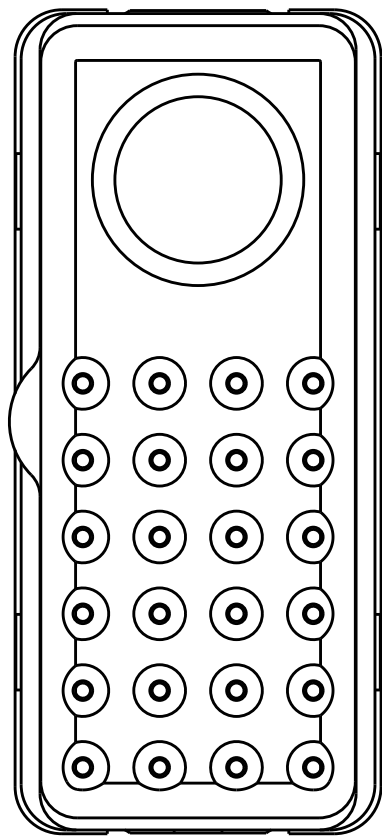
C

B

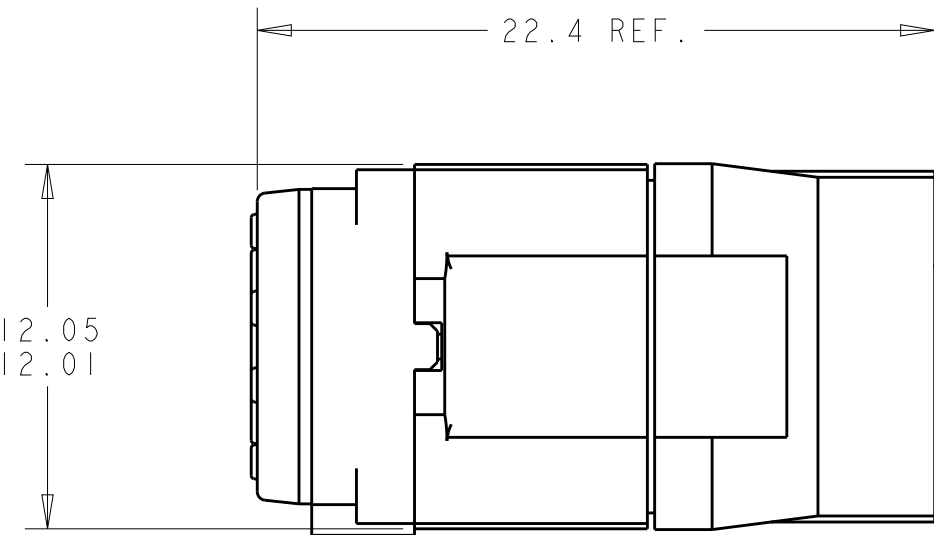
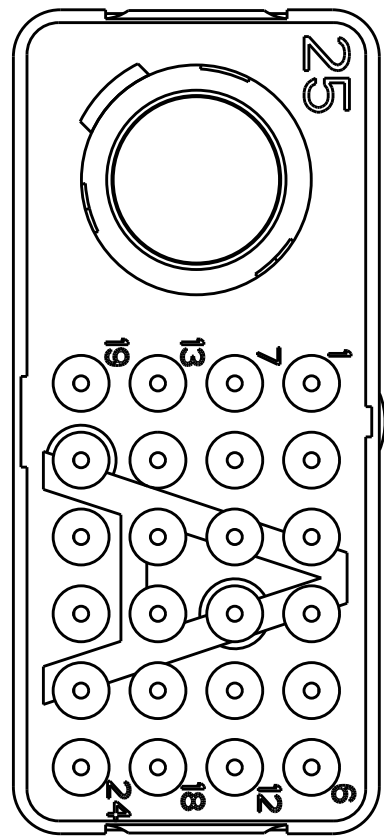
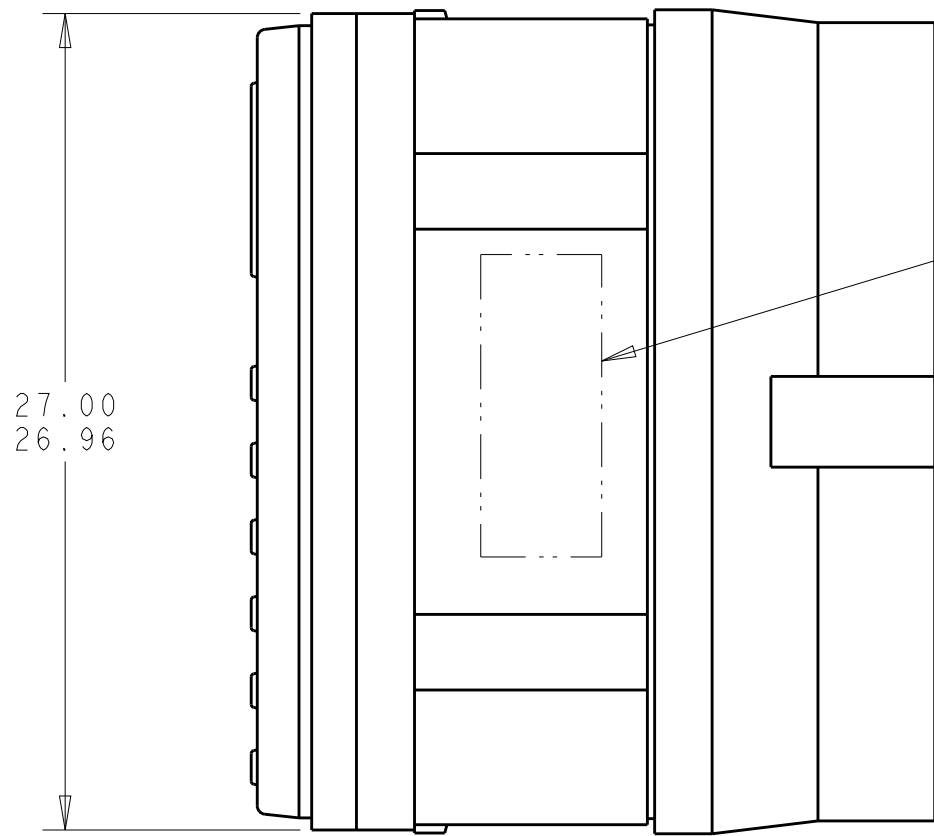
B

A

A



MATING FACE



- 1

FRONT & REAR INSULATORS: HIGH-TEMP THERMOPLASTIC OR THERMOSET EPOXY PER ASTM D5948.
CONTACT RETENTION CLIPS: STAINLESS STEEL PER AISI 302 OR COPPER ALLOY PER ASTM B194
REAR GROMMET & INTERFACIAL SEAL: FLUOROSILICONE ELASTOMER PER MIL-R-25988 B EXCEPT 4.6.6.1.
- 2


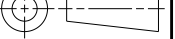

PART TO BE MARKED WITH TE IDENTIFICATION, TE PART NO.
AND DATE CODE: YEAR & WEEK (YY WW) IN APPROXIMATE AREA SHOWN.
3.

THIS INSERT CONTAINS: 24 CAVITIES FOR SIZE 22 PIN CONTACTS
1 CAVITY FOR SIZE 8 QUADRAX PIN CONTACTS.
4.

THIS PRODUCT IS SOLD BY TYCO ELECTRONICS UNDER A LICENSE FROM RADIAL SA.

THIS PRODUCT HAS NOT COMPLETED VALIDATION TESTING

ENVIRONMENTAL	GPRBE25Q1PA	1811121-1
REMARKS	DESCRIPTIVE PART NUMBER	PART NUMBER

THIS DRAWING IS A CONTROLLED DOCUMENT.		DWN BW	19MAY2005	<div>TE Connectivity</div>		
		CHK JPM	19MAY2005			
		APVD JPM	19MAY2005	NAME INSERT ASSEMBLY, PIN, ENVIRONMENTAL, ARRANGEMENT 25Q1, KEY A, GPRB		
DIMENSIONS:		TOLERANCES UNLESS OTHERWISE SPECIFIED:				
mm		0 PLC ± 1 PLC ± 2 PLC ±0.05 3 PLC ± 4 PLC ± ANGLES ± FINISH		PRODUCT SPEC - APPLICATION SPEC - WEIGHT - CUSTOMER DRAWING		
				SIZE A200779		
MATERIAL 				CAGE CODE C-1811121		
				DRAWING NO C-1811121		
				RESTRICTED TO -		
				SCALE 4:1		
				SHEET 1		
				OF 1		
				REV C		