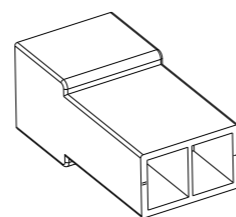
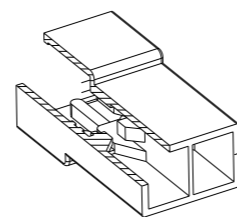
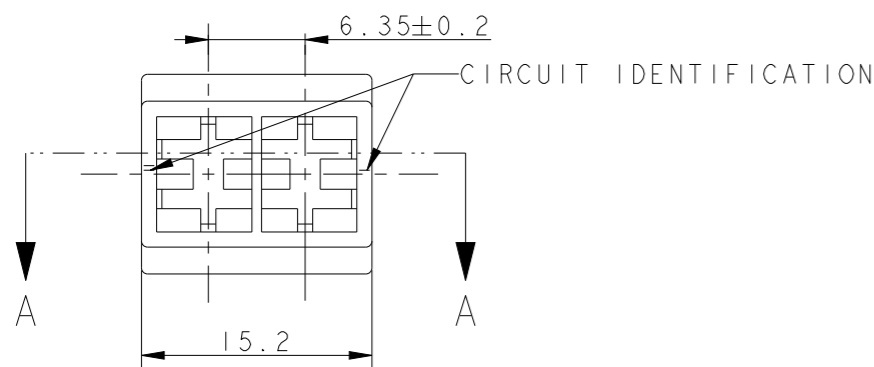


LOC  
IR

DIST  
-

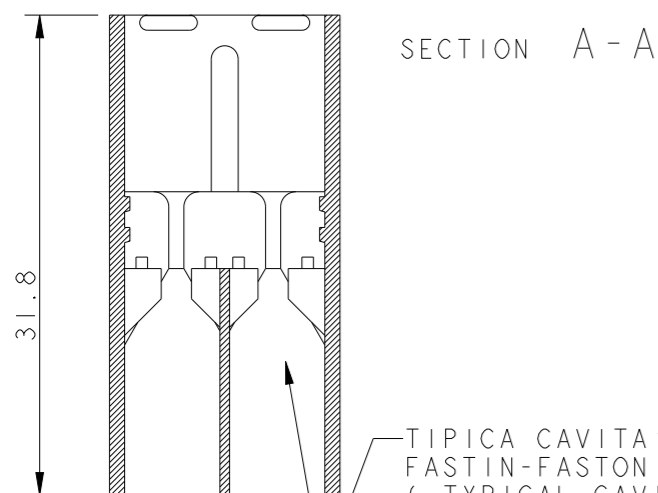
REVISIONS

| P   | LTR | DESCRIPTION                      | DATE      | DWN | APVD |
|-----|-----|----------------------------------|-----------|-----|------|
| AM9 |     | CIRCUIT IDENTIFICATION CORRECTED | 30JUN2011 | PKS | RRP  |
| ANI |     | REVISED PER ECR-21-101990        | 19APR2021 | SS  | EW   |



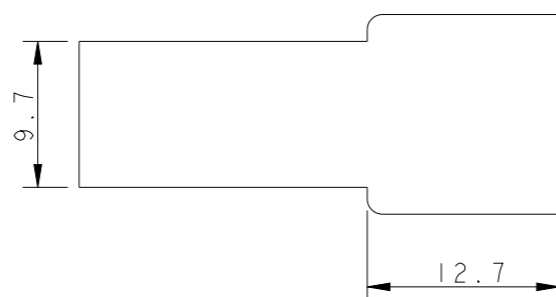
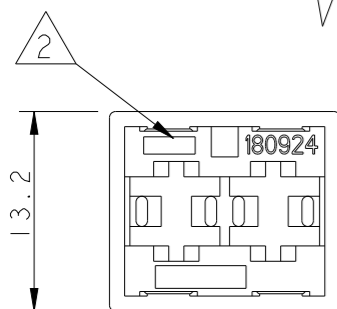
SCALE 1:1

- 1 MARCHIO (TRADEMARK / LOGO)
- 2 NUMERO DI IMPRONTA STAMPO (MOULD CAVITY IDENTIFICATION NO.)
- 3 RISERVATO PER TE JAPAN (RESTRICTED FOR TE JAPAN)
- 4 NON DISPONIBILE DA TE ITALIA (NO MORE AVAILABLE FROM TE ITALY)
- 5 RISERVATO PER TE DE FRANCE (RESTRICTED FOR TE DE FRANCE)
- 6 P/Ns 180924-0/-1/-5/2-...-0: DISPONIBILE DA TE GB VERSIONE CON CAVITA' ASIMMETRICHE, RISPETTIVAMENTE CON I P/Ns 1337024-1/-2/-3/-4. (P/Ns 180924-0/-1/-5/2-...-0: ASYMMETRIC CAVITIES VERSION AVAILABLE FROM TE GB RESPECTIVELY WITH P/Ns 1337024-1/-2/-3/-4).
- 7 ACCEPTED ONE RETENTION RIB FOR THE TOTAL LENGTH OF THE HOUSING ON BOTH SIDES.
- 8 OBSOLETE PARTS: OBSOLETE CIS STREAMLINING PER D.RENAUD/D.SINISI
- 9 INTERNAL FLASH INSIDE CAVITY (THIN AND FLEXIBLE THAT DO NOT COME OFF) ACCEPTABLE UP TO 0.15 mm. EXTERNAL FLASH ACCEPTABLE UP TO 0.4 mm



SECTION A-A

TIPICA CAVITA' PER TERMINALE TE FASTIN-FASTON SR. 6.35mm.  
( TYPICAL CAVITY FOR TE CONTACT FASTIN-FASTON .250" SRS. )

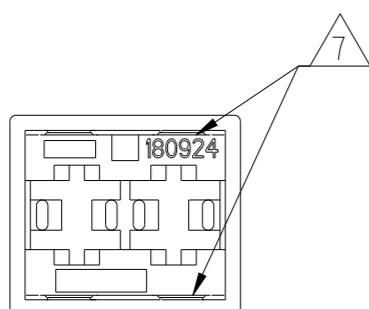


8 OBSOLETE

8 OBSOLETE

| NOTE | COLORE (COLOUR)    | MATERIALE (MATERIAL)                     | REV. | NUMERO (PART NUMBER)  |
|------|--------------------|--|------|-----------------------|
| 3    | NATURALE (NATURAL) | PA 6.6 (VERGINE) (PA 6.6, VIRGIN)        | AM   | <del>0-180924-0</del> |
| 4    | NATURALE (NATURAL) | PA 6.6 UL94-V0 (PA 6.6 UNFILLED UL94-V0) | AM   | 4-180924-0            |
| 5    | NATURALE (NATURAL) | PA 6.6 (PA 6.6 UNFILLED)                 | AM   | 3-280924-0            |
| 4    | VIOLETTO (VIOLET)  | PA 6.6 (PA 6.6 UNFILLED)                 | AM   | 0-180924-8            |
| 4    | MARRONE (BROWN)    |  | AM   | 0-180924-6            |
| 6    | NERO (BLACK)       |  | AM   | 0-180924-5            |
| 4    | GIALLO (YELLOW)    |  | AM   | 0-180924-4            |
| 6    | ROSSO (RED)        |  | AM   | <del>0-180924-1</del> |
| 6    | NATURALE (NATURAL) |  | AM   | 0-180924-0            |

ALTERNATIVE VIEW FOR RETENTION RIBS



THIS DRAWING IS A CONTROLLED DOCUMENT.

DWN H. YAALI 09JUL2002  
CHK C. TARTARI  
APVD -

DIMENSIONS: mm

TOLERANCES UNLESS OTHERWISE SPECIFIED:

|        |           |
|--------|-----------|
| 0 PLC  | ±-        |
| 1 PLC  | ±0.3      |
| 2 PLC  | ±-        |
| 3 PLC  | ±-        |
| 4 PLC  | ±-        |
| ANGLES | ±2°       |
| FINISH | SEE TABLE |

MATERIAL SEE TABLE

PRODUCT SPEC 108-20020

APPLICATION SPEC -

WEIGHT 2.2 g

CUSTOMER DRAWING

SCALE 2:1

SHEET 1 OF 1

REV ANI

TE Connectivity

FASTIN-FASTON Connector, .250 srs. TAB HOUSING, 2 POSITIONS

SIZE A3 CAGE CODE 00779 DRAWING NO C-180924 RESTRICTED TO