

THIS DRAWING IS UNPUBLISHED. RELEASED FOR PUBLICATION 20  
 © COPYRIGHT 20 BY - ALL RIGHTS RESERVED.

REVISIONS					
P	LTR	DESCRIPTION	DATE	DWN	APVD
C2		REVISED PER ECR-14-001994	11FEB2014	A.Z	D.Z
D		REVISED PER ECR-19-009721	01JUL2019	M.G	D.Z

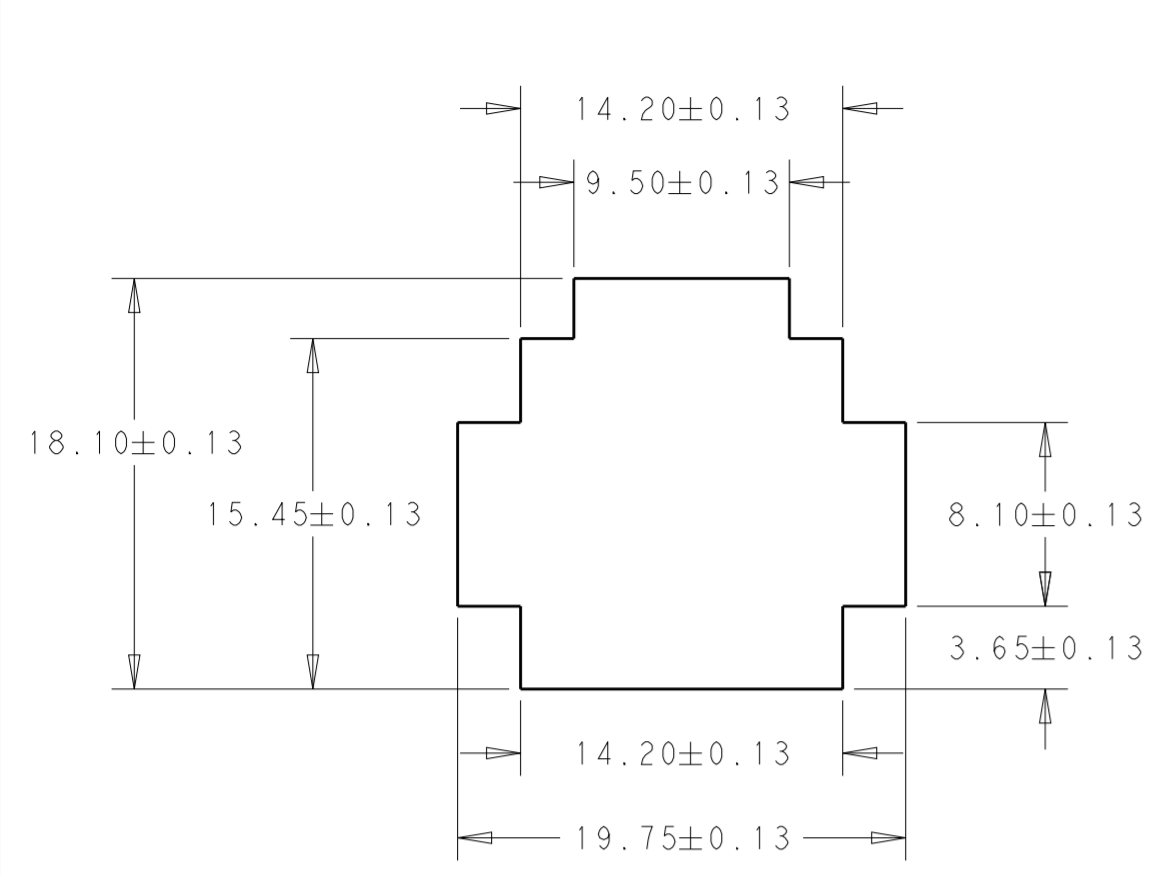
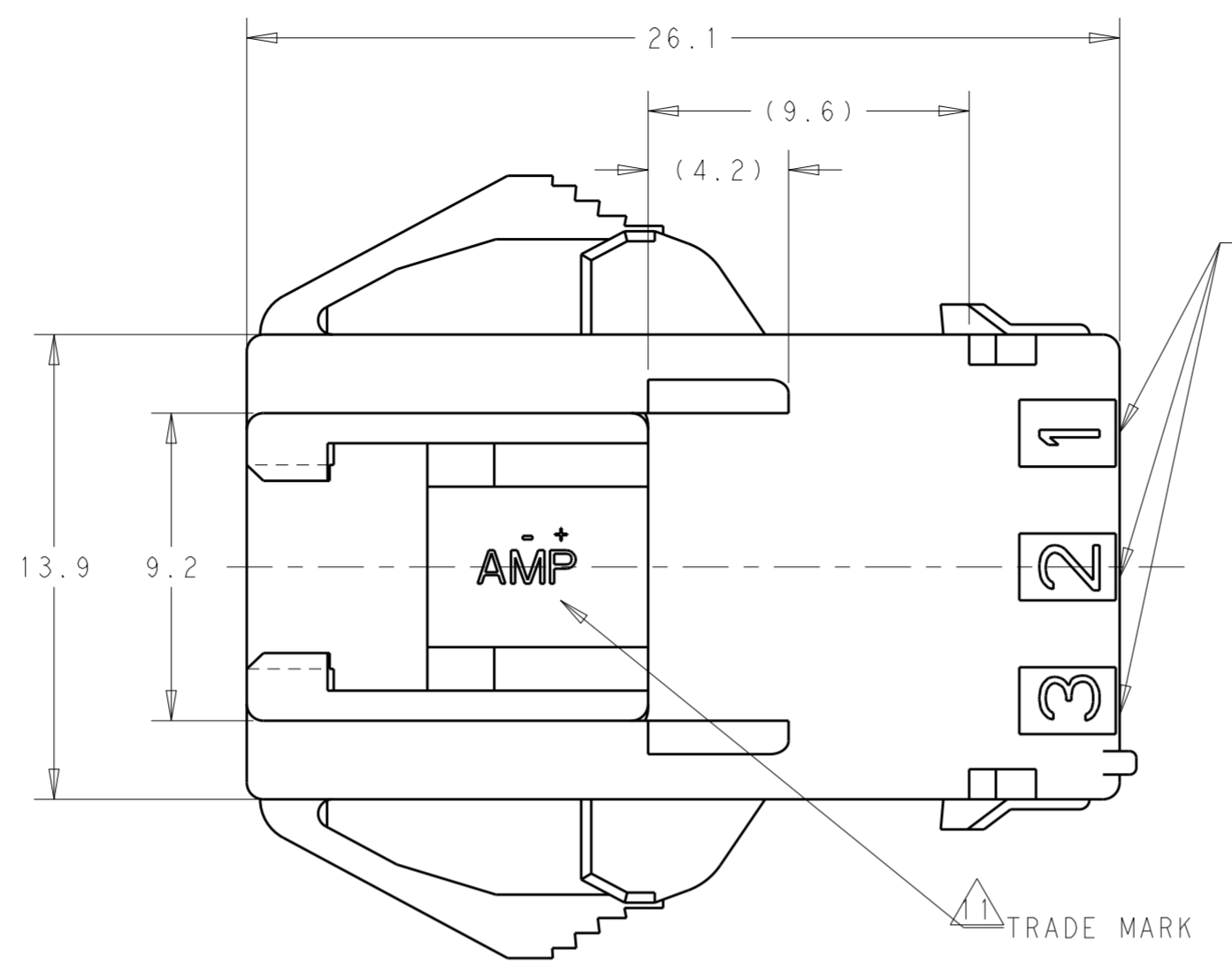
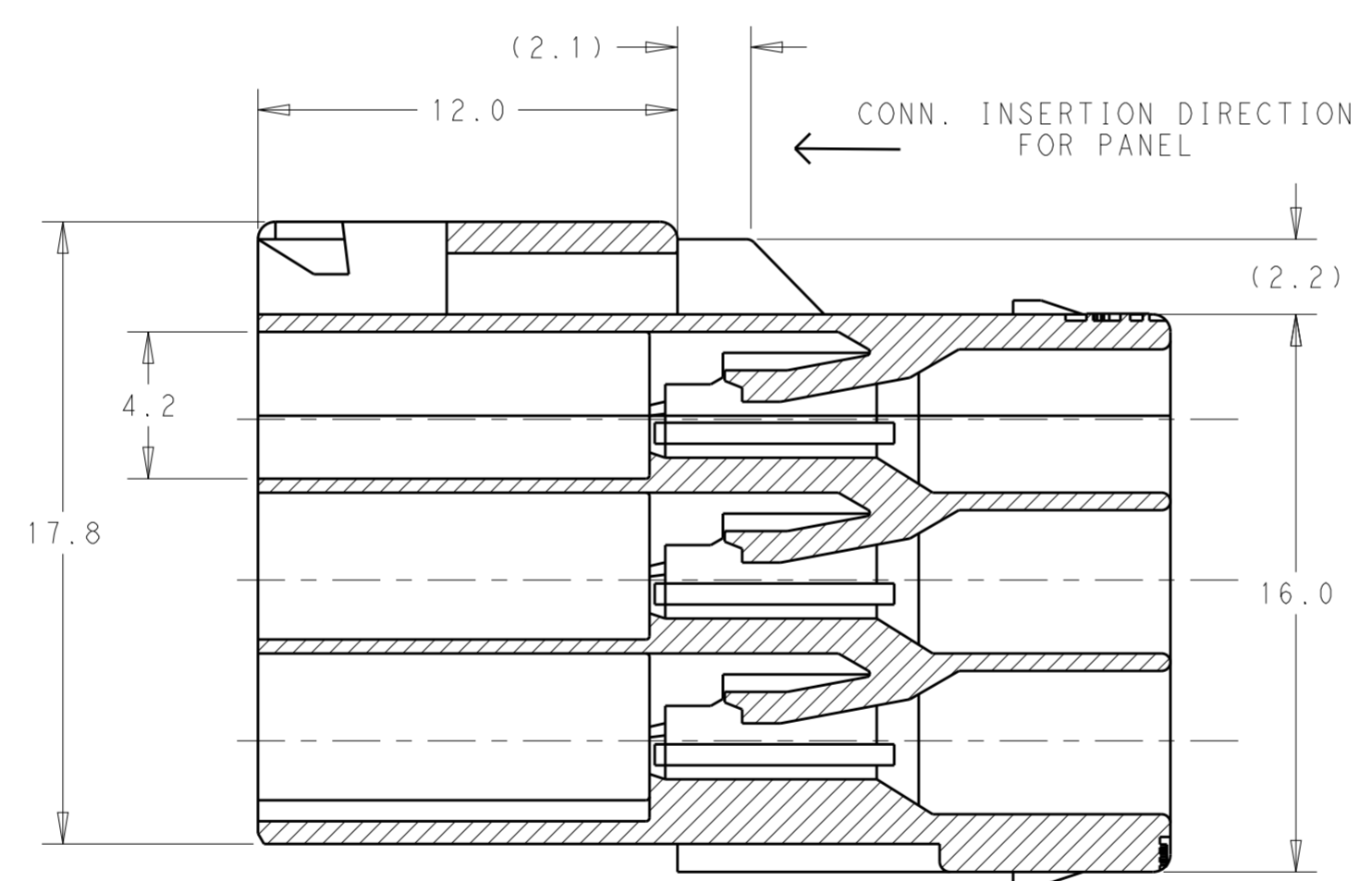
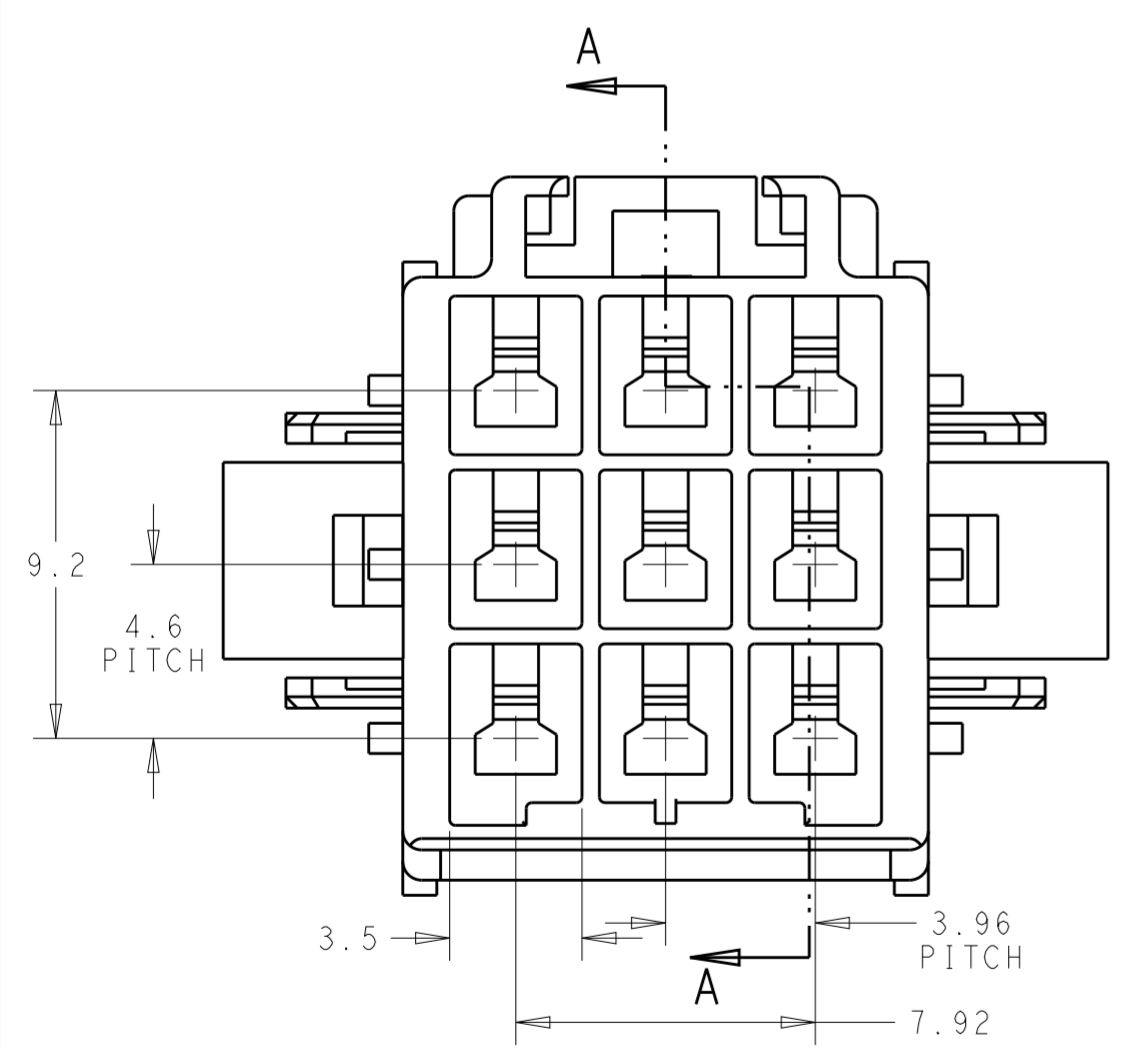


FIG 1  
RECOMMENDED PANEL OPENING DIMENSION

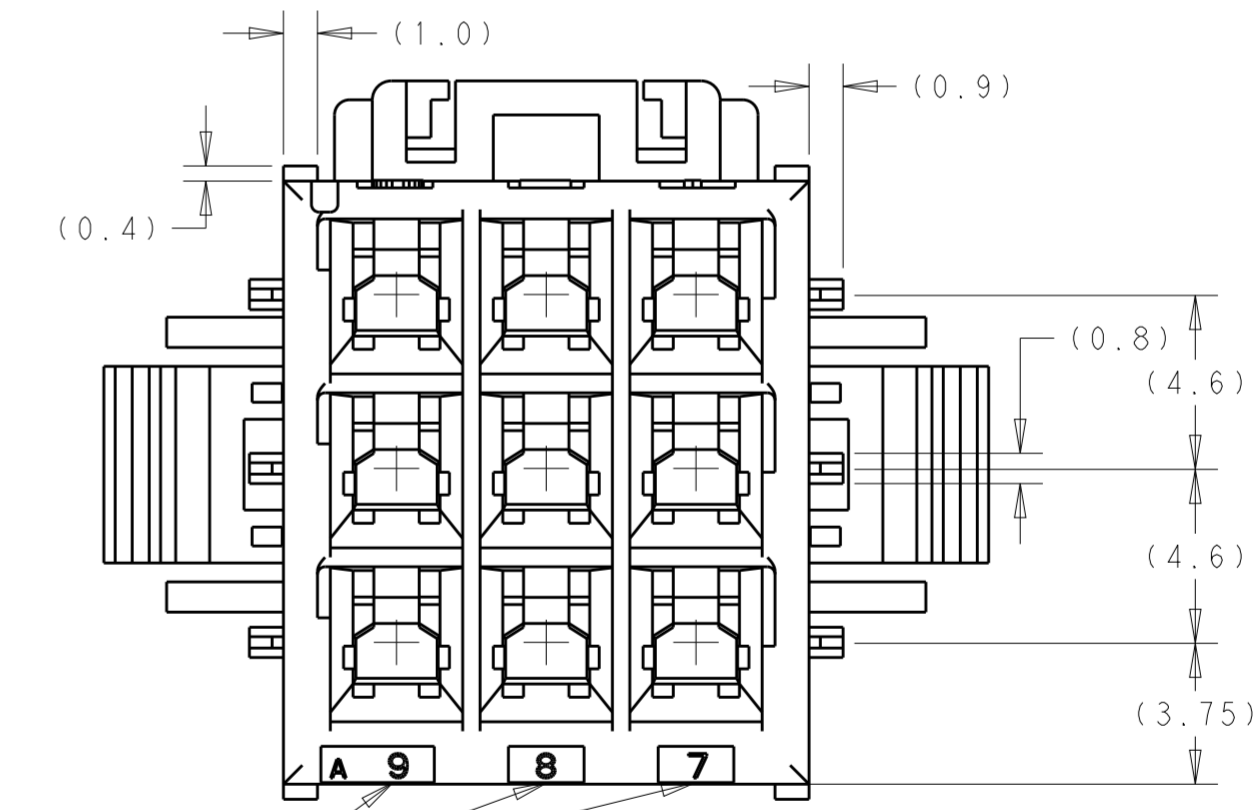


CIRCUIT NO.

- THIS HOUSING ACCEPTS TAB TERMINAL:  
TAB CONTACT: 177917-□ (#20-#16AWG)  
177916-□ (#26-#22AWG)
- MATING CONN. P/N  
PLUG HSG: □-177903-□ (#20-#16AWG)  
REC CONTACT: 177915-□ (#20-#16AWG)  
177914-□ (#26-#22AWG)
- APPLICABLE PLATE P/N: 177919-□
- INSTRUCTION SHEET: 411-5638
- APPLICABLE PANEL THICKNESS: 0.8~2.0(SEE FIG 1)
- INSERT CONN. FROM PRESS DIRECTION SIDE FOR METAL PANEL.
- EDGE OF THICKNESS WAY MUST NOT ROUND FOR MOLDED PANEL.
- ALL PARTS MEET RTI ELECTRICAL RATING OF 105°C ACCORDING TO UL 1977.
- MATERIAL: 6/6 NYLON UL94V-0
- PART 5-177911-1 COMPLY WITH GLOW WIRE REQUIREMENT FOR PARTS OF NON-METALLIC MATERIAL SUPPORTING A CURRENT-CARRYING CONNECTION DETAILED IN IEC 60335-1, SECTION 30(GWT)
- SEE TABLE 1
- GENERAL TOLERANCE:  
<10:±0.2  
10~30:±0.25,  
ANGLE:±3°



SECTION A-A



CIRCUIT NO.

9	NATURAL	5-177911-1
9	BLUE	177911-6
9	YELLOW	177911-4
9	NATURAL	177911-1
POS	COLOR	PART NUMBER

TABLE 1

TRADE MARK	MANUFACTURING PLACE
-AMP OR AMP	JAPAN
-+AMP OR AMP	CHINA
+AMP OR AMP	KOREA

THIS DRAWING IS A CONTROLLED DOCUMENT.

DWN: M. SUZUKI 09SEPT1993  
 CHK: M. SHINDO 09SEPT1993  
 APVD: Y. KASHIWA 09SEPT1993

PRODUCT SPEC: 108-5410  
 APPLICATION SPEC: 114-5175  
 WEIGHT: -

MATERIAL: 9

TE Connectivity  
 AMP POWER DBL LOCK CONN, 3.96mm PITCH (TRIPLE ROW) 9 Pos CAP HOUSING (PANEL MOUNT)

SIZE: A2 CAGE CODE: 00779 DRAWING NO: C-177911 RESTRICTED TO: -  
 SCALE: 5:1 SHEET: 1 OF 1 REV: D