

## Type CT15 Series

### Key Features

**Robust enclosed construction**

**Spindle adjust versions**

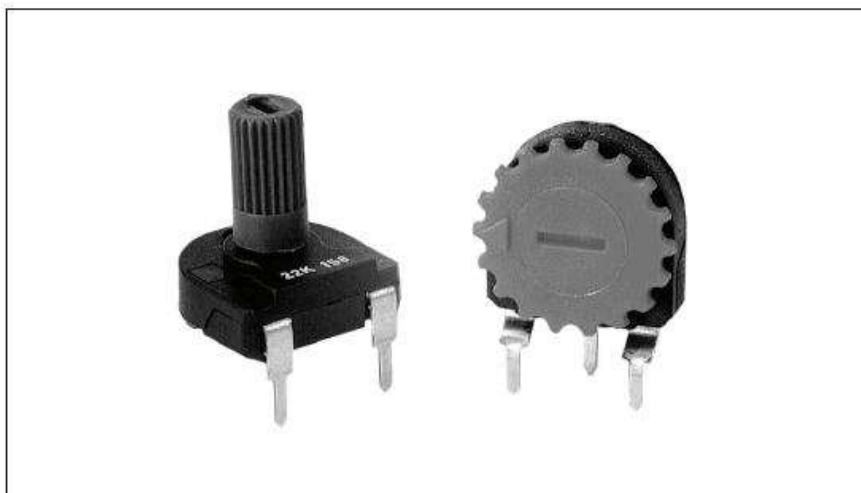
**Flame retardant**

**Arrow position indicator**

**Top, bottom, and side adjustment**

**Stable in high humidity**

**Edgewise operation style**



Low price, versatility and stable environmental characteristics are important benefits of this product. Featuring an innovative carbon resistive element printed on film in a fully enclosed package, this potentiometer style is normally chosen for a wide range of applications in industrial, professional and consumer equipment.

### Characteristics – Electrical

Resistance Range:	100R to 4M7 linear 1K to 2M2 non-linear
Resistance values:	1, 2.2 and 4.7 in each decade
Resistance Tolerance:	±20% (±30% above 1 Megohms)
Power Rating @ 40°C:	0.25 Watt Linear 0.12 Watt Non Linear
Maximum Voltage:	300V DC Linear 200V DC Non Linear
Rotational Noise (CRV):	<5% of Rn nominal
Temperature Coefficient:	<100 K ±500ppm ≥100 K ±1000ppm
Resolution:	Essentially Infinite
Electrical Adjustment:	250° ±20°

### Characteristics - Mechanical

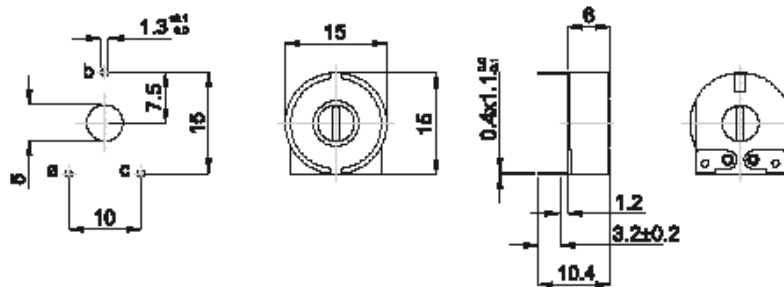
End Torque:	100 mNm minimum
Starting Torque:	4 to 25 mNm
Mechanical Adjustment:	265° ±5°
Weight:	1.3 grams

## Characteristics – Environmental

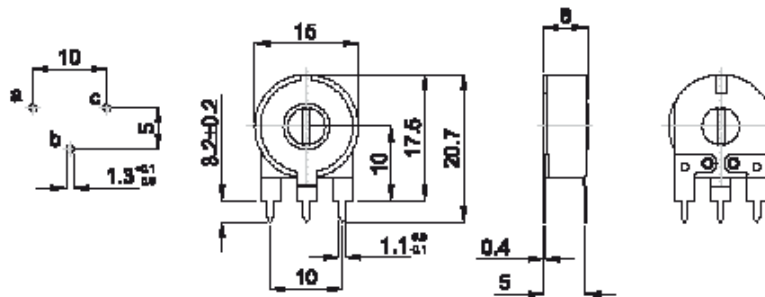
Temperature Range:	-25°C to +70°C
Rotational Life:	10,000 cycles
Load Life at 40°C:	$\Delta R < 10\%$ after 1000 hours
Sealing:	Dust and Splash Proof
Climate Category:	IEC 293-1 Category 25/70/21

## Dimensions

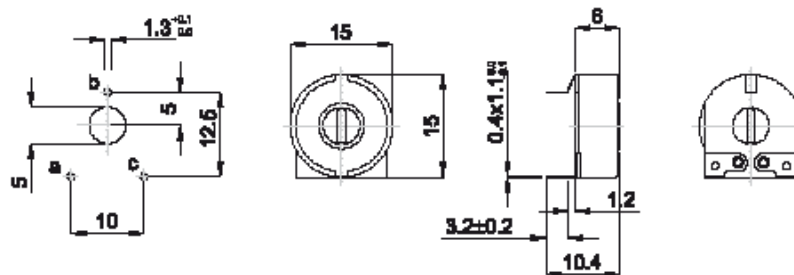
CT15-V15



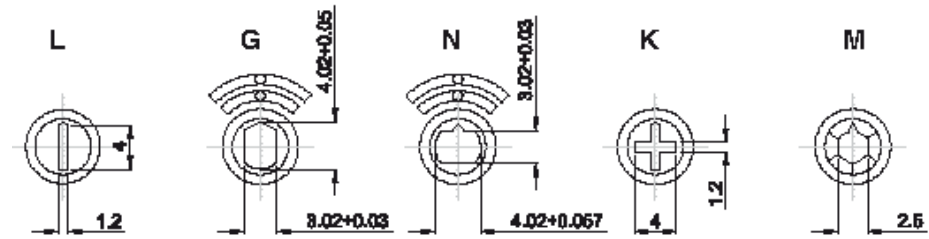
CT15-H5



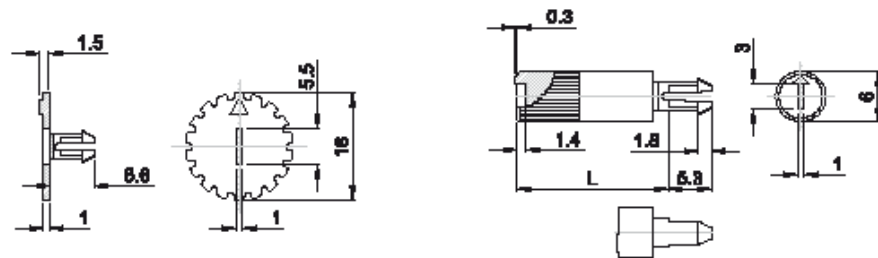
CT15-V12



### Adjustment Styles



### Plug in Spindles / Edgewheels



Colour	Part Number	Spindle Length (L) mm	White	Black	Red
White	CB155147	13.1	CB155137	CB155378	CB155379
Black	CB155388	17.5	CB155577	CB155241	CB155452
Red	CB155391	19.5	CB155242	CB155382	CB155385
Blue	CB155390	24.3	CB155600	CB155243	CB155492
Green	CB155392	26.3	CB155499	CB155244	CB155475
Yellow	CB155389	28.5	CB155578	CB155245	CB155770
		34.0	CB155450	CB155246	CB155491

### How To Order

Common Part	Adjustment Style	Orientation / Pin Pitch	Resistance Value	Tolerance
CT15 – 15mm Carbon Trimmer	K – Cross Slot L – Arrow Head M – Hex Centre N – Plug In G – Plug In 90°	H5 – 5.0mm V12 – 12.5mm V15 – 15.0mm	The first two digits are significant figures of resistance value. The third digit denotes the number of zeros following. Eg. 100R – 101 1K0 – 102 10K – 103 100K – 104	K – 10% (special) M – 20% N – 30% (>1MΩ)