

REVISIONS				
P.	LTN	DESCRIPTION	DATE	APVD
B		REVISED PER ECR-20-100642	23SEP2022	M, G, D, Z

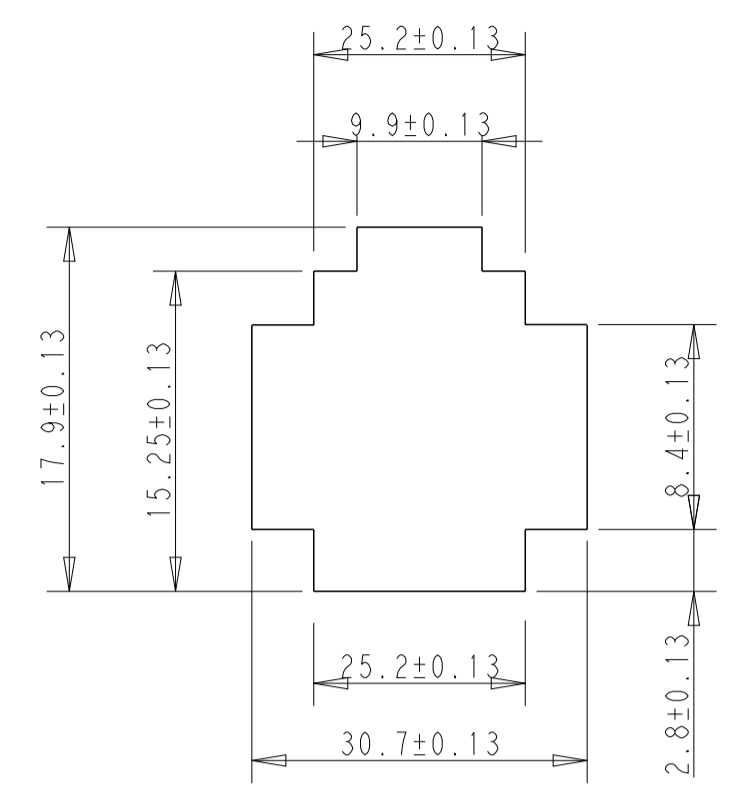
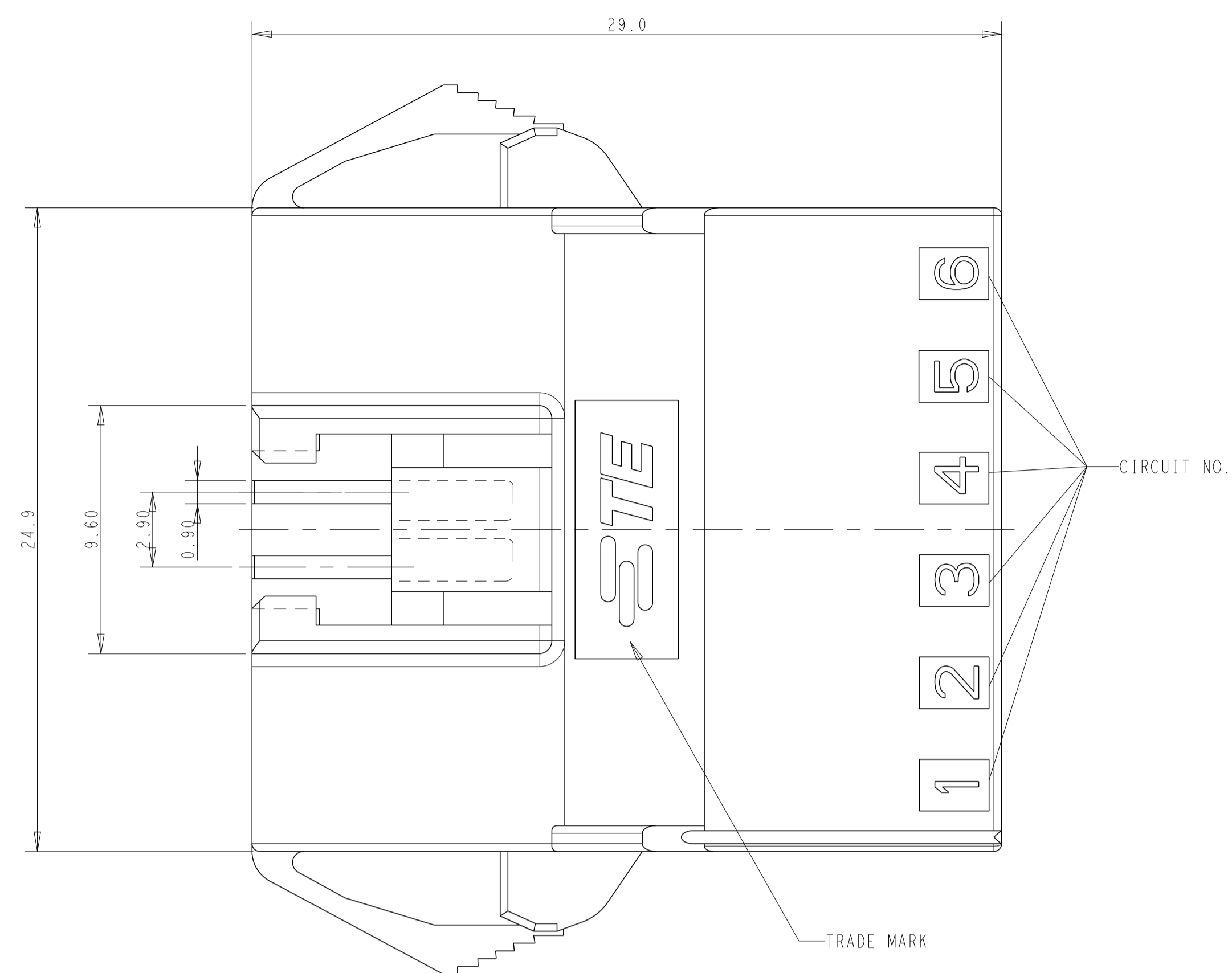
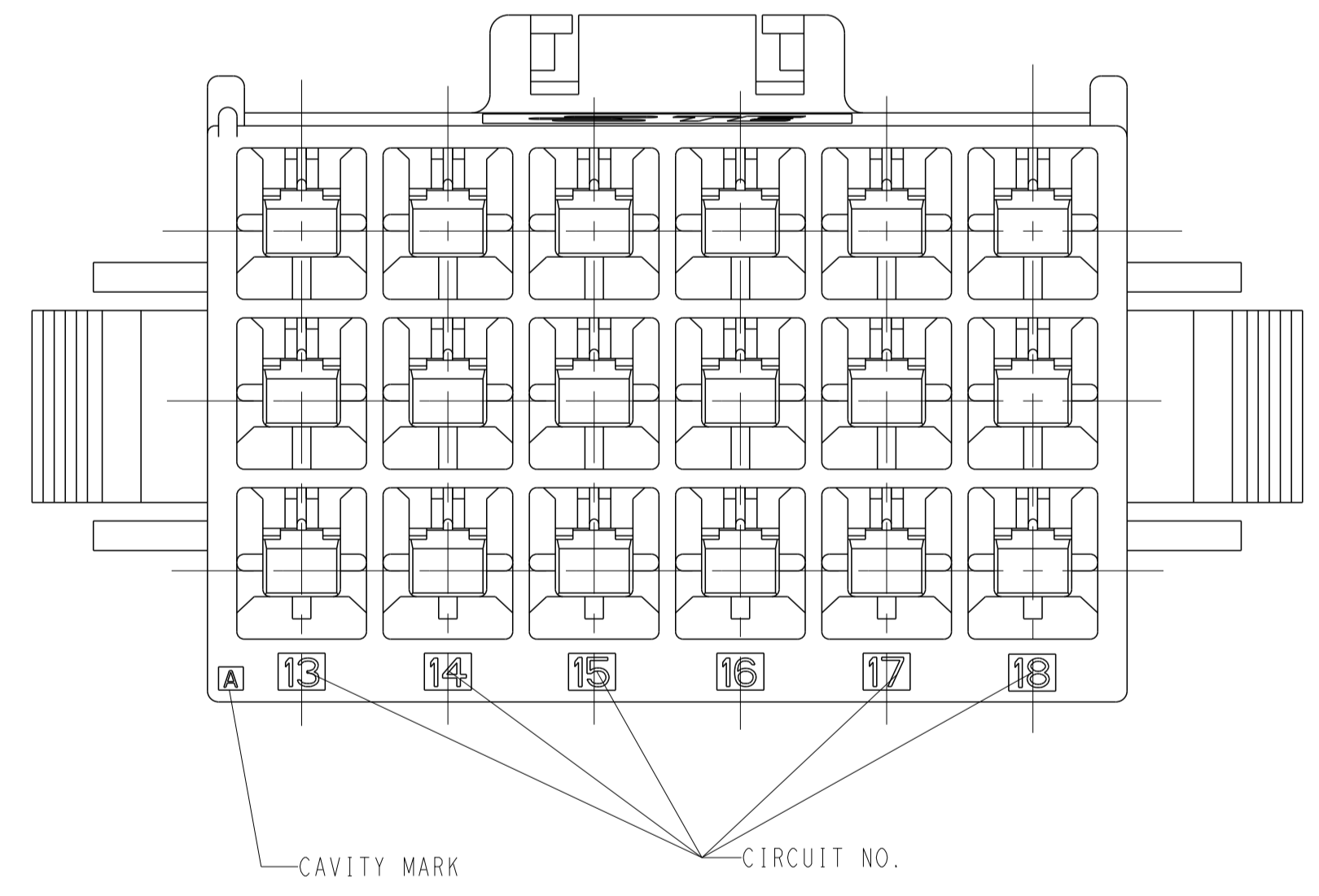
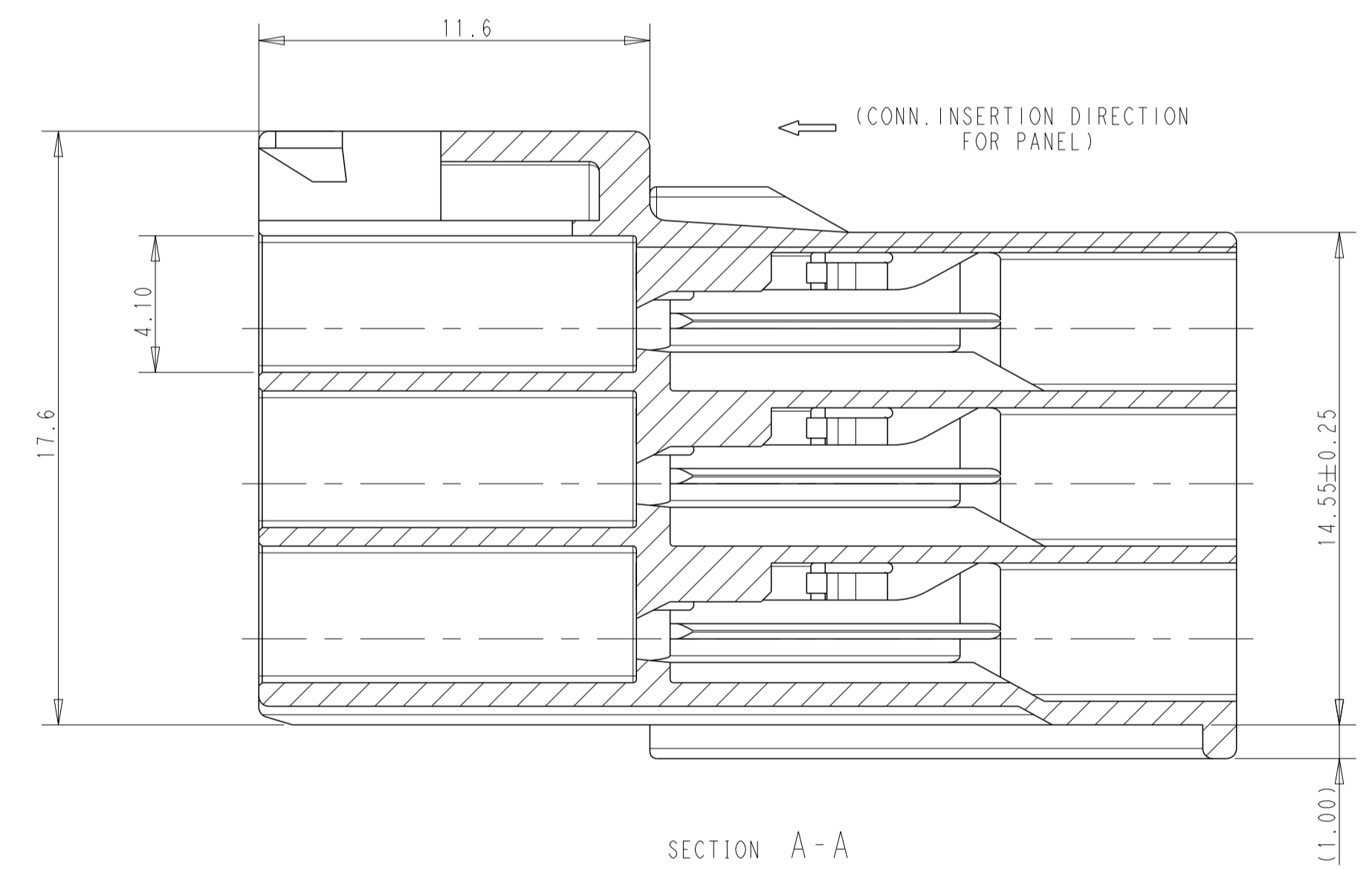
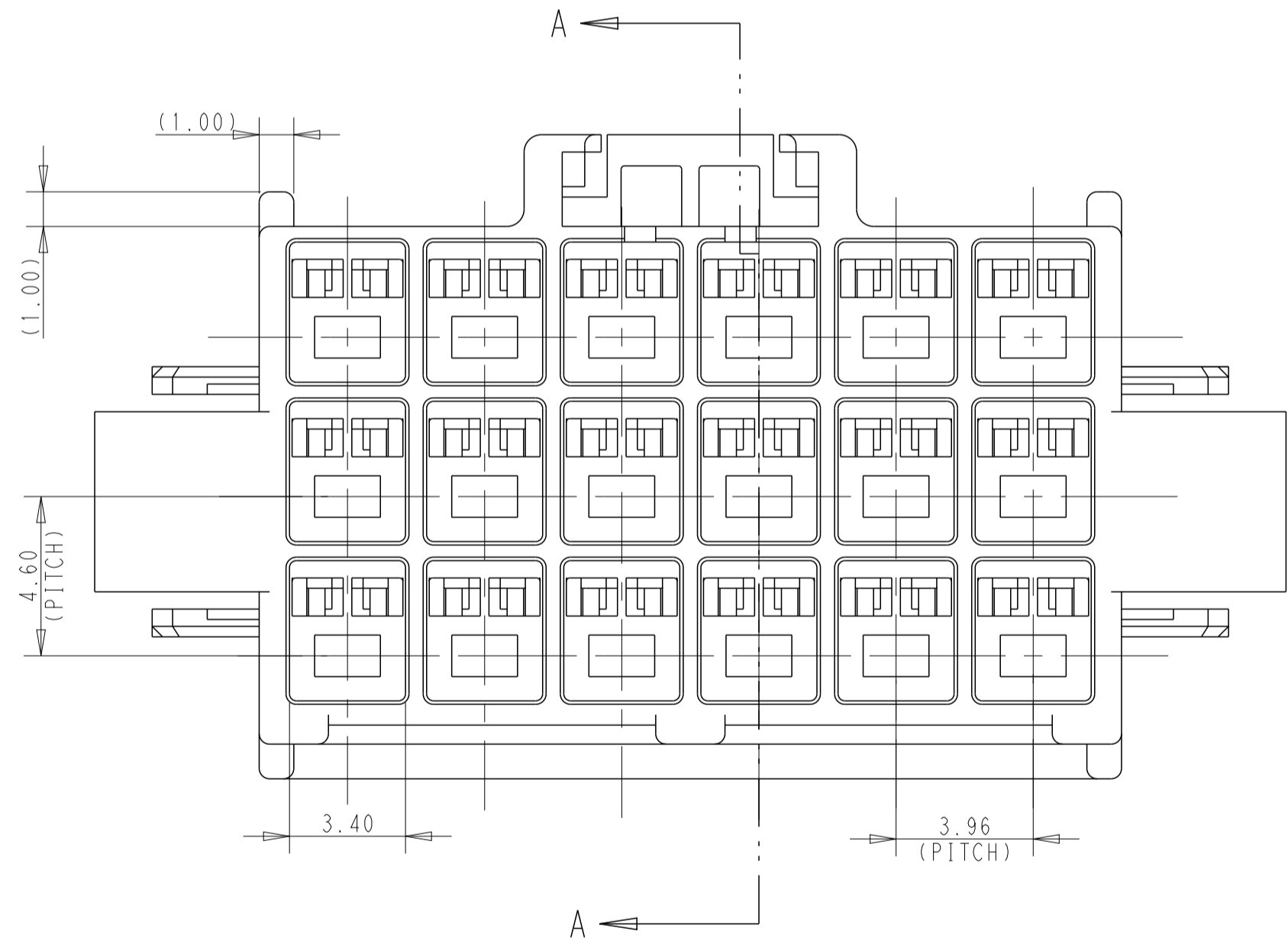


FIG 1  
(RECOMMENDED PANEL OPENING DIMENSION)



- NOTES:
- 1 APPLICABLE CONTACT P/N:  
TAB CONTACT: 175150-□ (20-16 AWG)  
175149-□ (26-22 AWG)
  - 2 MATING CONN. P/N:  
PLUG HSG: 176280-□  
REC CONTACT: 175152-□ (20-16AWG)  
175151-□ (20-22AWG)
  - 3 INSTRUCTION SHEET: IS-503J.
  - 4 APPLICABLE PANEL THICKNESS, 0.8-2.0 (SEE FIGURE 1)
  - 5 INSERT CONN. FROM PRESS DIRECTION SIDE FOR METAL PANEL
  - 6 EDGE OF THICKNESS WAY MUST NOT ROUND FOR MOLDED PANEL



DISCONTINUED	18	BLACK	176301-9
DISCONTINUED	18	BLUE	176301-6
DISCONTINUED	18	YELLOW	176301-4
DISCONTINUED	18	RED	176301-2
	18	NATURAL	176301-1
	POS.	COLOR	PART NUMBER

THIS DRAWING IS A CONTROLLED DOCUMENT.		DWN Y. NARISAWA 19NOV90	TE Connectivity
DIMENSIONS: mm		CHK Y. FUJITA 19NOV90	
TOLERANCES UNLESS OTHERWISE SPECIFIED:		APVD N. ONQUE 19NOV90	NAME AMP UNIVERSAL POWER CONN 3.96 MM PITCH CAP HOUSING 18 POS (PANEL MOUNT)
0 PLC ±0.25		PRODUCT SPEC 108-5302	
1 PLC ±0.2		APPLICATION SPEC 114-5142	SIZE CAGE CODE DRAWING NO. RESTRICTED TO A   00779 C=176301
2 PLC ±0.2		WEIGHT	
3 PLC ±0.2		CUSTOMER DRAWING	SCALE 6:1 SHEET 1 OF 1 REV B
4 PLC ±0.2			
ANGLES ±°			
FINISH			
MATERIAL 6/6 NYLON (UL94 V-0)			