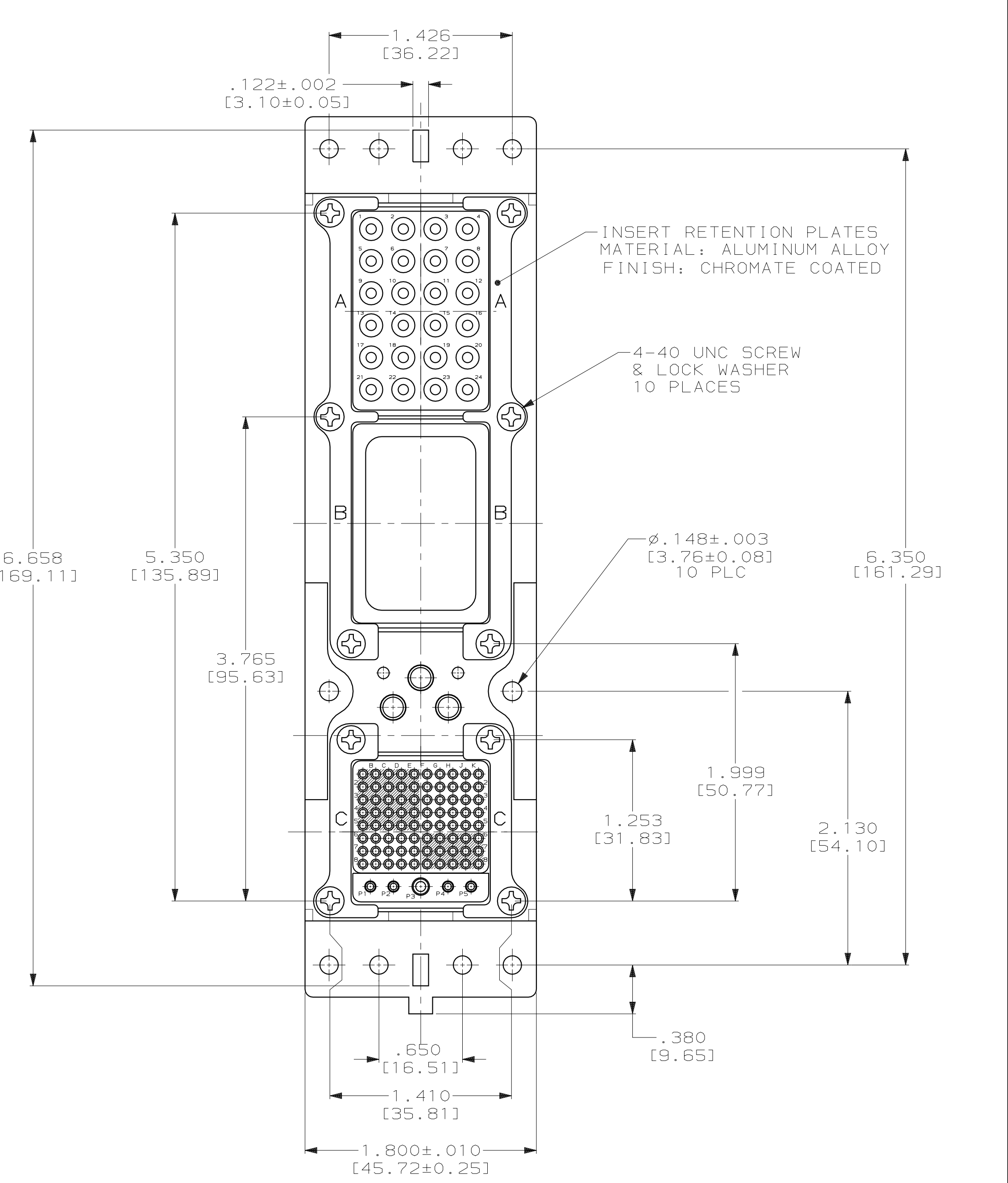
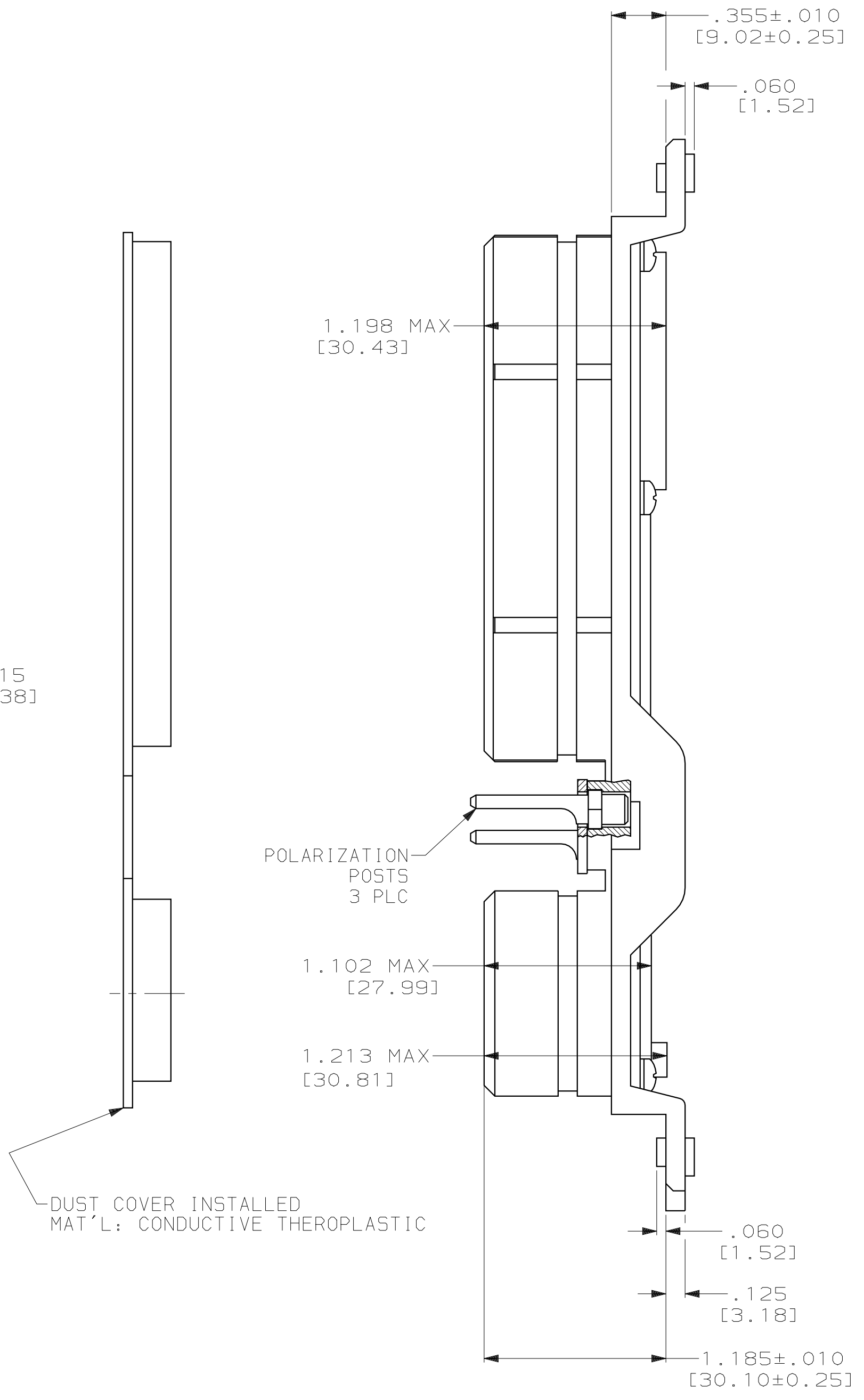
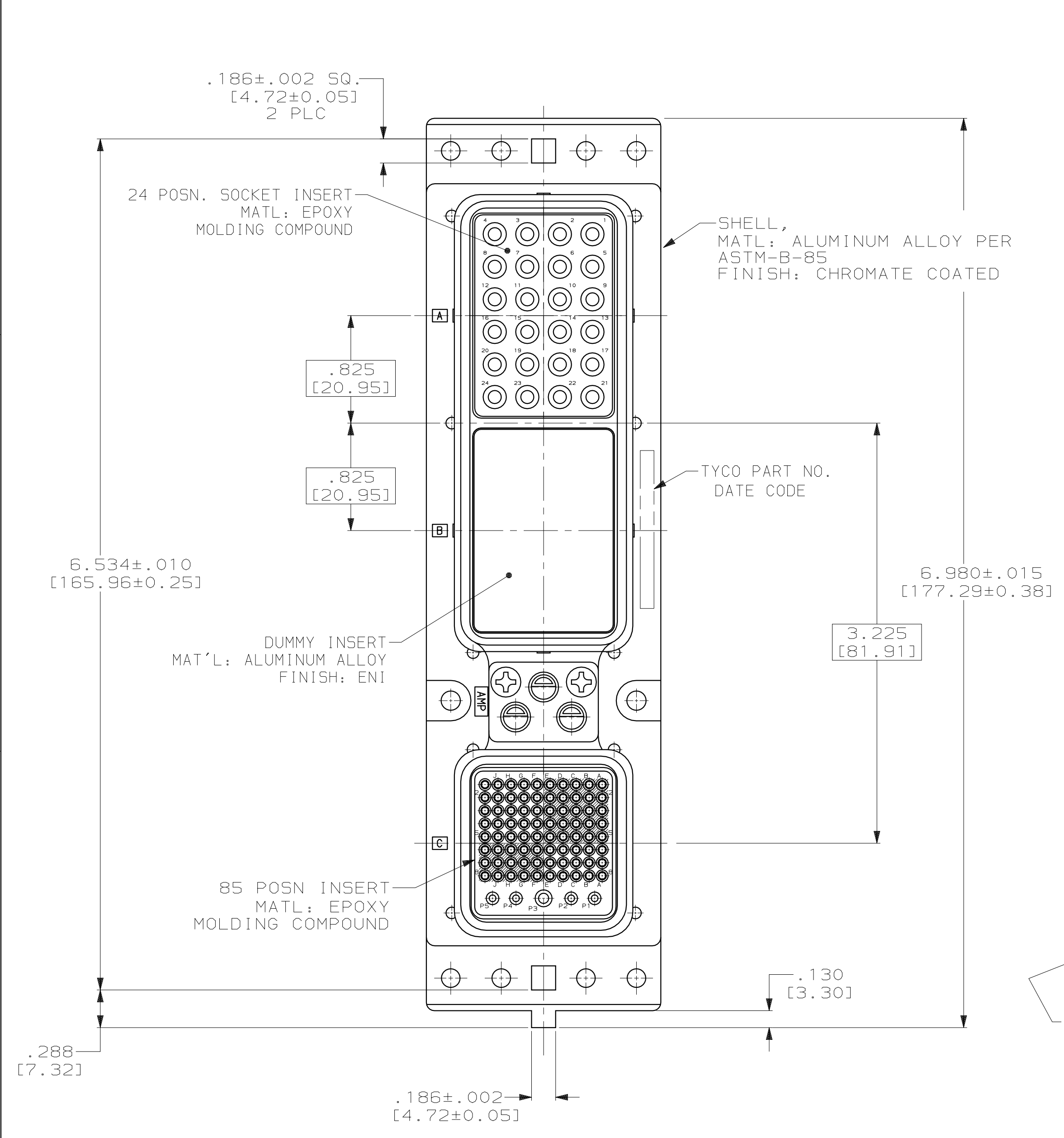


LOC	DIST	REV	DATE	BY	APPV
DF	AO	0	RELEASED	1-04	CT SG



- CONNECTOR DIMENSIONS ARE PER ARINC 600 SPECIFICATIONS UNLESS OTHERWISE SPECIFIED.
- POLARIZING POSTS SHOWN IN POSITION "01" FOR ILLUSTRATION ONLY. CONNECTORS SHIPPED WITH KEYING INSTALLED IN POSITION PER TABLE.

01	MODULE A: SIZE 12: 208273-2 (QTY=24) MODULE B: BLANK MODULE C: SIZE 22: 208262-3 (QTY=80) SIZE 20: 208267-2 (QTY=4) SIZE 16: 208270-2 (QTY=1)	1757004-1
KEYING POSITION	CONTACTS INCLUDED AND NOT INSTALLED	PART NUMBER

THIS DRAWING IS A CONTROLLED DOCUMENT.

DIMENSIONS: INCHES (mm)	TOLERANCES UNLESS OTHERWISE SPECIFIED:	DWN: C.C. THOMAS 12-13-01	tyco
0 PLC ±-	1 PLC ±-	CHK: S. GLATFELTER 12-13-01	TYCO Electronics Corporation
2 PLC ±-	3 PLC ±.005 (0.13)	APPV: S. GLATFELTER 12-13-01	Harrisburg, PA 17105-3608
4 PLC ±-	ANGLES ±-	PRODUCT SPEC	Electronics
MATERIAL: SEE CALLOUTS	FINISH: SEE CALLOUTS	APPLICATION SPEC	NAME: PLUG ASSY, SIZE 2, ARINC 600 (24/BLANK/85)
CUSTOMER DRAWING		WEIGHT: -	SIZE: A1
		CAGE CODE: 00779	DRAWING NO: 1757004
		RESTRICTED TO: -	SCALE: 1.5:1
		SHEET: 1 OF 1	REV: 0