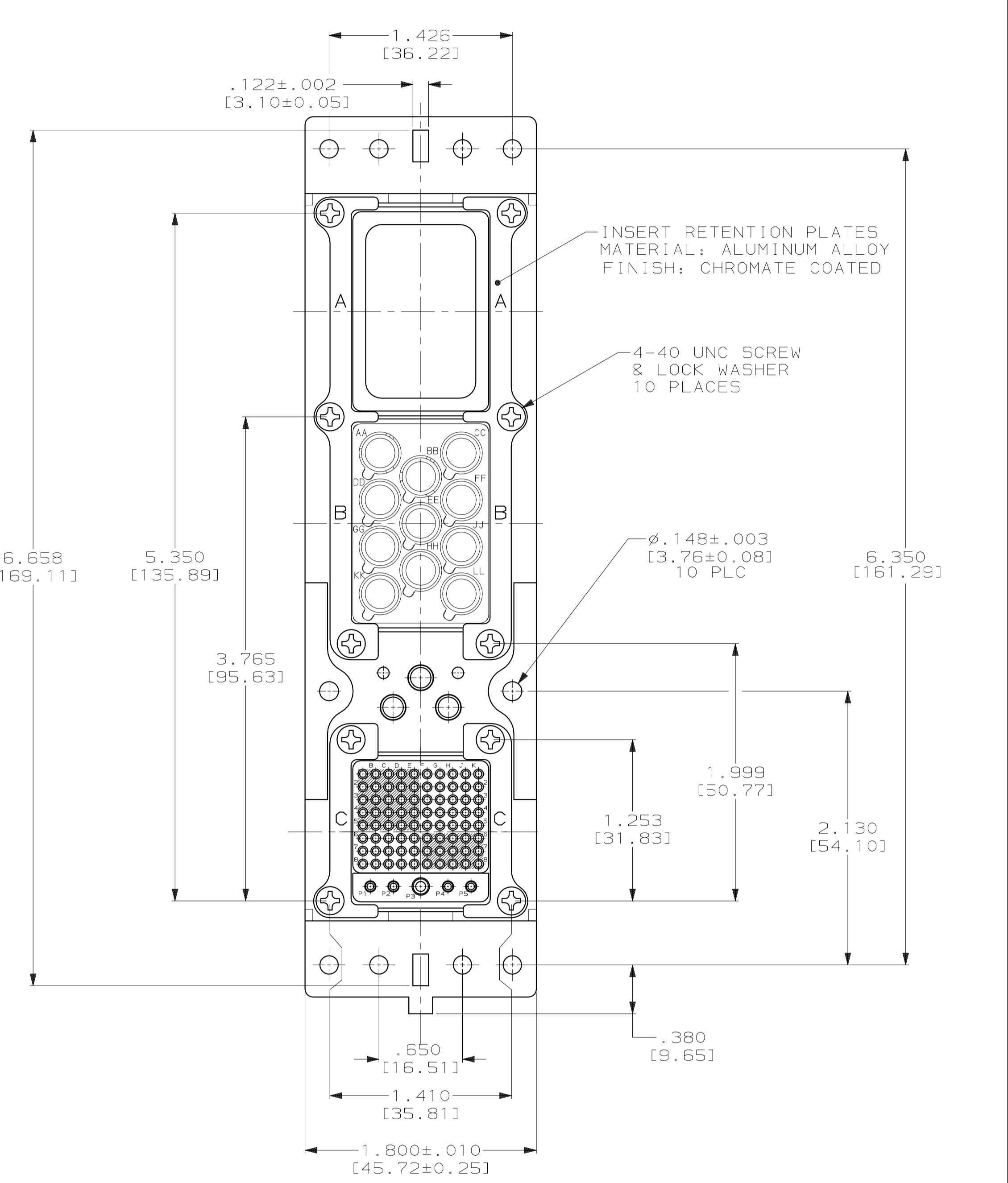
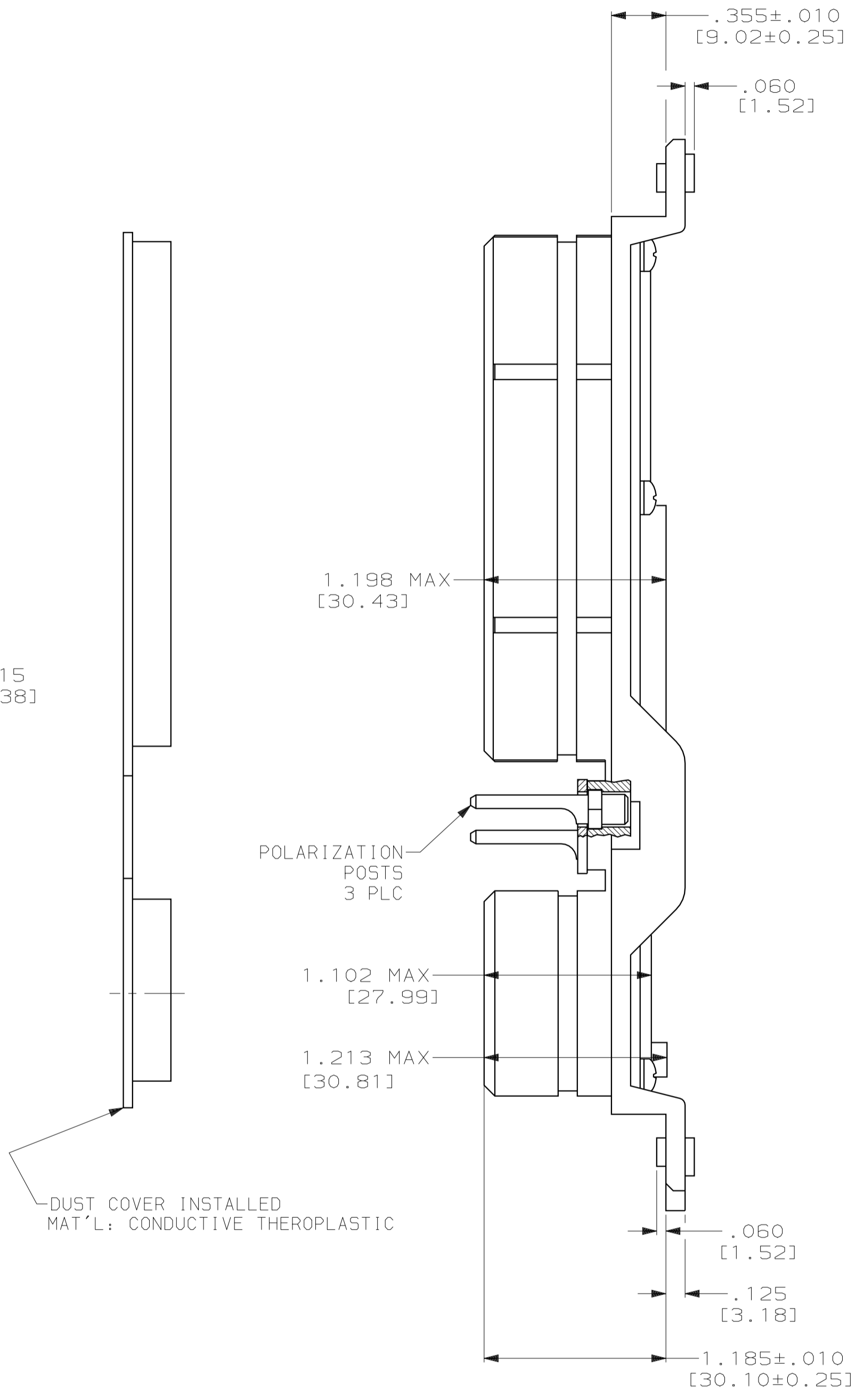
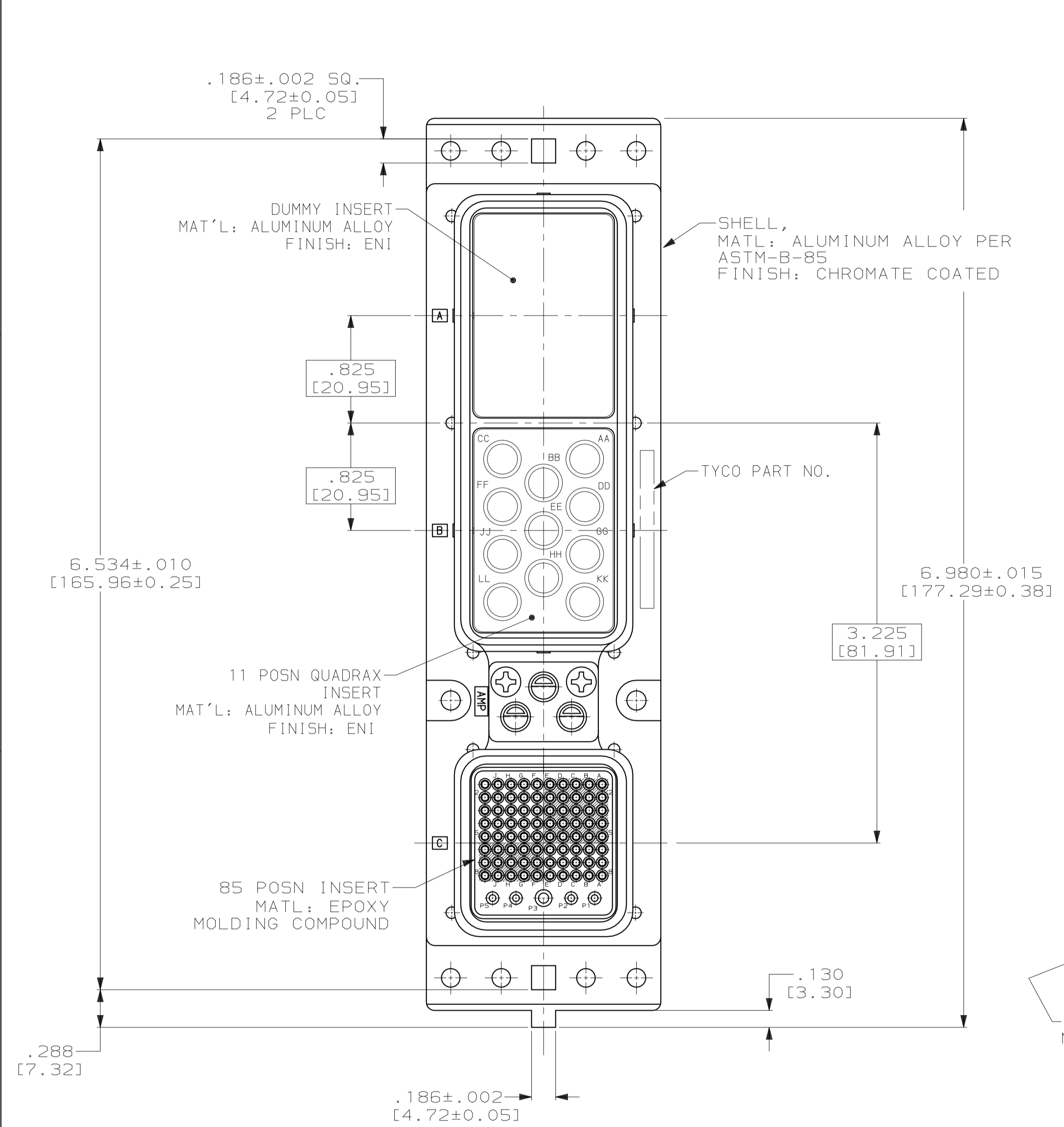


| LOC | DIST | REV | DATE | BY | CHK | APPV |
|-----|------|-----|---------|----|-----|------|
| DF | AO | A | 9-27-04 | CT | | KH |



- CONNECTOR DIMENSIONS ARE PER ARINC 600 SPECIFICATIONS UNLESS OTHERWISE SPECIFIED.
- POLARIZING POSTS SHOWN IN POSITION "01" FOR ILLUSTRATION ONLY. CONNECTORS SHIPPED WITH KEYING INSTALLED IN POSITION PER TABLE.

| KEYING POSITION | CONTACTS INCLUDED AND NOT INSTALLED | PART NUMBER |
|-----------------|---|-------------|
| 51 | MODULE B SIZE 8 QUADRAX 1445693-1 (QTY=10) FILLER PLUGS (QTY=1) | 1757003-2 |
| 01 | MODULE B SIZE 8 QUADRAX 1445693-1 (QTY=4) FILLER PLUGS (QTY=7) | 1757003-1 |

THIS DRAWING IS A CONTROLLED DOCUMENT.

| | | | |
|------------------|---------------|---------------|--|
| DWNS | C. THOMAS | 12-13-01 | tyco TYCO Electronics Corporation Harrisburg, PA 17105-3608 |
| CHK | S. GLATFELTER | 12-13-01 | |
| APPV | S. GLATFELTER | 12-13-01 | Electronics NAME: PLUG ASSY, SIZE 2, ARINC 600 (BLANK/11Q11/85) |
| PRODUCT SPEC | | | |
| MATERIAL | SEE CALLOUTS | FINISH | SEE CALLOUTS |
| WEIGHT | | SIZE | A1 |
| CUSTOMER DRAWING | | CAGE CODE | 00779 |
| | | DRAWING NO | 1757003 |
| | | RESTRICTED TO | |
| | | SCALE | 1.5:1 |
| | | SHEET | 1 OF 1 |
| | | REV | A |