

THIS DRAWING IS UNPUBLISHED.

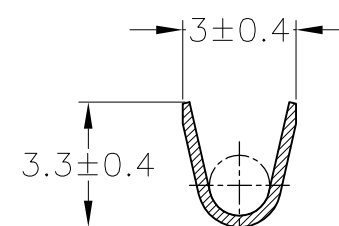
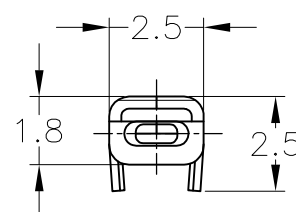
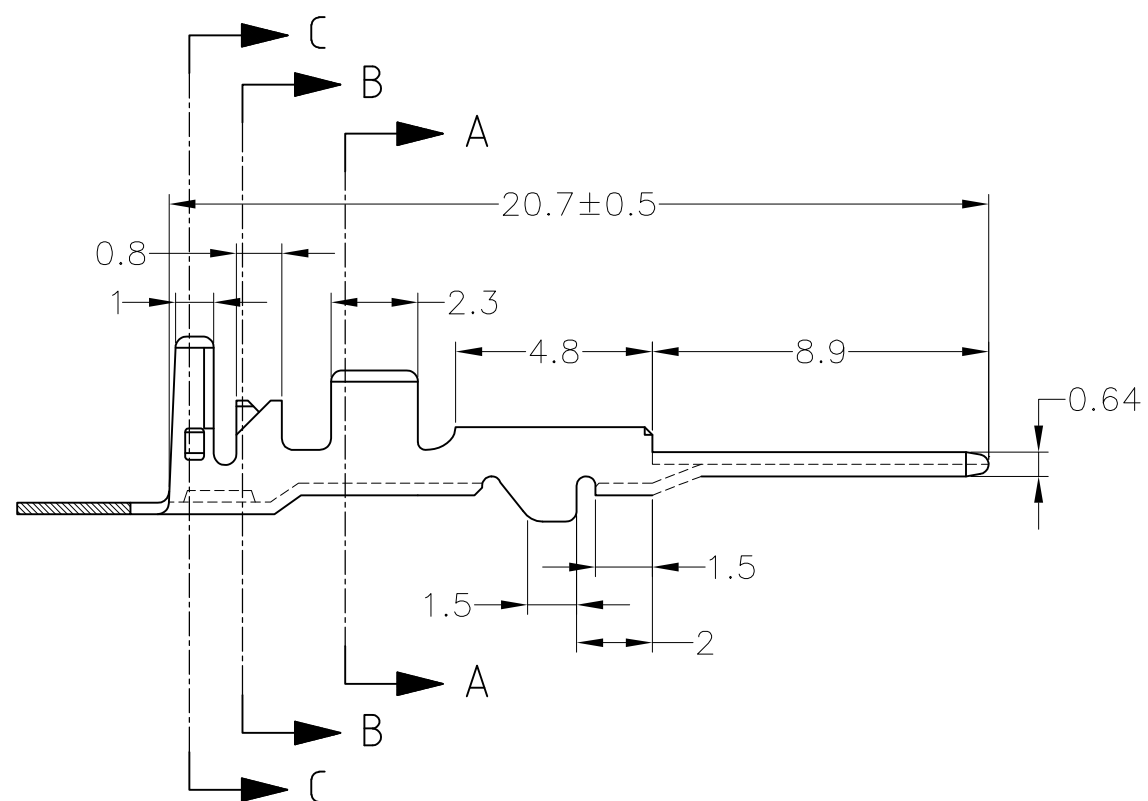
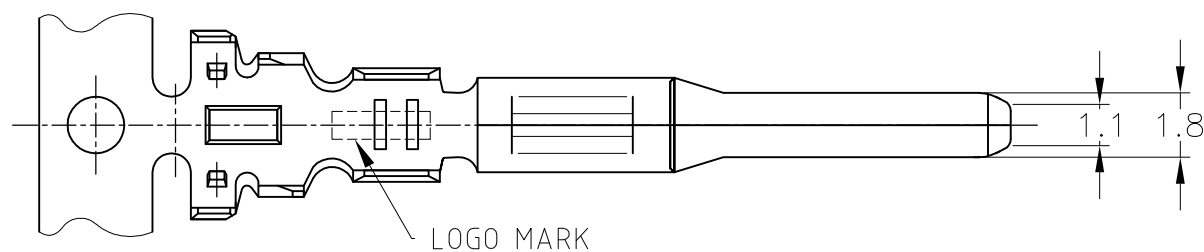
RELEASED FOR PUBLICATION

REVISIONS

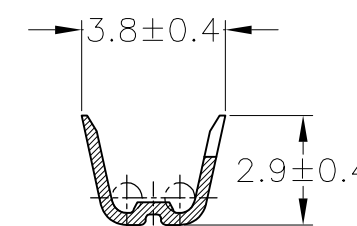
© COPYRIGHT - By Tyco Electronics JAPAN G.K.

ALL RIGHTS RESERVED.

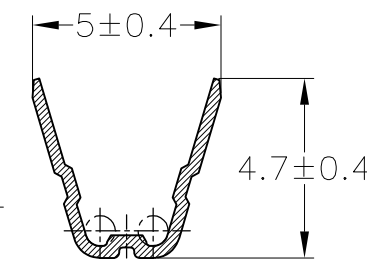
P	LTR	DESCRIPTION	DATE	DWN	APVD
	B	REVISED	26JAN2018	YN	TK



A-A



B-B



C-C

1. 嵌合相手端子型番 ; 175095 他

1. RECEPTACLE CONTACT ; 175095 etc

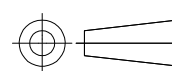
TOLERANCES UNLESS OTHERWISE SPECIFIED:
一般公差

10 ≥	: ±0.2
30 ≥ > 10	: ±0.25
100 ≥ > 30	: ±0.3
ANGLE : ±3°	

WIRE RANGE 0.5~1.25mm ² (AWG#20-#16)	INSULATION DIA. 1.2~2.2mmφ
-------------------------------------------------------	-------------------------------

THIS DRAWING IS A CONTROLLED DOCUMENT.

DIMENSIONS:
mm



MATERIAL
SEE TABLE

TOLERANCES UNLESS OTHERWISE SPECIFIED:

0 PLC	± -
1 PLC	± -
2 PLC	± -
3 PLC	± -
4 PLC	± -
ANGLES	± -

FINISH
SEE TABLE

DWN	T.SHINOHARA	15JUN2012
CHK	K.BETSUI	15JUN2012
APVD	K.BETSUI	15JUN2012
PRODUCT SPEC	-	
APPLICATION SPEC	-	
114-5157	-	
WEIGHT	0.3 g	-

錫めっき済み PRE-TINNED	黄銅 板厚0.32 BRASS t=0.32	175208-1
仕上げ FINISH	材料 MATERIAL	型番 PART NUMBER

STE TE Connectivity Ltd.

NAME 070 SERIES TAB CONTACT			
SIZE	CAGE CODE	DRAWING NO	RESTRICTED TO
A3	00779	C-175208	-
CUSTOMER DRAWING		SCALE 5:1	SHEET 1 OF 1
		REV B	