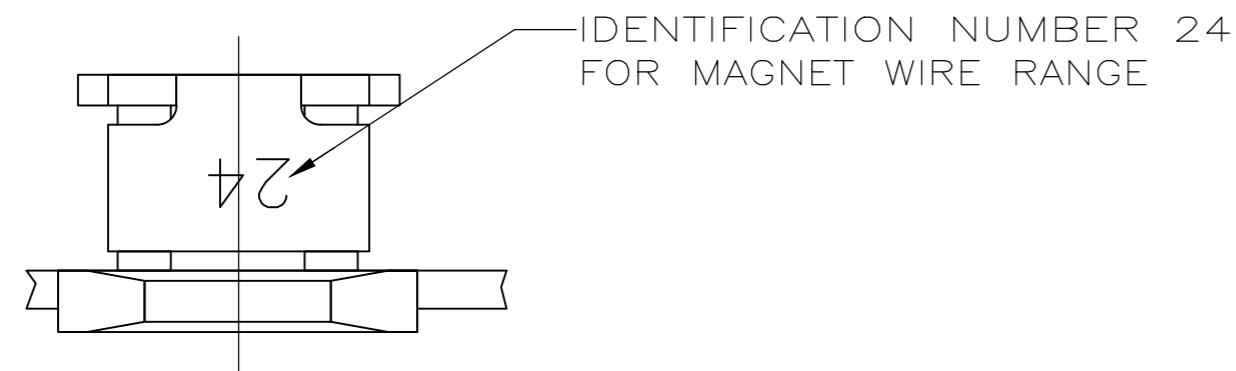
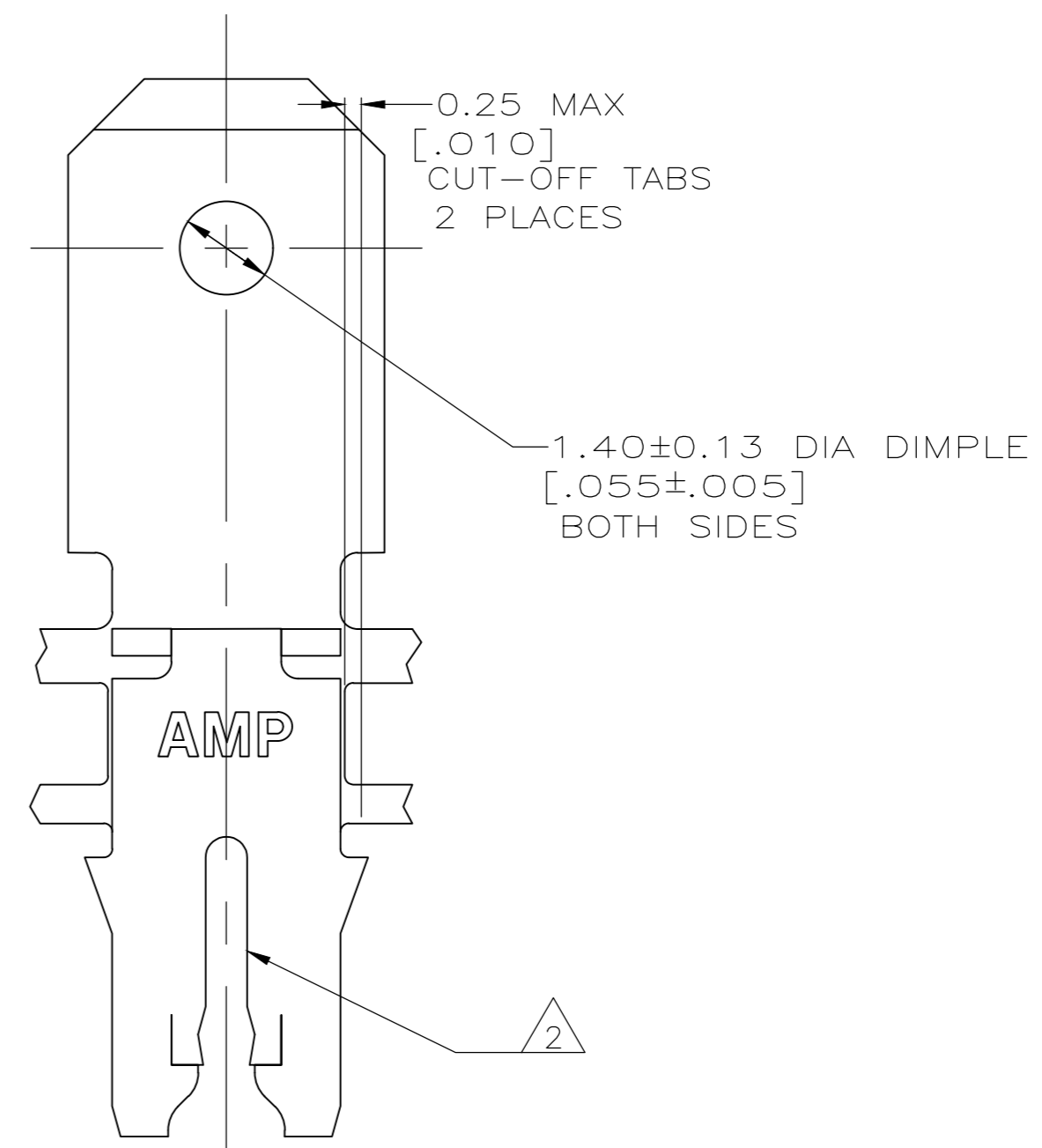
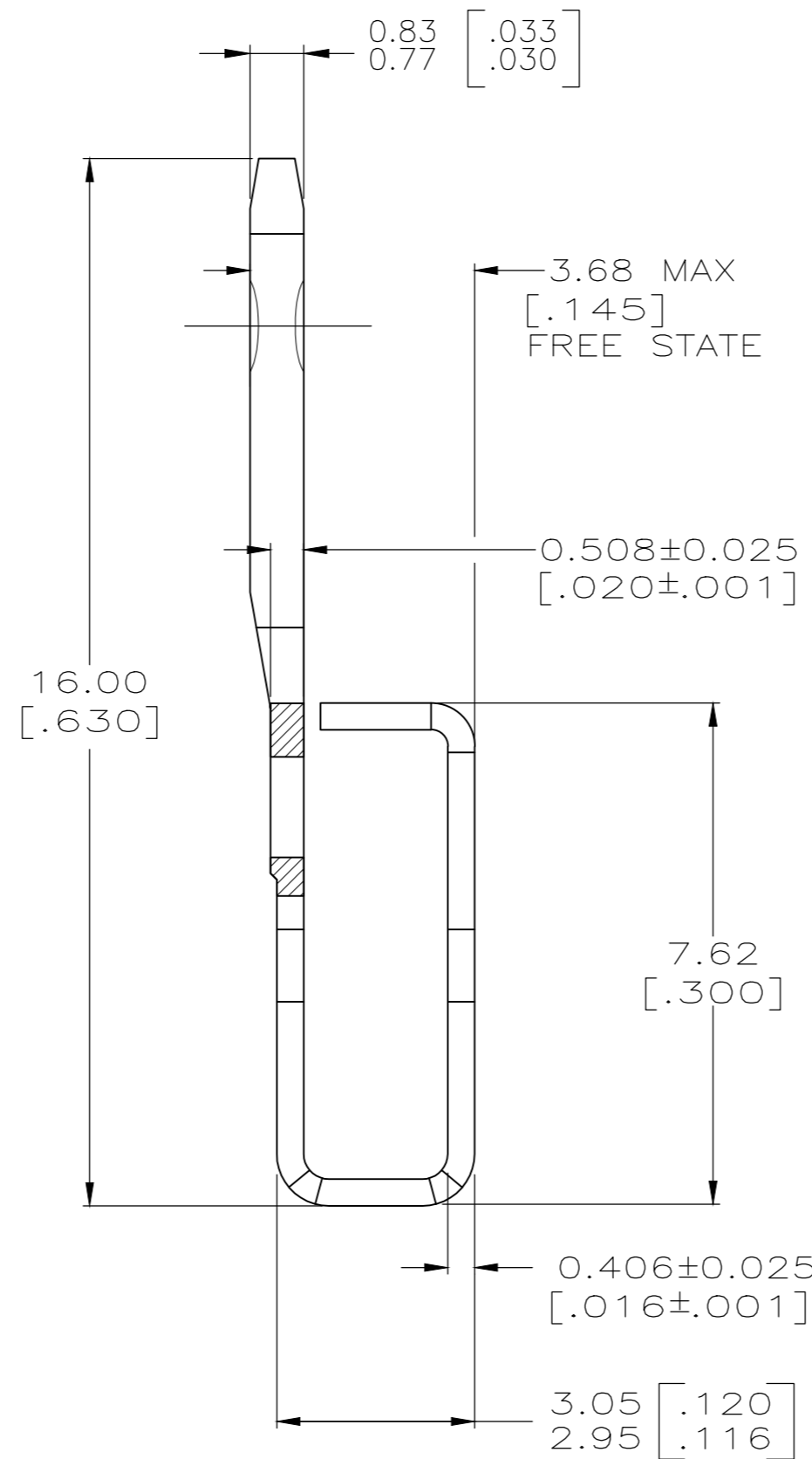
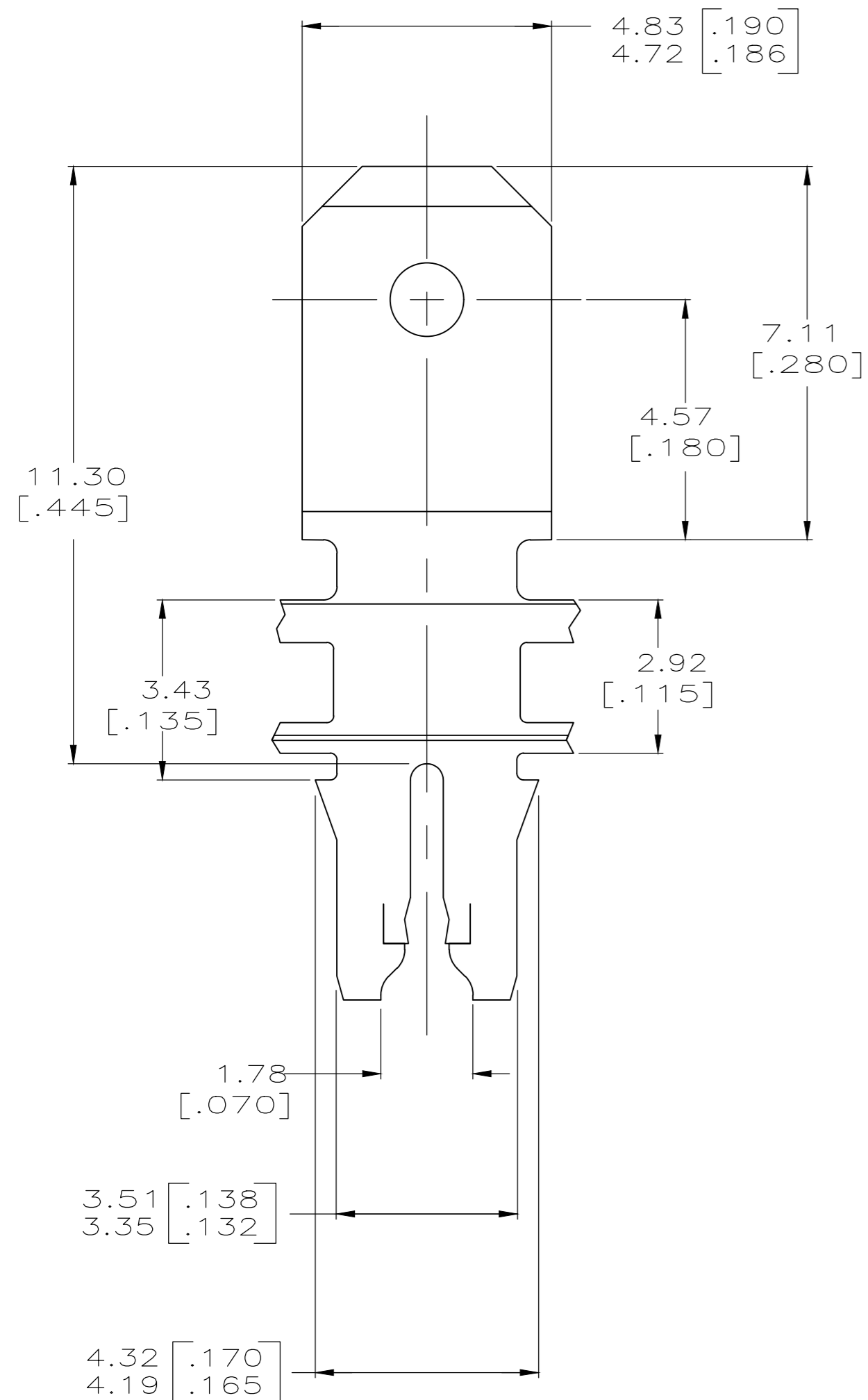


THIS DRAWING IS UNPUBLISHED. RELEASED FOR PUBLICATION
 © COPYRIGHT - By - ALL RIGHTS RESERVED.

LOC		DIST		REVISIONS			
P	LTR	DESCRIPTION		DATE	DWN	APVD	
AF	50	C		WIRE SIZE EXTENDED TO 16.5AWG	11NOV2019	JA	PKS



- 1 CONTINUOUS STRIP ON REELS WITH TERMINALS LOCATED ON 5.59±0.08 [.220±.003] CENTERS.
- 2 SLOT TERMINATES A SINGLE MAGNET WIRE ONLY. COPPER REANGE: 0.91-1.20mm [#19-#16.5] AWG. ALUMINUM RANGE: 0.95-1.20mm [#18.5-#16.5] AWG. ALUMINUM WIRE RANGE APPLIES FOR POST-TIN PLATED VERSIONS ONLY.
- 3 AFTER INSERTION INTO PLASTIC HOLDER TAB PORTION MUST BE BENT OVER 45° TO 90° OR POTTED-IN TO PREVENT PULL-OUT WHEN MATING RECEPTACLE IS DISCONNECTED.
- 4 PREPRODUCTION - FASR REQUIRED



1742035-1
PART NUMBER

THIS DRAWING IS A CONTROLLED DOCUMENT.		DWN	09DEC2003	TE Connectivity TERMINAL, TAB, 4.75[.187] FASTON,™ 300 SERIES MAG-MATE™				
DIMENSIONS:		CHK	09DEC2003			NAME		
mm [INCHES]		APVD	09DEC2003			PRODUCT SPEC		
TOLERANCES UNLESS OTHERWISE SPECIFIED:		KURT A. RANDOLPH				APPLICATION SPEC		
0 PLC	± -	KURT A. RANDOLPH		108-2012				
1 PLC	± -	KURT A. RANDOLPH		114-2046				
2 PLC	± 0.25[.010]	KURT A. RANDOLPH		114-2046				
3 PLC	± -	KURT A. RANDOLPH		114-2046				
4 PLC	± -	KURT A. RANDOLPH		114-2046				
ANGLES	± -	KURT A. RANDOLPH		114-2046				
MATERIAL		FINISH		WEIGHT	SIZE	CAGE CODE	DRAWING NO	RESTRICTED TO
0B2 PRE-MILLED BRASS		0.002032[.000080] MIN TIN PLATE		-	A2	00779	C=1742035	-
CUSTOMER DRAWING				SCALE	10:1	SHEET	1 of 1	REV
								C