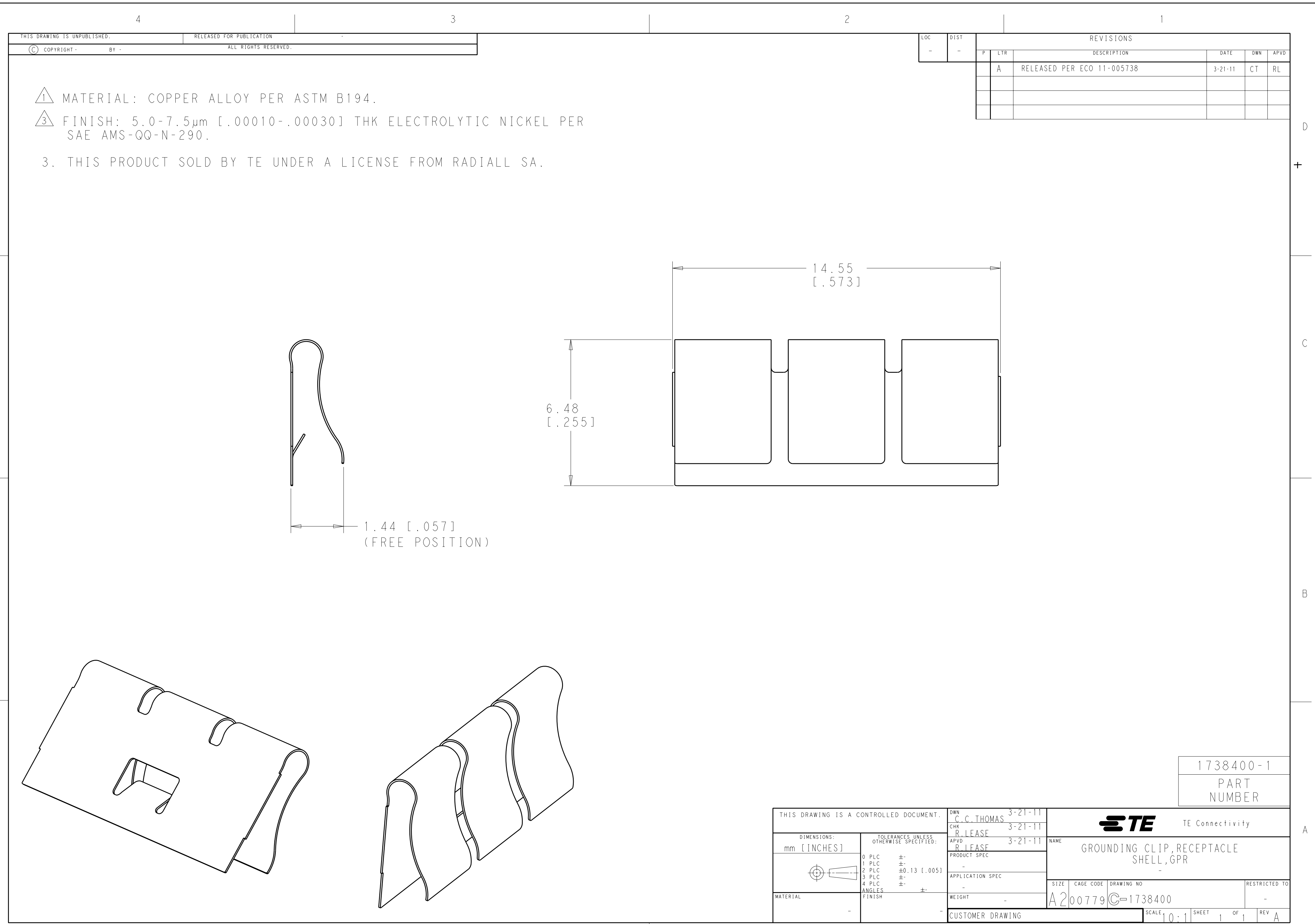


- ① MATERIAL: BERYLLIUM COPPER PER 100-45, TEMPER TD02, 0.080±0.015 THICK.
- ② HEAT TREAT: 2 HOURS AT 325°C; HARDNESS: 38 HRC MIN.
- ③ FINISH: 5.0-7.5µm THK ELECTROLYTIC NICKEL PER 112-25-2(MATTE) OR 112-25-3(SEMI-BRIGHT)
- 4. TRIM BURR 0.05 MAX.
- 5. SURFACE AREA: 350.2 mm²
VOLUME: 13.7 mm³
WEIGHT: .113 GRAM
- ⑥ KEY CHARACTERISTICS PER SOP 407-55



THIS DRAWING IS UNPUBLISHED. RELEASED FOR PUBLICATION
 © COPYRIGHT - BY - ALL RIGHTS RESERVED.

LOC	DIST	REVISIONS					
		P	LYR	DESCRIPTION	DATE	DWN	APVD
-	-	A		RELEASED PER ECO 11-005738	3-21-11	CT	RL

- ① MATERIAL: COPPER ALLOY PER ASTM B194.
- ③ FINISH: 5.0-7.5µm [.00010-.00030] THK ELECTROLYTIC NICKEL PER SAE AMS-QQ-N-290.
- 3. THIS PRODUCT SOLD BY TE UNDER A LICENSE FROM RADIAL SA.

THIS DRAWING IS A CONTROLLED DOCUMENT.		DWN C.C. THOMAS 3-21-11	1738400-1 PART NUMBER	
DIMENSIONS: mm [INCHES]		CHK R. LEASE 3-21-11	NAME GROUNDING CLIP, RECEPTACLE SHELL, GPR	
TOLERANCES UNLESS OTHERWISE SPECIFIED:		APVD R. LEASE 3-21-11	SIZE A200779	
0 PLC ±:	1 PLC ±:	PRODUCT SPEC	DRAWING NO 1738400	
2 PLC ±0.13 [.005]	3 PLC ±:	APPLICATION SPEC	RESTRICTED TO	
4 PLC ±:	ANGLES ±:	WEIGHT	SCALE: 10:1 SHEET 1 OF 1 REV A	
MATERIAL	FINISH	CUSTOMER DRAWING		