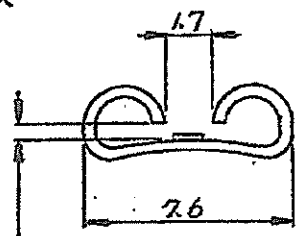
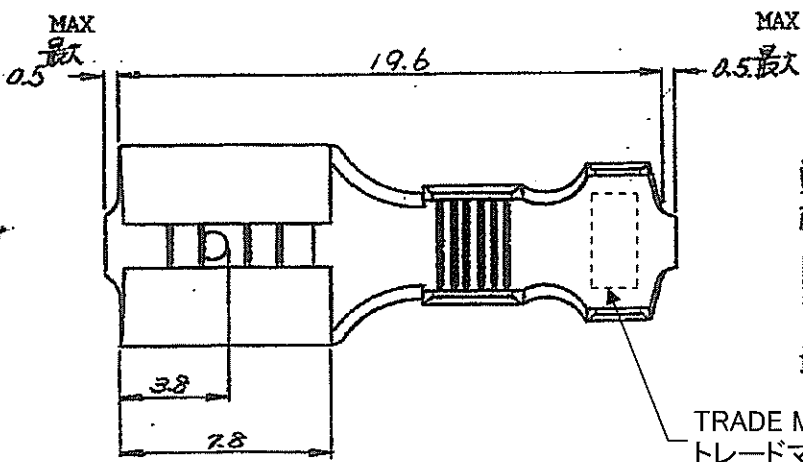
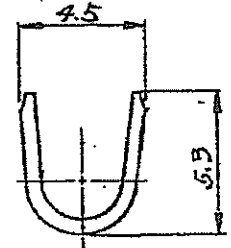
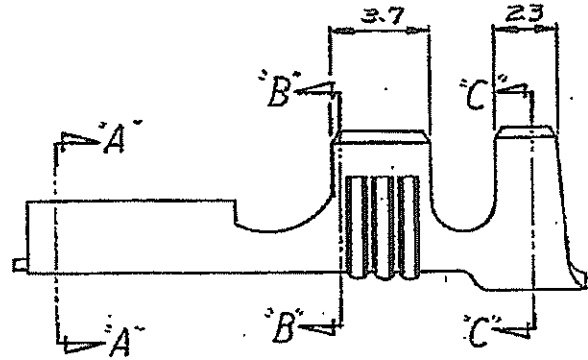


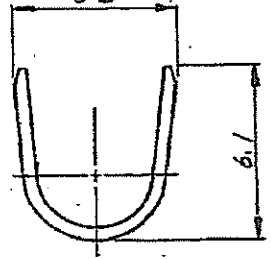
PART NUMBER: 170224



この寸法は嵌合力により管理する。
 BE CONTROLLED BY MATING FORCE
 断面A-A AND 0.71 MAX
 SECT



断面B-B
 SECT
 6.3



断面C-C

- NOTES:
- MATING TAB THK IS 0.84 - 0.76
 - PRODUCT SPEC 108-5006, APPLICATION SPEC 114-5023

注:

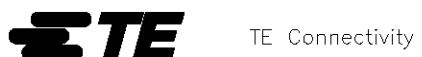
- 嵌合するプラグの詳細についてはCP63-048Jの図面参照の事
- 製品規格番号 108-5006, 圧着規格番号 114-5023.
- 複数の電線組合せ可能(参考).
 最小の組合せ(2本圧着): $0.5\text{mm}^2 + 1.25\text{mm}^2$ (7ヤレンジ最小)
 最大の組合せ(3本圧着): $0.5\text{mm}^2 + 0.5\text{mm}^2 + 1.3\text{mm}^2$ (被覆外径最高)

- 3 PLURAL WIRE CRIMPING(REF)
 MIN. CONDITION(2 WIRES): $0.5\text{mm}^2 + 1.25\text{mm}^2$ (MIN. WIRE RANGE)
 MAX. CONDITION(3 WIRES): $0.5\text{mm}^2 + 0.5\text{mm}^2 + 1.3\text{mm}^2$ (MAX. INS DIA RANGE)

170224-2	黄銅	0.45	錫めっき
170224-1	黄銅	0.45	
連鎖状型番	枚数	板厚	仕上
(P/W STRIP)	(MATERIAL)		

参考図面 (CUSTOMER COPY) (REFERENCE ONLY)

P/N (MATERIAL) 参照 SEE TABLE P/L (FINISH) 参照 SEE TABLE WIRE RANGE (WIRE RANGE) 1.75~5.27 mm (AWG)	CLASS: FASTON FASTON
INSULATION DIA. 3.0~5.0 mm (IN)	TYPE: オートマチック AUTOMATIC



DIMENSIONS IN MM. DO NOT SCALE PRINT
 単位: 尺
 PRINT DIST

B2	REVISED PER ECR-20-009164	MK	DH	6AUG2020
B1	REVISED PER ECO-11-005030	RK	HMR	24MAR11

LTR	変更 (REVISION RECORD)	DR	CHK	DATE
-----	----------------------	----	-----	------

DR: M. Yuzawa 4/16/76
 DE: M. Nishida 4/16/76
 CHK: M. Arahata 4/15/76
 APP: Y. Sato 4/16/76

TOLERANCE ±0.4 (MAX) EXCEPT AS NOTED ±1.0°	SCALE: 4-1 LOC: J SIZE: A NO: C-170224	REV: B2
P/N (NAME) "250" SERIES FASTON RECEPTACLE 250 シ-ズ-ファストン-レセプタクル		