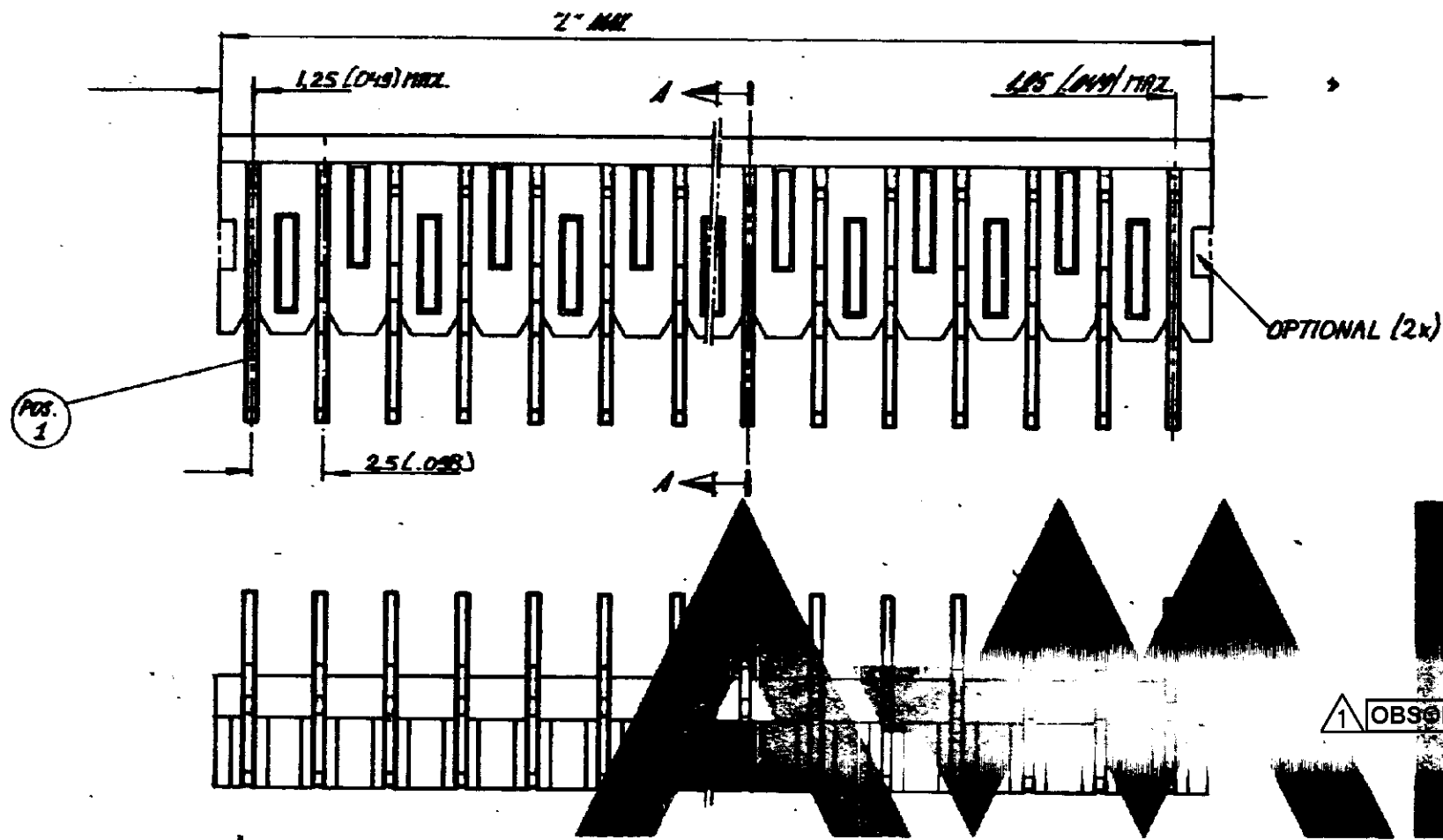


DRAWING MADE IN AMERICAN PROJECTION

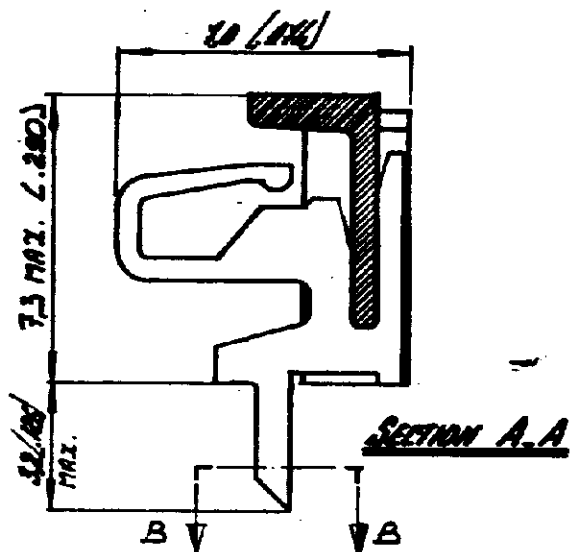
| REVISIONS | | | | |
|-----------|---------------------------|---------|-----|------|
| LTR | DESCRIPTION | DATE | DWN | APVD |
| E1 | REVISED PER ECO-09-025273 | 17NOV09 | KK | AEG |



| ORDER NUMBER | NUMBER OF POSITIONS | 2" MAX | |
|--------------|---------------------|--------|-------|
| | | MM | INCH |
| 164897-2 | 2 | 5.0 | .197 |
| 3 | 3 | 7.5 | .295 |
| 4 | 4 | 10.0 | .394 |
| 5 | 5 | 12.5 | .492 |
| 6 | 6 | 15.0 | .591 |
| 7 | 7 | 17.5 | .689 |
| 8 | 8 | 20.0 | .787 |
| 9 | 9 | 22.5 | .886 |
| L-0 | 10 | 25.0 | .984 |
| L-1 | 11 | 27.5 | 1.083 |
| L-2 | 12 | 30.0 | 1.181 |
| 3 | 13 | 32.5 | 1.280 |
| 4 | 14 | 35.0 | 1.378 |
| L-5 | 15 | 37.5 | 1.476 |
| L-6 | 16 | 40.0 | 1.575 |
| L-7 | 17 | 42.5 | 1.673 |
| L-8 | 18 | 45.0 | 1.772 |
| L-9 | 19 | 47.5 | 1.870 |
| L-10 | 20 | 50.0 | 1.969 |

⚠ OBSOLETE

MATERIAL: HOUSING: P.C., 90% GLASS FILLED.
 CONTACT: BRASS.
 PLATING: TIN-LEAD 93/7 OVER NICKEL BARRIER



⚠ OBSOLETE PARTS; OBSOLETE CIS STREAMLINING PER D.RENAUD/D.SINISI

| | | |
|--|---|--------------|
| SEE TABLE. | SEE ABOVE. | SEE ABOVE. |
| ORDER NO. | MATERIAL | PLATING |
| CUSTOMER COPY FOR REFERENCE ONLY | | |
| DR DATE 22-4-1978 | © 1978 BY AMP-HOLLAND N.V. ALL RIGHTS RESERVED A-MP PRODUCTS COVERED BY PATENTS AND/OR PATENTS PENDING. | |
| CHK | AMP - HOLLAND N.V. 's-Hertogenbosch | |
| DE | | |
| DATE | WIRE RANGE | INSUL. RANGE |
| DATE | SCALE N.T.S. | FIRST USED |
| DATE | SIZE NO B | DATE |
| DATE | L-164897 | |
| DATE | REV E1 | |
| NAME: 2.20 POS. WIRE HARNESS ASSEMBLY RIGHT ANGLED FOR MAIN HARNESS INTERCONNECTION SYSTEM, PITCH: 2.5 mm. | | |

DIMENSIONS IN M.M. DO NOT SCALE PRINT. DIMENSIONS IN INCHES.