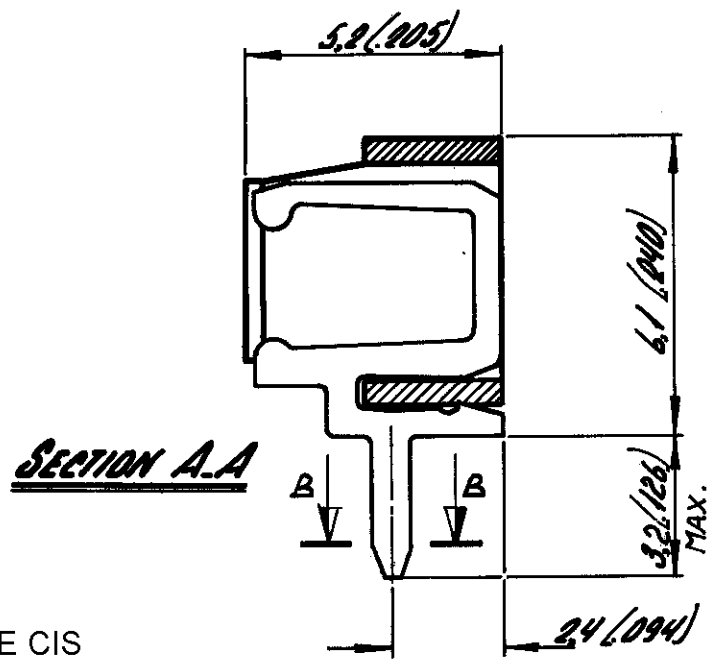
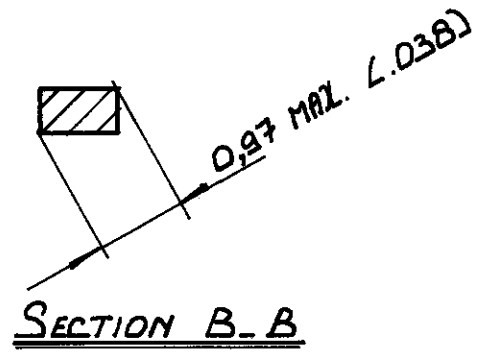


OBSOLETE

ORDER NUMBER	NUMBER OF POSITIONS	"L" MAX. M.M.	"L" MAX.
1-164711-2	2	5.0	.197
1-3	3	7.5	.296
1-4	4	10.0	.394
OBSOLETE 1-5	5	12.5	.493
1-6	6	15.0	.591
1-7	7	17.5	.690
OBSOLETE 1-8	8	20.0	.788
OBSOLETE 1-9	9	22.5	.886
1-10	10	25.0	.985
1-11	11	27.5	1.083
1-12	12	30.0	1.182
1-13	13	32.5	1.280
1-14	14	35.0	1.378
1-15	15	37.5	1.477
1-16	16	40.0	1.575
OBSOLETE 1-17	17	42.5	1.674
1-18	18	45.0	1.772
1-19	19	47.5	1.871
OBSOLETE 2-164711-0	20	50.0	1.969

MATERIAL: HOUSING: P.B.T., 20% GLASS FILLED.
 CONTACT: BRASS, TIN-LEAD (93/7) PLATING OVER
 NICKEL BARRIER

G2	REVISED PER ECO-10-000445	09JAN10	KK	AEG
G1	ECR-08-014307	29-01-09	AEG	WRV



△ OBSOLETE PARTS: OBSOLETE CIS
 STREAMLINING PER D.RENAUD/D.SINISI

SEE TABLE.	SEE ABOVE.	SEE ABOVE.
ORDER NO.	MATERIAL	PLATING
CUSTOMER COPY FOR REFERENCE ONLY		
DR <i>[Signature]</i> DATE 24.4.1978	©1978 BY AMP-HOLLAND N.V. ALL RIGHTS RESERVED A-MP PRODUCTS COVERED BY PATENTS AND/OR PATENTS PENDING.	
CHK	DATE	AMP AMP - HOLLAND N.V. 's-Hertogenbosch
DE	DATE	
APP <i>[Signature]</i> DATE 21/4/81	WIRE-RANGE N.T.S.	INSUL.-RANGE B
	SCALE	FIRST USED
	SIZE	NO
	NO	REV
	C-164711	
	NAME 2 - 20 POS. FEMALE BOARD TO BOARD CONNECTOR AS: 1 FOR MINI MATCH INTERCONNECTION SYSTEM. PITCH: 2.5 MM.	

DIMENSIONS IN M.M. DO NOT SCALE PRINT DIMENSIONS THICK LINES IN ANGLES