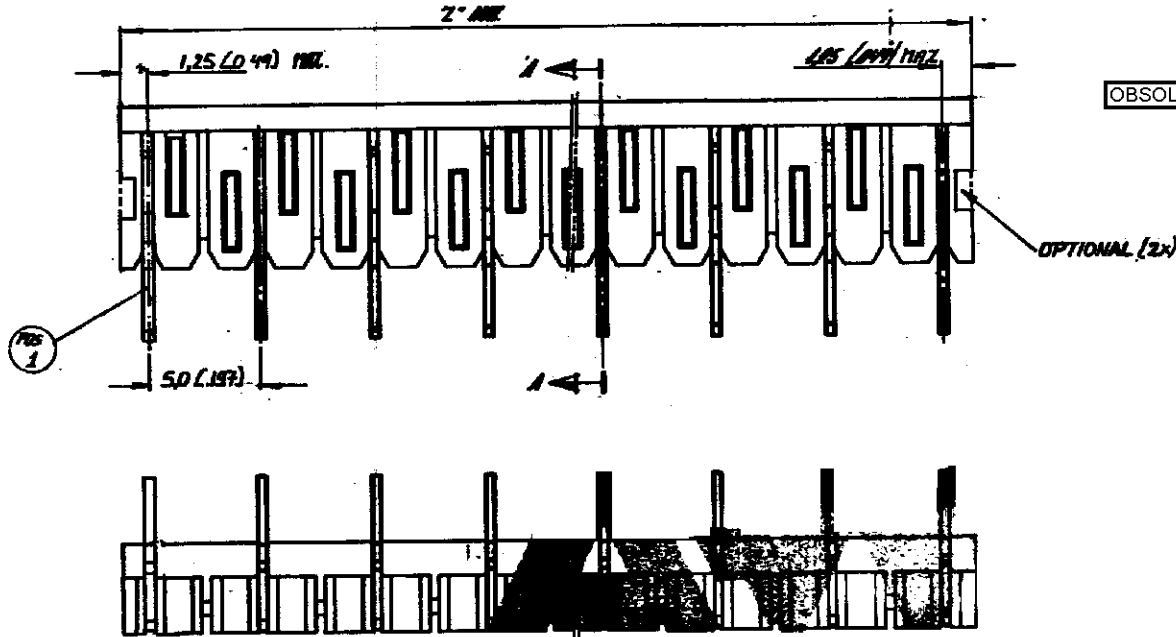


DRAWING MADE IN AMERICAN PROJECTION

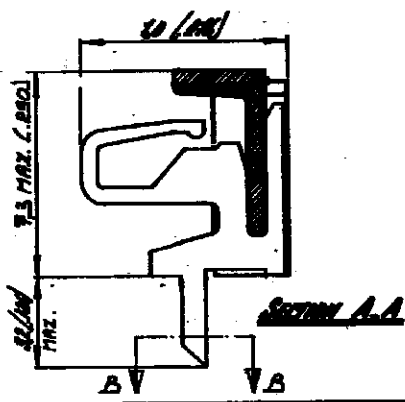
E1 ECR-08-014314 02-02-09 AEG WRV



OBSOLETE

ORDER NUMBER	NUMBER OF PROFILES	2" MAX M.M.	MAX
161601	2	25	.295
	3	45	.492
	4	75	.689
	5	125	.886
	6	175	1.083
	7	225	1.280
	8	275	1.476
	9	325	1.673
L	10	375	1.870
L	11	425	2.067
L	12	475	2.264
	13	525	2.461
	14	575	2.658
1-161601	15	625	2.854

MATERIAL: MOLDING: P.C. 90% GLASS FILLED
 CONTACT: PHOSPHOR BRONZE
 PLATING: TIN-LEAD 93/7



SEE TABLE	SEE ABOVE	SEE ABOVE
ORDER NO.	MATERIAL	PLATING
CUSTOMER COPY FOR REFERENCE ONLY		
DATE PVT 17-4-81	© 1987 BY AMP-HOLLAND N.V. ALL RIGHTS RESERVED. AMP PRODUCTS COVERED BY PATENTS AND/OR PATENTS PENDING.	
SCALE N.P.S.	SIZE B	NO C-161601
DATE 4/10	NAME 2 - IS PINE WIRE MESHED ADPT. RIGHT ANGLED FOR BEND WITH INTERCONNECTING SADDLE, PVT. 5.0 MAX.	

AMP-HOLLAND N.V.
 's-Hertogenbosch

REV E1

DRAWING MADE IN AMERICAN PROJECTION