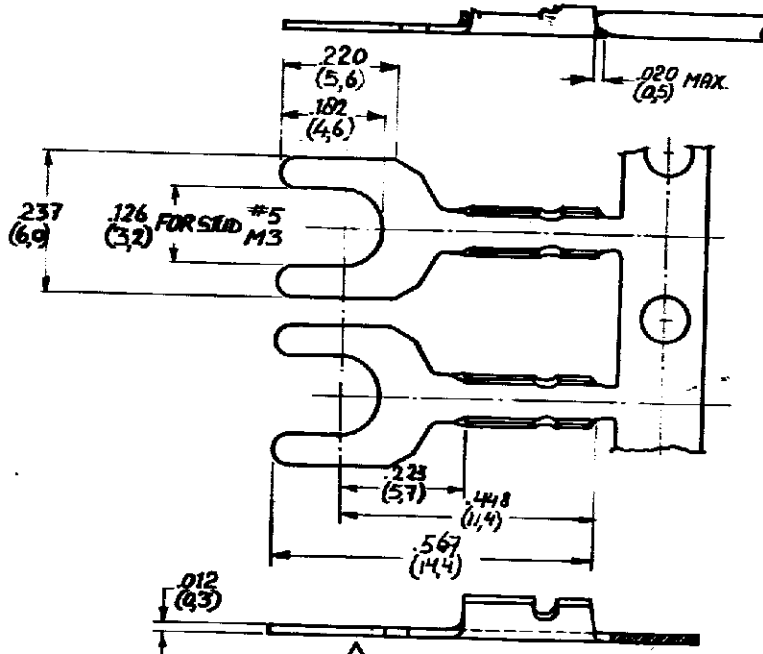
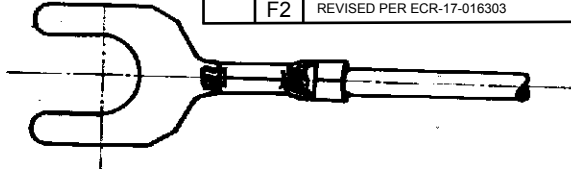


NUMBER C-160716

DRAWING MADE IN AMERICAN PROJECTION

P	LTR	REVISION RECORD	DATE	DWN	APVD
	F1	REVISED PER-ECO-09-022178	SEP09	KK	AEG
	F2	REVISED PER ECR-17-016303	14NOV2017	BDA	FV



- ① FOR USE ON STANDARD APPLICATORS (RIGHT - LEFT FEED)
- ② FOR USE ON MINIATURE APPLICATORS (LEFT - RIGHT FEED)
- ③ OBSOLETE PARTS: OBSOLETE CIS STREAMLINING PER D.RENAUD/D.SINISI

DIMENSIONS IN () ARE DO NOT SCALE PRINT

160716-7	BRASS	PRE-NI	2
160716-6	BRASS	PRE-NI	1
160716-4	BRASS		2
160716-3	BRASS	TIN	1
160716-2	BRASS	NICKEL	1
160716-1	BRASS		1

CUSTOMER COPY FOR REFERENCE ONLY

© 1971 BY AMP-HOLLAND N.V. ALL RIGHTS RESERVED A-MP PRODUCTS COVERED BY PATENTS AND/OR PATENTS PENDING.



WIRE RANGE	INSUL RANGE	FIRST USED
275-1110 CMM	Ø15 - Ø55 DMR	
Ø15 - Ø55 MAX	Ø8 - 1.57	

ORDER NO.	MATERIAL	PLATING	SCALE	LOC	SIZE	NO	REV
160716-7	BRASS	PRE-NI	4:1	H	A	C-160716	F2

NAME: SPADE with insulation support