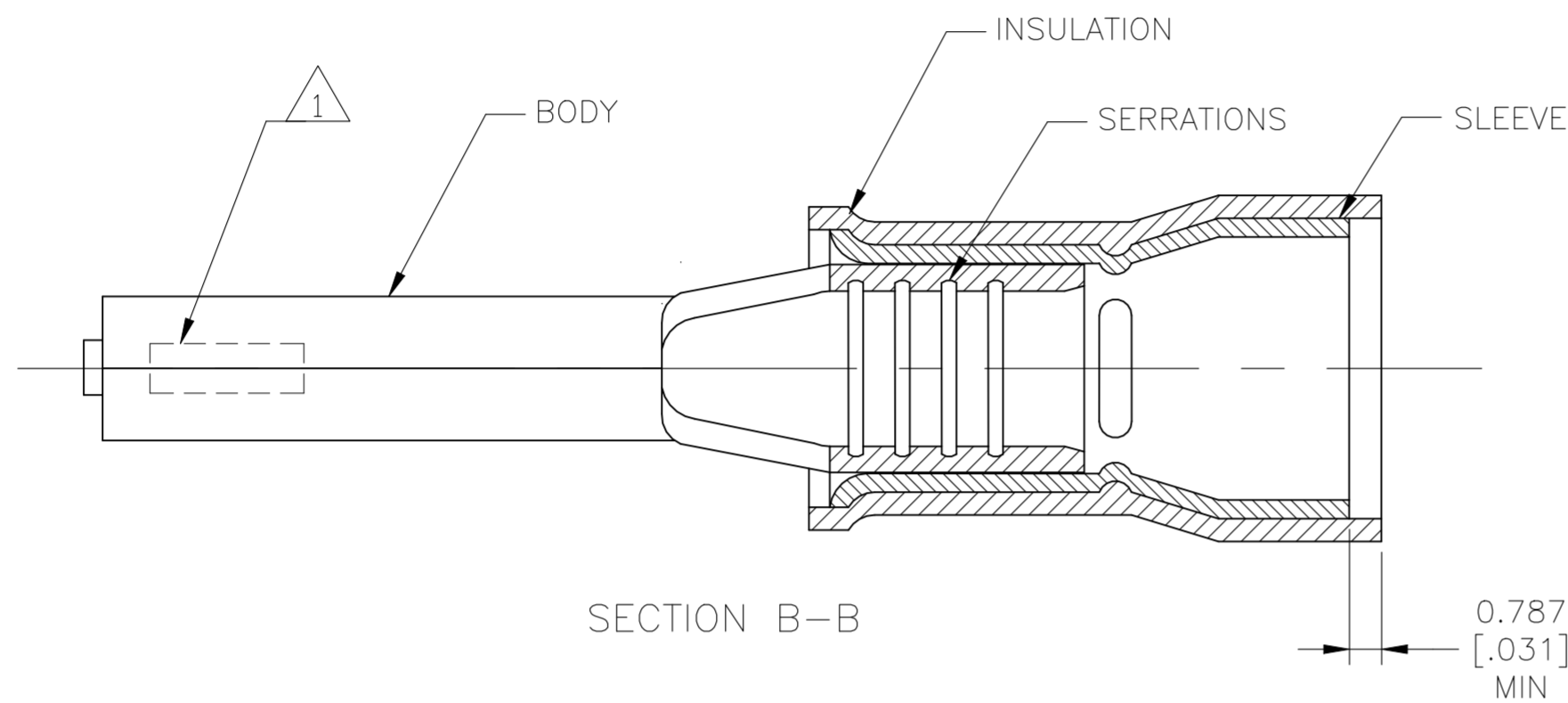
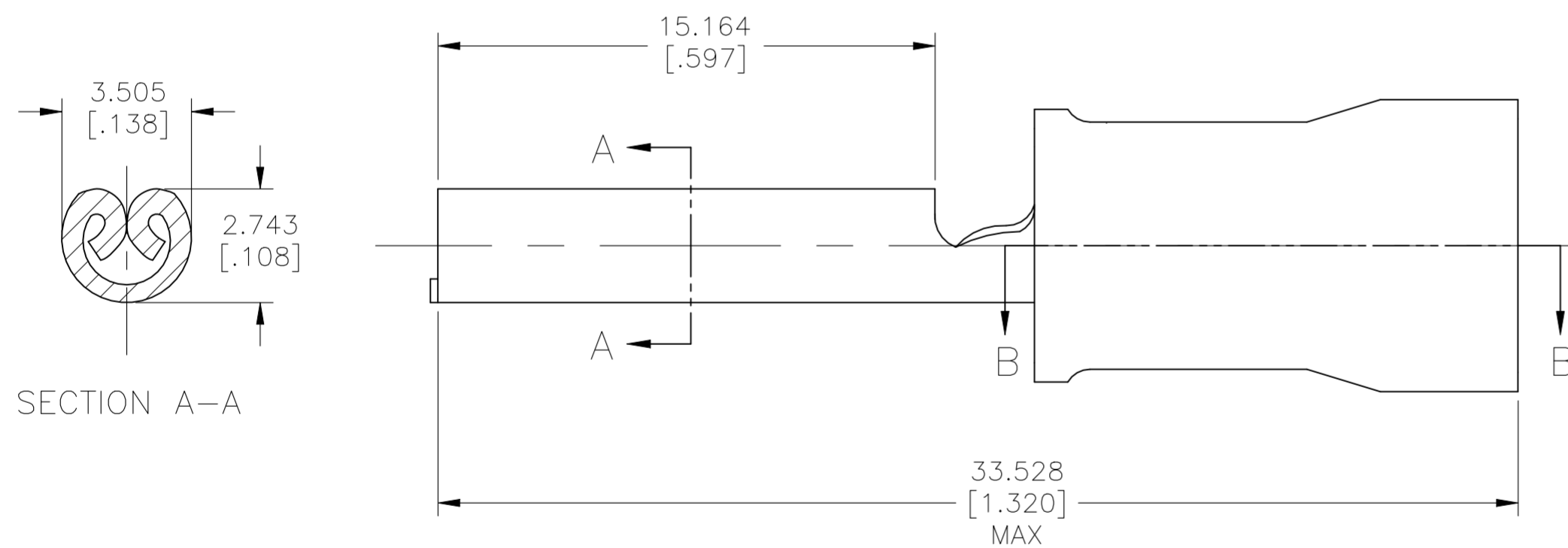


REVISIONS					
P	LTR	DESCRIPTION	DATE	DWN	APVD
D2		REVISED (ECN-22-173996)	14SEP2022	LP	DSC

<b>AMP</b> WIRE RANGE	<b>RU</b> FILE E13288
12-10 AWG STRANDED	12-10 AWG STRANDED



- 1 STAMP AMP APPROX AS SHOWN
- 2 WIRE INSULATION DIAMETER:  
Ø6.350[.250] MAX
- 3 MATERIAL:  
BODY - BRASS PER ASTM B36  
SLEEVE - COPPER PER ASTM B152  
INSULATION - NYLON PER ASTM D4066 TYPE 1
- 4 FINISH:  
BODY - TIN PLATE 0.002032[.000080] - 0.006350[.000250]  
MIN EXT THK PER ASTM B545  
SLEEVE - TIN PLATE 0.00254[.000100]  
MIN EXT THK PER ASTM B545  
INSULATION COLOR - YELLOW



500	LOOSE PIECE	160404-2
QTY	PACKAGE TYPE	PART NO

<b>CUSTOMER SERVICE SYSTEMS</b>		MAX RECOMMENDED OPERATING TEMPERATURE: 105°C [221°F]
FOR ADDITIONAL PRODUCT INFORMATION OR COPIES OF DRAWINGS AND TECHNICAL DOCUMENTS	PRODUCT INFORMATION CENTER 1-800-522-6752	VOLTAGE RATING: 300 V MAX
FOR APPLICATION TOOLING INFORMATION	TOOLING ASSISTANCE CENTER 1-800-722-1111	CIRCULAR MIL AREA: 4.0-6.0mm² [7894-11841] STRANDED
FOR ORDER ENTRY	1-800-526-5142	THIS DRAWING IS A CONTROLLED DOCUMENT FOR AMP INCORPORATED. IT IS SUBJECT TO CHANGE AND THE CONTROLLING ENGINEERING ORGANIZATION SHOULD BE CONTACTED FOR THE LATEST REVISION.

THIS DRAWING IS A CONTROLLED DOCUMENT.		DWN NAGALAKSHMI K 09JAN2016	<b>TE</b> TE Connectivity	
DIMENSIONS: mm [INCHES]		CHK ROHDE DANIEL F 09JAN2016	NAME ROHDE DANIEL F	
TOLERANCES UNLESS OTHERWISE SPECIFIED: 0 PLC ± - 1 PLC ± - 2 PLC ± - 3 PLC ± 0.127[.005] 4 PLC ± - ANGLES ± -		APVD ROHDE DANIEL F 09JAN2016	PRODUCT SPEC UL 486A-B	
MATERIAL		FINISH	APPLICATION SPEC 114-2157	RESTRICTED TO
3		4	WEIGHT -	SCALE 5:1 SHEET 1 of 1 REV D2
CAGE CODE A2 00779		DRAWING NO C=160404		
CUSTOMER DRAWING				