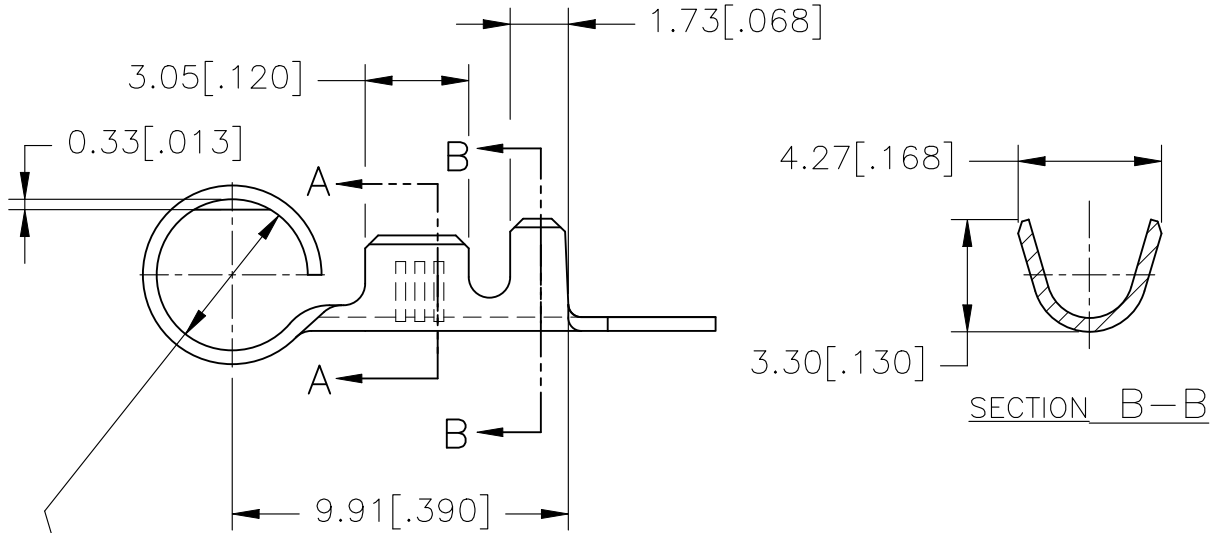
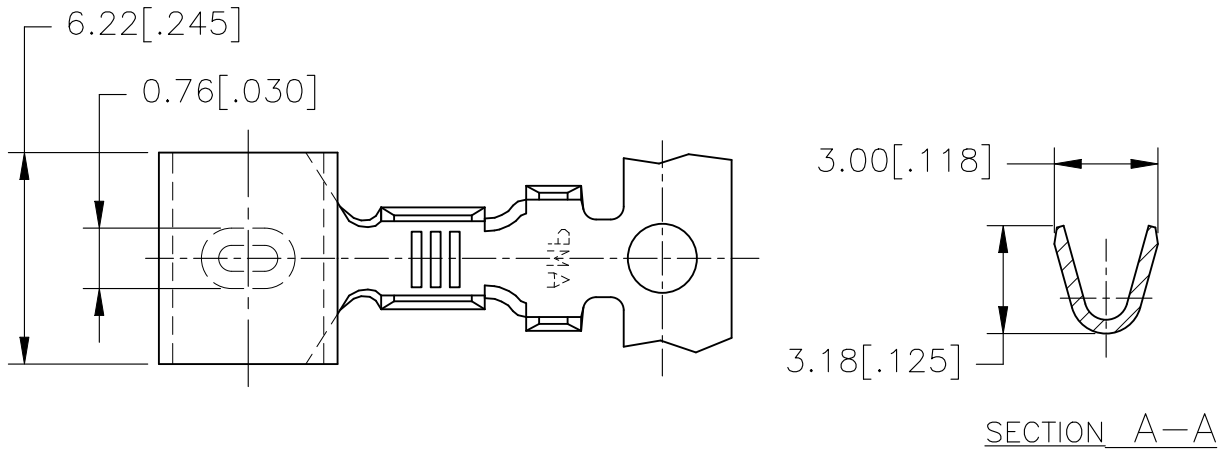


REVISIONS				
P	LTR	DESCRIPTION	DATE	APVD
	A2	ECR-24-200596	20FEB2024	SS RE



$\phi 4.50$  [ $\phi .177$ ]  
 $\phi 4.39$  [ $\phi .173$ ]

1 REELED WITH INTERLEAVING PAPER

THIS DRAWING IS UNPUBLISHED. ALL RIGHTS RESERVED. BY - COPYRIGHT -

STOCK THK.	0.41 [.016] THK.
WIRE RANGE	INSUL RANGE
20-16	1.5-2.13 [.059-.084]

TIN PLATE	PHOS. BRONZE	154740-2 $\Delta$ 1
NONE	PHOS. BRONZE	154740-1
FINISH	MATERIAL	PART NUMBER

DIMENSIONS:		DWN	04JAN2017
mm [INCHES]		CHK	04JAN2017
TOLERANCES UNLESS OTHERWISE SPECIFIED:		APVD	04JAN2017
0 PLC	$\pm -$	PRODUCT SPEC	-
1 PLC	$\pm -$	APPLICATION SPEC	-
2 PLC	$\pm 0.40$ [.015]	WEIGHT	-
3 PLC	$\pm 0.40$ [.015]		
4 PLC	$\pm -$		
ANGLES	$\pm -$		

MATERIAL	SEE TABLE	FINISH	SEE TABLE
<b>STE</b> TE Connectivity			
NAME .177 (4.50) DIA. RIGHT ANGLE PIN RECEPTACLE			
SIZE	CAGE CODE	DRAWING NO	RESTRICTED TO
A4	00779	C-154740	-
CUSTOMER DRAWING			SCALE 4:1 SHEET 1 OF 1 REV A2