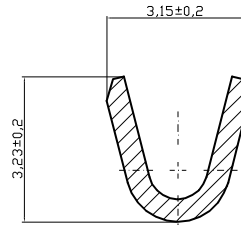
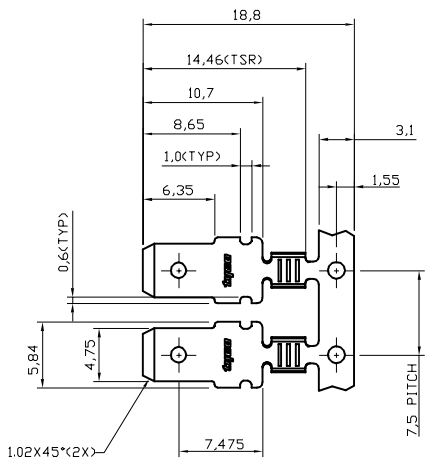


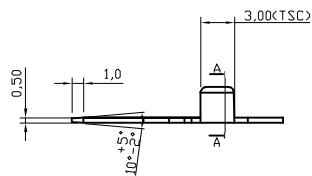
THIS INFORMATION IS CONFIDENTIAL AND PROPRIETARY TO TYCO ELECTRONICS CORPORATION AND ITS WORLDWIDE SUBSIDIARIES AND AFFILIATES. IT MAY NOT BE DISCLOSED TO ANYONE, OTHER THAN TYCO ELECTRONICS PERSONNEL WITHOUT WRITTEN AUTHORIZATION FROM TYCO ELECTRONICS CORPORATION, HARRISBURG, PENNSYLVANIA USA.

6 5 4 3 2 1

DIST	LOC	P	LTR	REVISION/RECORD	DATE	DWN	APVD
	EC		0	FH10-0022-04	16/06/04	S.L	BW

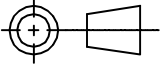



SECTION A-A  
4:1



NOTES:

- ① MATERIALS: COPPER ALLOY.
- ② FINISH: PLATING MATE TIN OVER NI.
- 3. CONTINUOUS STRIP ON REELS.
- 4. APPLICATION DATA:  
WIRE RANGE: 0.5~1.3mm<sup>2</sup>

②		①		1494213-1	
FINISH		MATERIAL		P/N	
TOLERANCES UNLESS OTHER SPECIFIED: 0 PLC ± 1 PLC ± 0.2 2 PLC ± 0.15 3 PLC ± 4 PLC ± ANGLE ±  DIMENSIONS IN mm		DR	STANLEY LU	DATE	MAR. 17,04
		CHK	BORIS WONG	DATE	MAR. 17,04
		APVD	S. F. SHUM	DATE	MAR. 17,04
		PRODUCT SPEC		108-58503	
APPLICATION SPEC		114-58502		NAME	
		RESTRICTED TO	SCALE	SIZE	DWG NO.
			1:1	A4	C-1494213
		MATERIAL		FINISH	
		SEE TABLE		SEE TABLE	
		 Tyco Electronics Hong Kong Limited Room 1301, Ocean Centre No. 5 Canton Rd, Tsimshatsui Kowloon Hong Kong			
		SIZE(.187) FASTON TAB TERMINAL			
		SHEET		REV	
		1 OF 1		0	

6 5 4 3 2 1