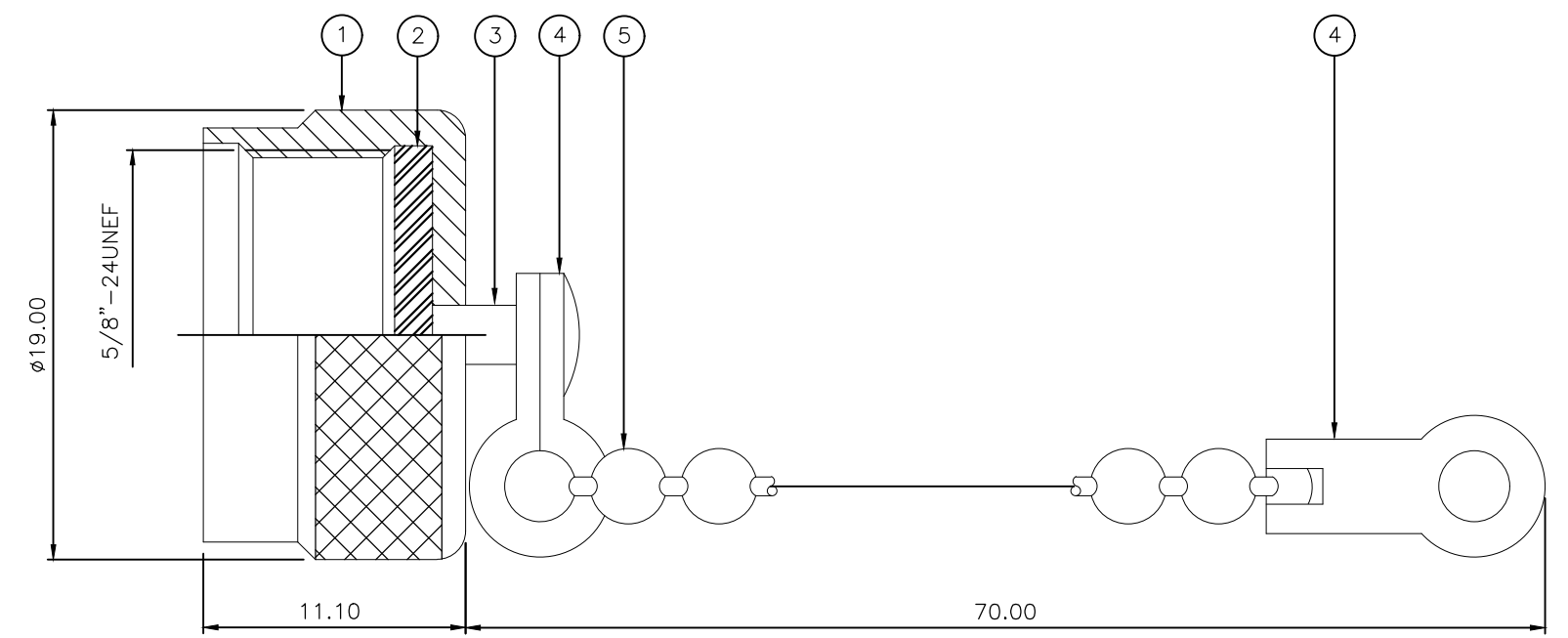


THIS DRAWING IS UNPUBLISHED. RELEASED FOR PUBLICATION AUGUST ,2006.
 © COPYRIGHT 2006 By - ALL RIGHTS RESERVED.

REVISIONS				
P	LTR	DESCRIPTION	DATE	APVD
	B2	REVISED PER ECR-20-001381	04FEB2020	RZ RS

- NOTES:**
- 1 SINGLE PACKING: ONE CONNECTOR PER LABELED BAG PACKAGED. LABELED PER TEC-107-115
 - 2 TRAY PACKAGED
 - 3 Ag PLATING
 - 4 THIS ITEM MUST BE WHITE
- 5 ELECTRICAL CHARACTERISTICS
 FREQUENCY RANGE: N/A
 NOMINAL IMPEDANCE: N/A
 INSULATION RESISTANCE: N/A
 WORKING VOLTAGE: N/A
 DIELECTRIC WITHSTAND VOLTAGE: N/A
 CONTACT RESISTANCE: N/A
 CENTRE CONTACT: N/A
 OUTER CONTACT: 1.00 mOhm Max
- 6 MECHANICAL CHARACTERISTICS
 COUPLING RETENTION FORCE: 445N Min
 DURABILITY: 500 Cycles Min
- 7 ENVIRONMENTAL CHARACTERISTICS
 OPERATING TEMPERATURE: -65 to +165 DegC
- 8 FOR TECHNICAL DATA REFER TO YOUR LOCAL TYCO ELECTRONICS SALES OFFICE
- 9 ALL DIMENSIONS ARE NOMINAL FOR REFERENCE ONLY UNLESS OTHERWISE STATED



OBSOLETE

QTY	QTY PER ASSY	QTY PER ASSY	DESCRIPTION	ITEM	
1	1	1	BRASS	CHAIN	5
1	2	2	STEEL	JOINT	4
1	1	1	BRASS	RIVET	3
1	1	1	SILICONE RUBBER	GASKET	2
1	1	1	BRASS	BODY	1
6	1	1	MATERIAL	DESCRIPTION	ITEM
QUANTITY PER ASSY		PARTS LIST			

THIS DRAWING IS A CONTROLLED DOCUMENT.		DWN J.SANDWELL 23AUG06	TE Connectivity											
DIMENSIONS: mm		CHK S.PARLOW 23AUG06												
TOLERANCES UNLESS OTHERWISE SPECIFIED:		APVD F.WHEELER-KING 23AUG06												
<table border="0"> <tr><td>0 PLC</td><td>± -</td></tr> <tr><td>1 PLC</td><td>± -</td></tr> <tr><td>2 PLC</td><td>± -</td></tr> <tr><td>3 PLC</td><td>± -</td></tr> <tr><td>4 PLC</td><td>± -</td></tr> <tr><td>ANGLES</td><td>± -</td></tr> </table>		0 PLC			± -	1 PLC	± -	2 PLC	± -	3 PLC	± -	4 PLC	± -	ANGLES
0 PLC	± -													
1 PLC	± -													
2 PLC	± -													
3 PLC	± -													
4 PLC	± -													
ANGLES	± -													
MATERIAL SEE TABLE	FINISH -	PRODUCT SPEC -	APPLICATION SPEC -	SIZE A3	CAGE CODE 00779	DRAWING NO C-1478230	RESTRICTED TO -							
CUSTOMER DRAWING			SCALE NTS	SHEET 1 OF 1	REV B2									