

4

3

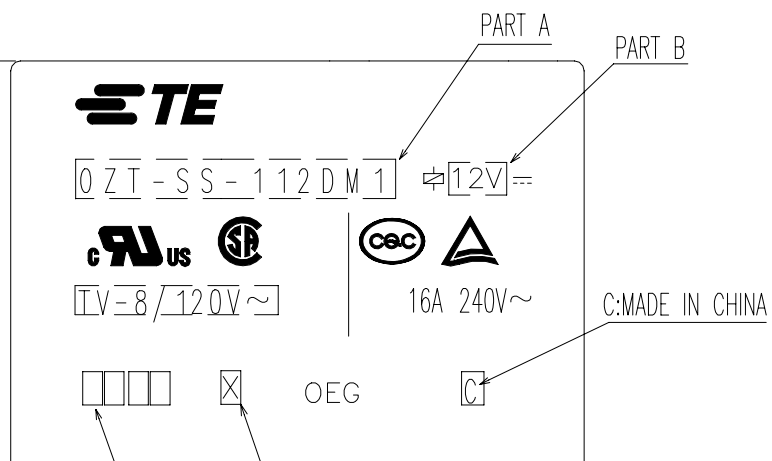
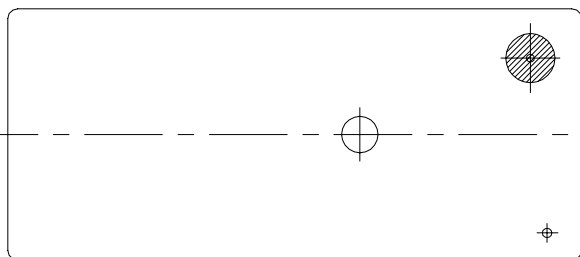
2

1

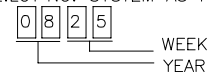
© - TE Connectivity. All Rights Reserved.

REVISIONS

P	LTR	DESCRIPTION	DATE	DWN	APVD
	J	OBSOLETE SOME PNs	ECN-22-148885	14-JUL-22	XR.L K.T



NOTES:
 1. TERMINAL DIMENSION IS NOT INCLUDING SOLDER TIP.
 2. LOT NO. SYSTEM AS FOLLOWING:



3. GENERAL TOLERANCE AS FOLLOW:

TOLERANCE	
0~0.99mm	±0.1
1mm~2.99mm	±0.2
3mm MIN.	±0.3

4. FOR THE TIN-PLATING OF THE PINS:
 +0.1mm FOR WIDTH, THICKNESS AND DIAMETER.
 +0.5mm FOR LENGTH.

⌀ 20.4

⌀ 4.1

0.6

0.3

0.3

1.2

1.2

0.6

1.85

20

5.0

2.3

7.5

12.8

29.2

THIS DRAWING IS A CONTROLLED DOCUMENT.		DWN LIU, DAVEY	13MAY2009	TE Connectivity Ltd.	
DIMENSIONS: mm		CHK BANGHUA, YU	-		
TOLERANCES UNLESS OTHERWISE SPECIFIED:		APVD SUNNY, ZHANG	-	PRODUCT SPEC	
0 PLC ± - 1 PLC ± - 2 PLC ± - 3 PLC ± - 4 PLC ± - ANGLES ± -		APPLICATION SPEC		OZT-D/LM1 CUSTOMER DRAWING	
MATERIAL		FINISH		SIZE A3	CAGE CODE 00779
				DRAWING NO C=1461254-2	RESTRICTED TO
				WEIGHT	-
				CUSTOMER DRAWING	SCALE 4:1
				SHEET 1 OF 2	REV J

4

3

2

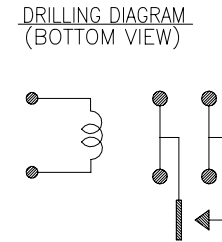
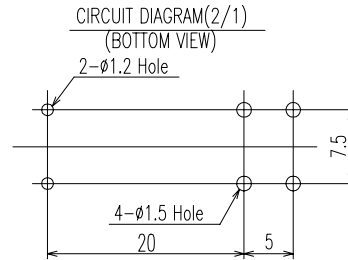
1

© - TE Connectivity. All Rights Reserved.

REVISIONS

P	LTR	DESCRIPTION	DATE	DWN	APVD
	G		16-DEC-14		

OBSOLETE	9-1419145-2	OZT-SH-112LM1	OZT-SH-112LM1	12V	32	Ⓧ
OBSOLETE	2-1419124-7	OZT-SH-124LM1	OZT-SH-124LM1	24V	31	Ⓧ
OBSOLETE	3-1419124-4	OZT-SS-148LM1	OZT-SS-148LM1	48V	30	Ⓧ
OBSOLETE	3-1419124-3	OZT-SS-124LM1	OZT-SS-124LM1	24V	29	Ⓧ
OBSOLETE	3-1419124-1	OZT-SH-112LM1	OZT-SS-112LM1	12V	28	Ⓧ
OBSOLETE	1-1461392-2	OZT-SH-148LM1	OZT-SH-148LM1	48V	27	Ⓧ
OBSOLETE	1-1461392-1	OZT-SH-148DM1	OZT-SH-148DM1	48V	26	Ⓧ
ACTIVE	1-1461392-0	OZT-SH-124LM1	OZT-SH-124LM1	24V	25	Ⓧ
OBSOLETE	1461392-9	OZT-SH-124DM1	OZT-SH-124DM1	24V	24	Ⓧ
OBSOLETE	1461392-8	OZT-SH-112LM1	OZT-SH-112LM1	12V	23	Ⓧ
OBSOLETE	1461392-7	OZT-SH-112DM1	OZT-SH-112DM1	12V	22	Ⓧ
OBSOLETE	1461392-6	OZT-SH-109LM1	OZT-SH-109LM1	9V	21	Ⓧ
OBSOLETE	1461392-5	OZT-SH-109DM1	OZT-SH-109DM1	9V	20	Ⓧ
OBSOLETE	1461392-4	OZT-SH-106LM1	OZT-SH-106LM1	6V	19	Ⓧ
OBSOLETE	1461392-3	OZT-SH-106DM1	OZT-SH-106DM1	6V	18	Ⓧ
OBSOLETE	1461392-2	OZT-SH-105LM1	OZT-SH-105LM1	5V	17	Ⓧ
OBSOLETE	1461392-1	OZT-SH-105DM1	OZT-SH-105DM1	5V	16	Ⓧ
OBSOLETE	1-1461254-0	OZT-SS-148DM1	OZT-SS-148DM1	48V	15	Ⓧ
ACTIVE	1461254-9	OZT-SS-124DM1	OZT-SS-124DM1	24V	14	Ⓧ
OBSOLETE	1461254-8	OZT-SS-109LM1	OZT-SS-109LM1	9V	13	Ⓧ
OBSOLETE	1461254-7	OZT-SS-109DM1	OZT-SS-109DM1	9V	12	Ⓧ
OBSOLETE	1461254-6	OZT-SS-106LM1	OZT-SS-106LM1	6V	11	Ⓧ
OBSOLETE	1461254-5	OZT-SS-106DM1	OZT-SS-106DM1	6V	10	Ⓧ
OBSOLETE	1461254-4	OZT-SS-105LM1	OZT-SS-105LM1	5V	9	Ⓧ
OBSOLETE	1461254-3	OZT-SS-105DM1	OZT-SS-105DM1	5V	8	Ⓧ
OBSOLETE	1461254-2	OZT-SS-112DM1	OZT-SS-112DM1	12V	7	Ⓧ
OBSOLETE	1461254-1	OZT-SS-103DM1	OZT-SS-103DM1	3V	6	Ⓧ
OBSOLETE	3-1440002-8	OZT-SS-148LM1	OZT-SS-148LM1	48V	5	Ⓧ
ACTIVE	3-1440002-7	OZT-SS-124LM1	OZT-SS-124LM1	24V	4	Ⓧ
ACTIVE	3-1440002-6	OZT-SS-112LM1	OZT-SS-112LM1	12V	3	Ⓧ
OBSOLETE	3-1440002-5	OZT-SH-124LM1	OZT-SH-124LM1	24V	2	Ⓧ
OBSOLETE	3-1440002-4	OZT-SH-112LM1	OZT-SH-112LM1	12V	1	Ⓧ
PACKING SPEC.	PART STATUS	TE PART NO	DESCRIPTION	PART A	PART B	ITEM



107-79006

RELAY TYPE

		UV RESIN	UV SEAL	16	
		EPOXY RESIN	SEAL	15	
		Cu ALLOY	HINGE SPRING	14	
		PBT	CASE	13	
		MW79	MAGNETIC WIRE	12	
UL94V-0		PET	BASE	11	
UL94HB		PBT	BOBBIN	10	
	SOLDER DIP	Cu ALLOY	COIL TERMINAL	9	
UL94V-0		PPS	CARD	8	
		Ag ALLOY	MOVABLE CONTACT	7	
		Ag ALLOY	STATIONARY CONTACT	6	
	SOLDER DIP	Cu ALLOY	MOVABLE SPRING	5	
	SOLDER DIP	Cu ALLOY	NO-TERMINAL	4	
		Ni PLATED	STEEL	CORE	3
		Ni PLATED	STEEL	ARMATURE	2
		Ni PLATED	STEEL	YOKE	1
INCOMBUSTIBILITY	TREATMENT	MATERIAL	DESCRIPTION	ITEM	

THIS DRAWING IS A CONTROLLED DOCUMENT.		DWN LIU, DAVEY 13MAY2009	TE Connectivity Ltd.	
DIMENSIONS: mm		CHK BANGHUA, YU	NAME	
TOLERANCES UNLESS OTHERWISE SPECIFIED: 0 PLC ±- 1 PLC ±- 2 PLC ±- 3 PLC ±- 4 PLC ±- ANGLES ±-		APVD SUNNY, ZHANG	OZT-D/LM1 CUSTOMER DRAWING	
MATERIAL		PRODUCT SPEC	SIZE	RESTRICTED TO
FINISH		APPLICATION SPEC	CAGE CODE	DRAWING NO
		WEIGHT	A3 00779	C=1461254-2
		CUSTOMER DRAWING		SCALE 4:1 SHEET 2 of 2 REV J