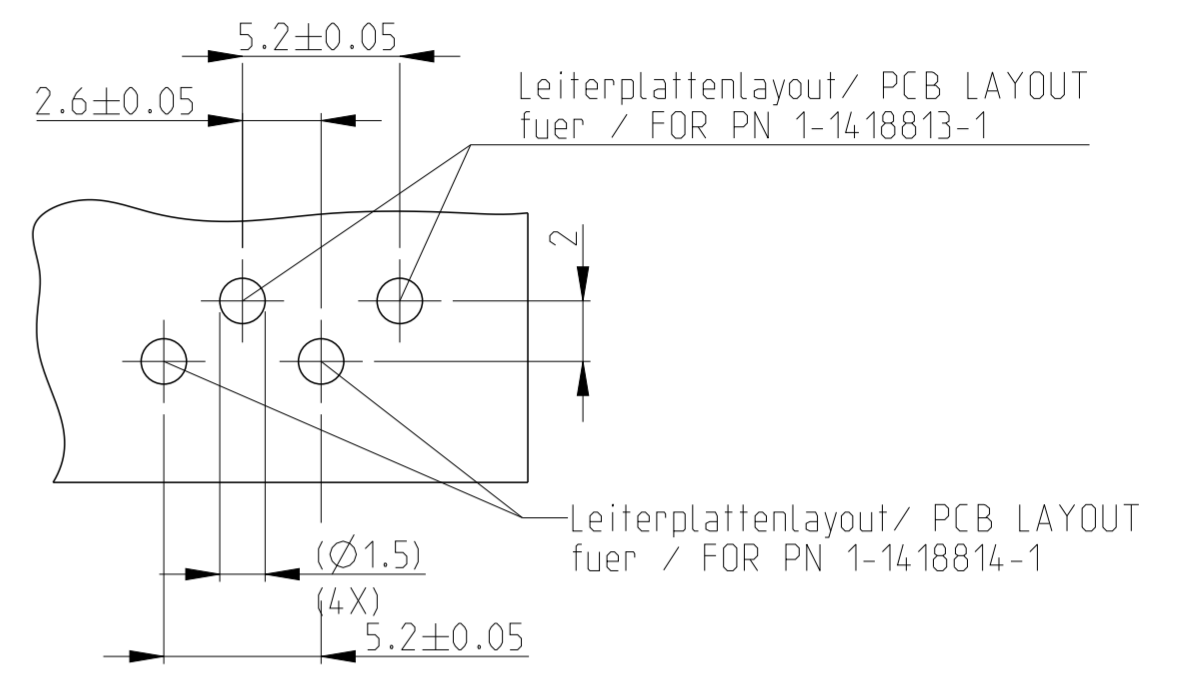
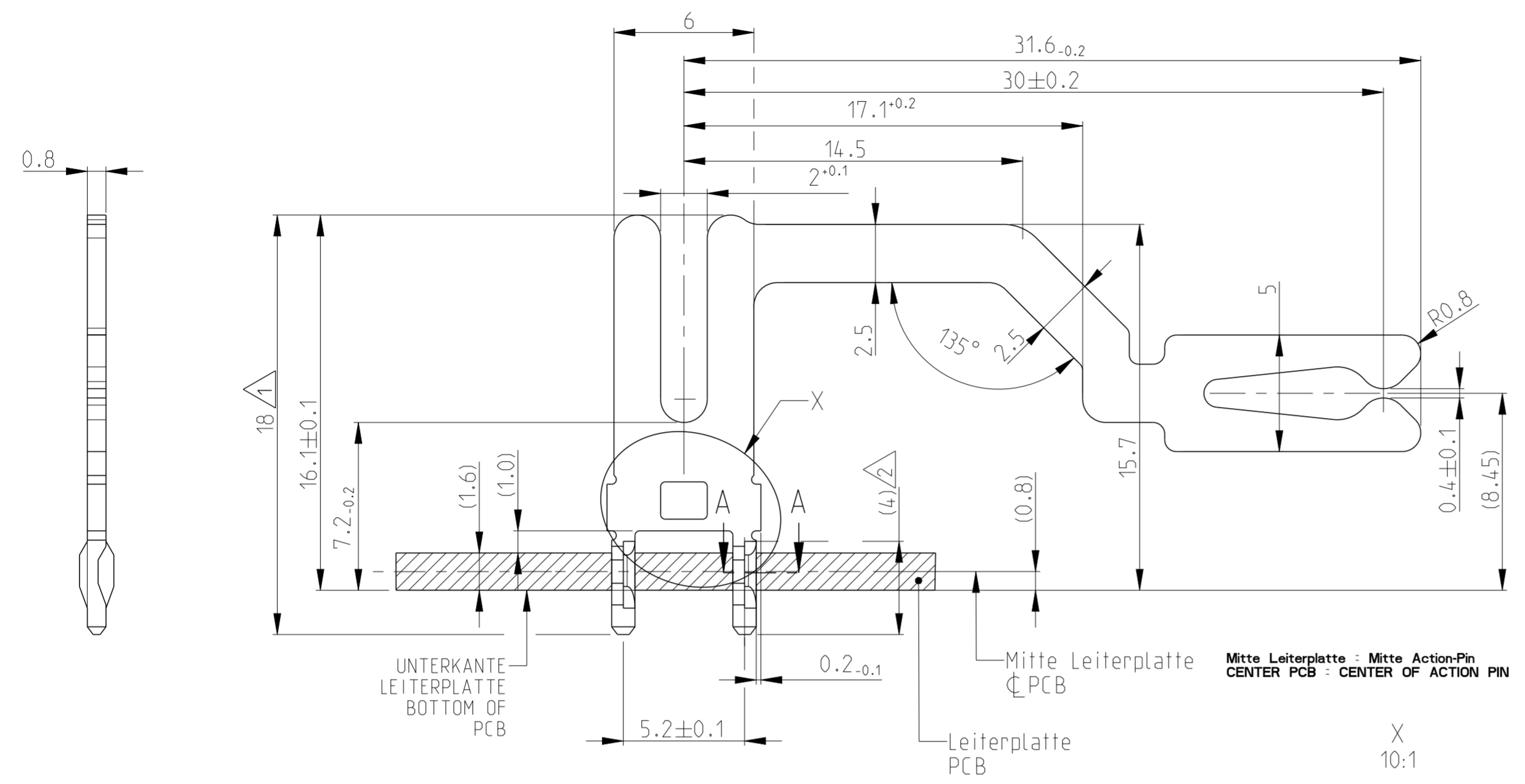


THIS DRAWING IS UNPUBLISHED.
 VERTRAULICHE UNVERÖFFENTLICHTE ZEICHNUNG
 © COPYRIGHT 2012 BY -

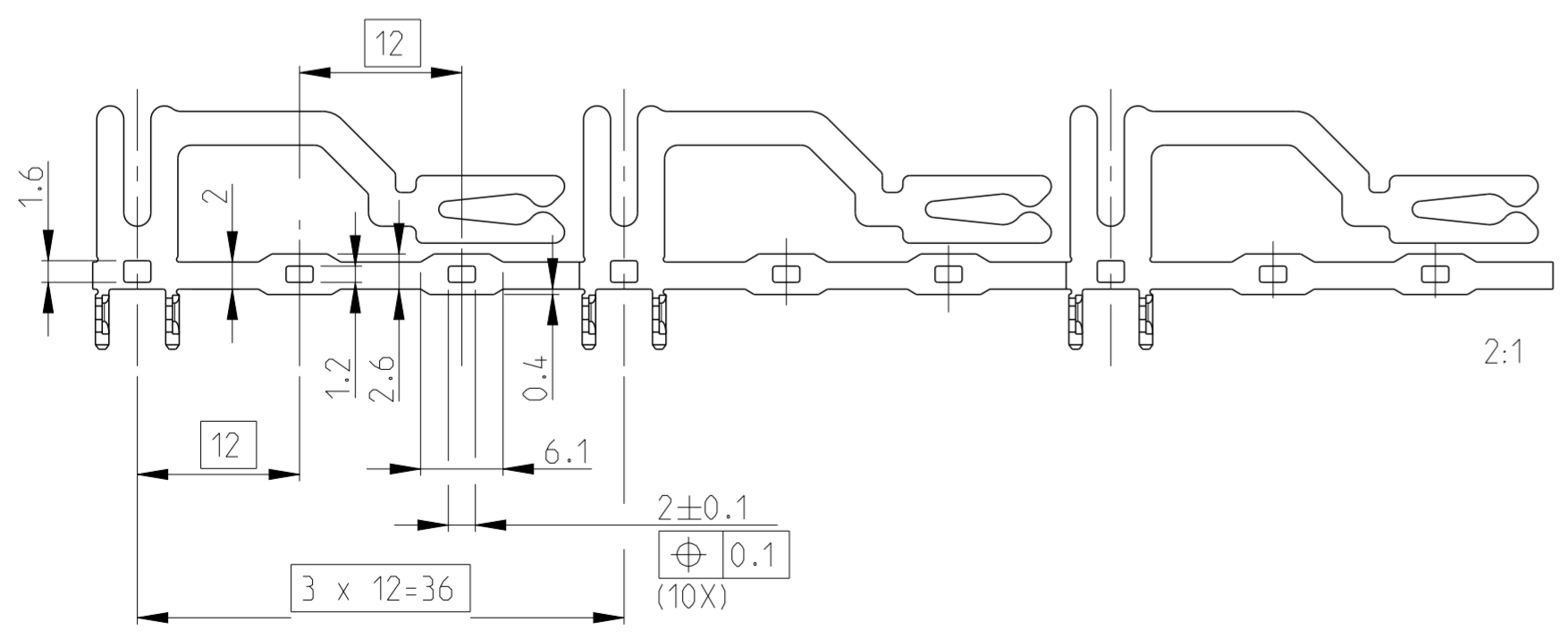
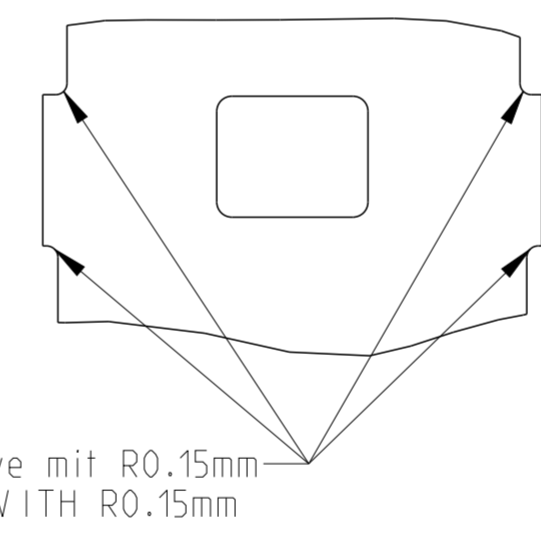
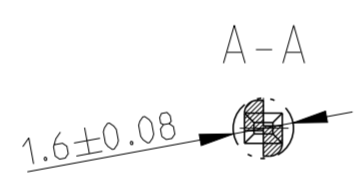
RELEASED FOR PUBLICATION
 FREI FUER VERÖFFENTLICHUNG
 ALL RIGHTS RESERVED.
 ALLE RECHTE VORBEHALTEN.

MATED WITH:
 PASSEND ZU:

PROJEKT NR.:		REVISIONS			
EGATN02094		ÄNDERUNGEN			
P	LTR	DESCRIPTION	DATE	DWN	APVD
	A1	DRW. OVERWORKING	29OCT2015	Ho.	-
	A2	DRW. OVERWORKED	29OCT2015	ST	HB



PLATED THROUGH HOLE SPECIFICATION	
SPEZIFIKATION FUER DURCHPLATIERTE BOHRUNGEN	
Cu THICKNESS KUPFER-SCHICHTDICKE	25-50 µm
Sn THICKNESS ZINN-SCHICHTDICKE	4-15 µm
DRILLED HOLE Ø1.5±0.025 BOHRLOCH-Ø1.5±0.025	FINISHED HOLE Ø1.29±0.15 PLATIIERTER LOCH-Ø1.29±0.15



NOTES
Bemerkungen

- 1 1-3 µm Sn PER TE-SPEC 112-16-3
OVER 1.27-2.54 µm Ni PER TE-SPEC 112-25-2
1-3 µm Sn nach TE-Spez. 112-16-3
ueber 1.27-2.54 µm Ni nach TE-Spez. 112-25-2
- 2 ACTION PIN FEATURE PER TE-SPEC.
Action Pin Zone nach TE-Spez.
- 3 PALLETSREEL: COIL CORE INSIDE MIN. Ø300mm
Palettenreel: Spulenkern innen min. Ø300mm

POS.	DIM L=	MATERIAL	FINISH	PART NO	REV.
1	30.0mm	CuSn4 (R605)	△	1-1418813-1	A

DIESE ZEICHNUNG IST EIN KONTROLLIERTES DOKUMENT. BEMASSUNGEN UND TOLERANZEN GEMAESS GPS (ISO STANDARDS).		DWN V. Holzmann 16OCT2012
THIS DRAWING IS A CONTROLLED DOCUMENT. DIMENSIONING AND TOLERANCING PER GPS (ISO STANDARDS).		CHK V. Holzmann 16OCT2012
DIMENSIONS: MASSEINHEITEN: (MM)	TOLERANCES UNLESS OTHERWISE SPECIFIED: ALLGEMEINTOLERANZEN DIN ISO 2768-m	APVD -
MATERIAL Cu Sn 4	FINISH/OBERFLAECHE/FARBE - △	NAME A_P-PCB MOTOR-CONTACT 90 DEG. A_P-PBC MOTOR-KONTAKT 90 GR.(30MM)
		PRODUCT SPEC 108-94014
		APPLICATION SPEC 114-18746
		WEIGHT -
		Customer Drawing



SIZE A2	CAGE CODE 00779	DRAWING NO ZEICHNUNGS-NR. C-1418813	RESTRICTED TO NUR FUER -
SCALE MASSSTAB 5:1	SHEET BLATT 1 OF 1	REV A2	