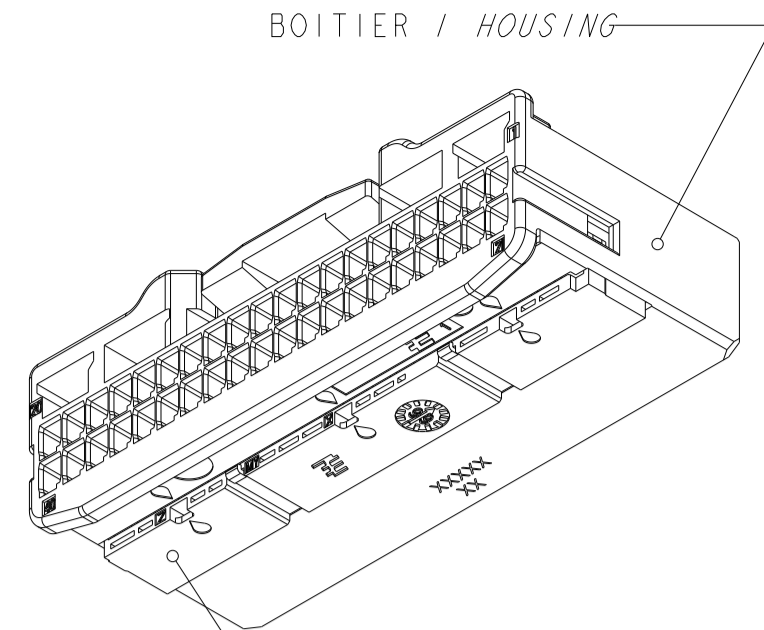
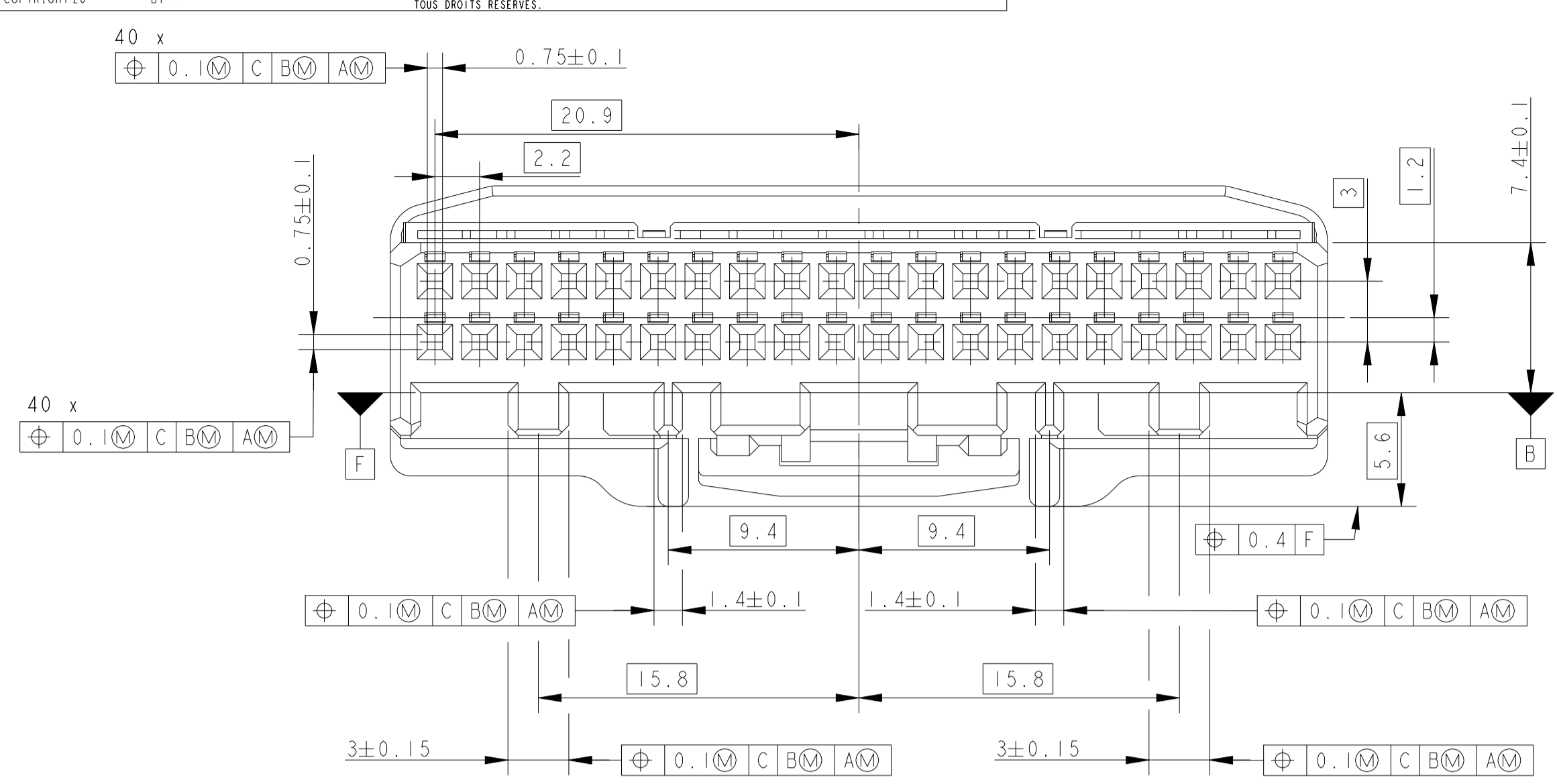
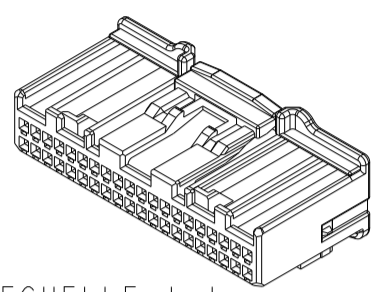


LOC	DIST	REVISIONS				
P	LTN	REV	DESCRIPTION MODIFICATIONS	DATE	DWN DES.	APPV
F	00					
C			MODIFY MARKING AREA	04AUG2009	P. B	BD
D			ADD ALTERNATE ANTI OVERSTRESS DESIGN	19AUG2013	DB	JPP
E			ERROR ON DRW FOR THE LATCH PROTECTION	13DEC2013	DB	JPP
F			PN 1674298-1 replace with PN 1123343-1	09JUN2022	CS	XR



BOITIER / HOUSING
ECHELLE 2:1 (SCALE)

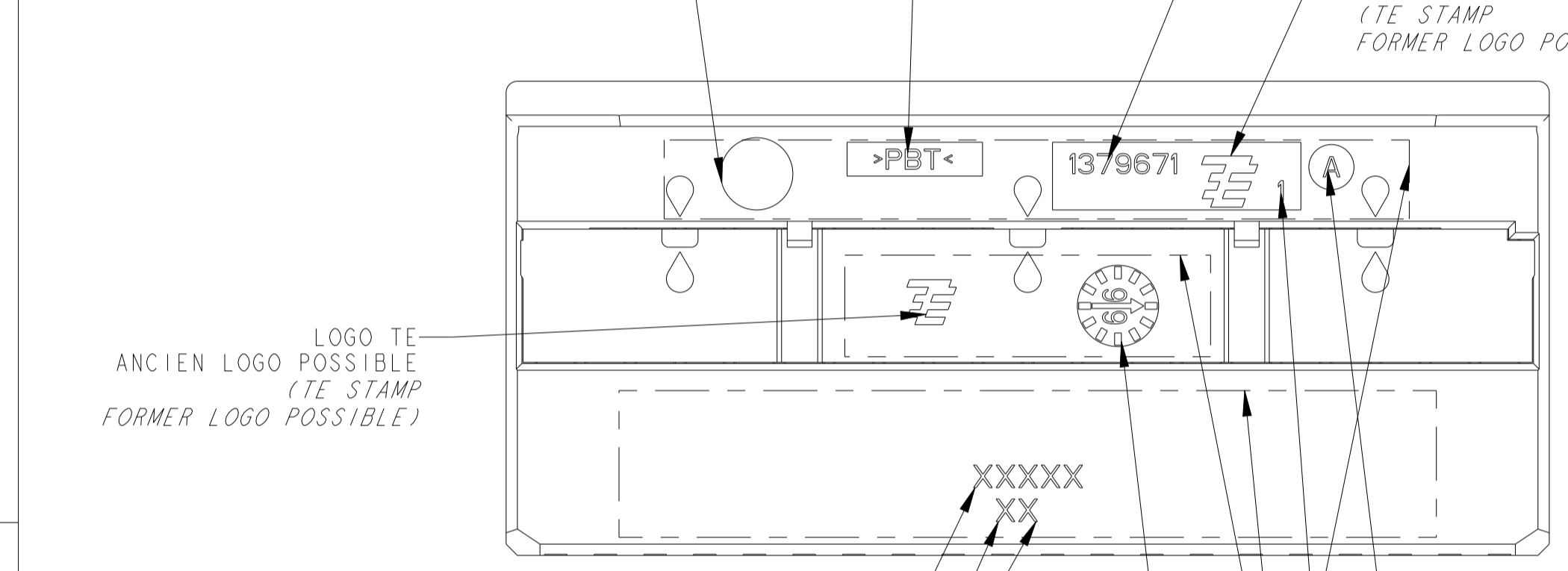


VERROU SECONDAIRE / RETAINER
ECHELLE 1:1 (SCALE)

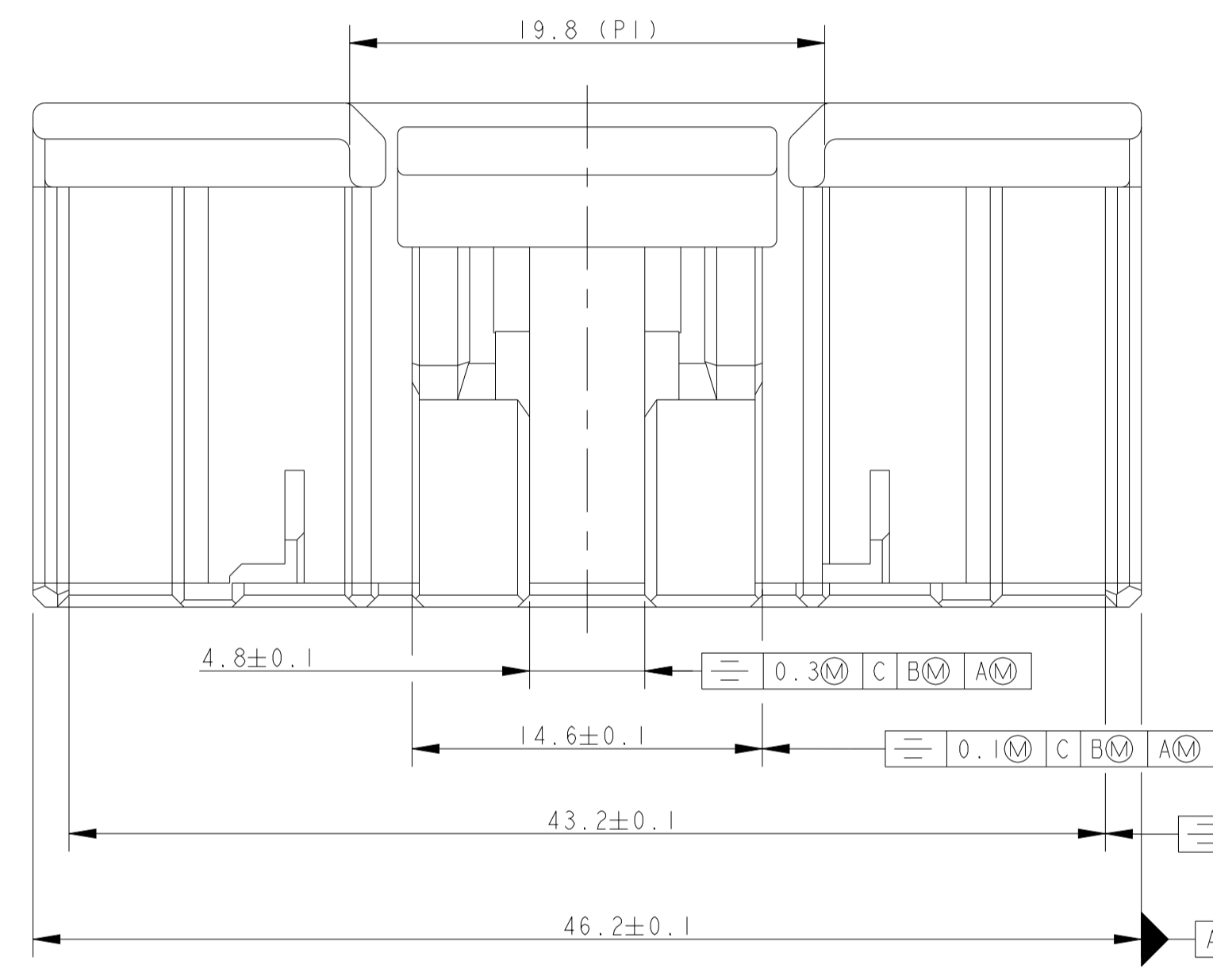
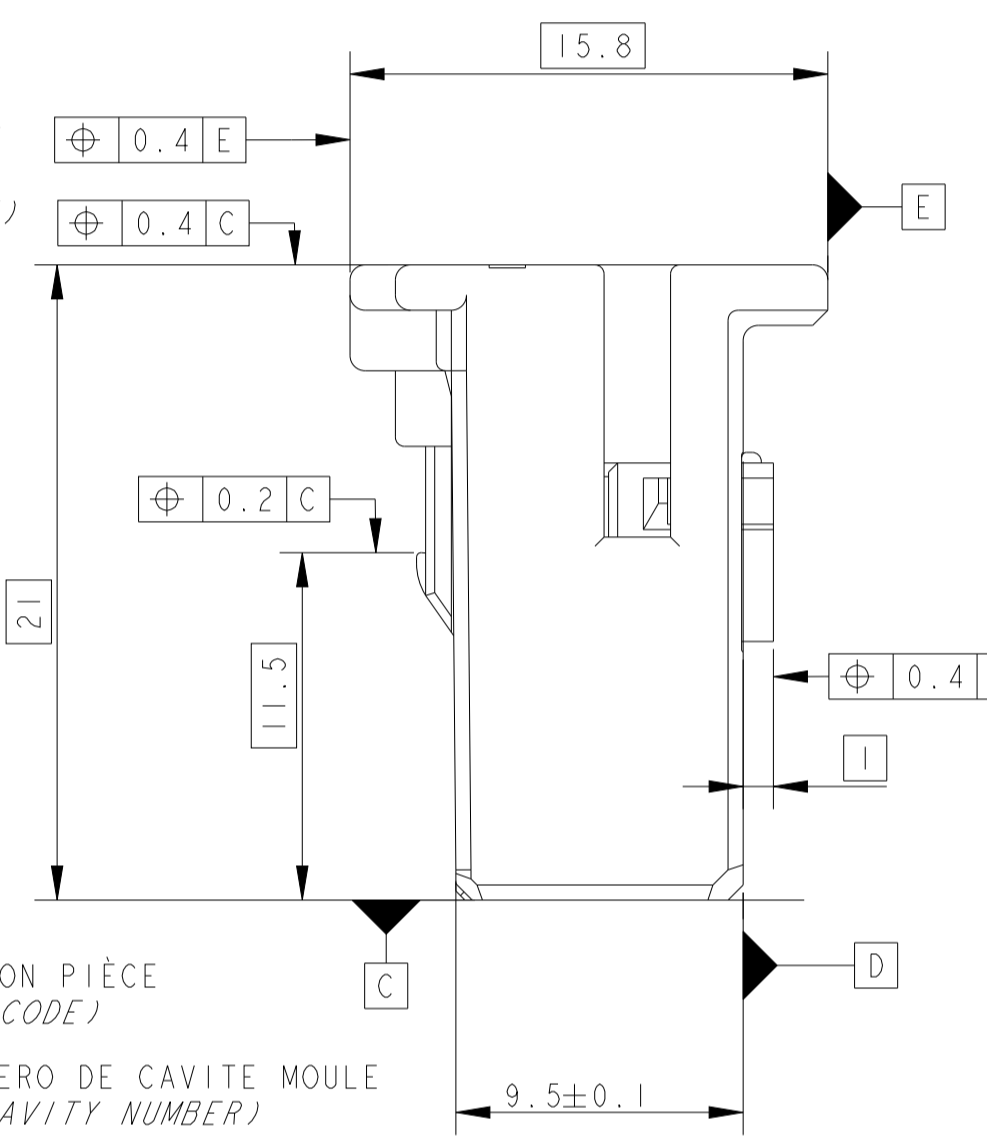
NOTES : LES NOTES LOCALES SONT ENTRE <->
 SPECIFICATIONS DE REFERENCE :
 2 SPECIFICATION TE : 108-15299
 4 PLAN D'INTERFACE TE : 1379779
 NOTES COMPLEMENTAIRES :
 12 CAHIER DE PRECONISATION : 411-15672
 13 REFERENCE REPRESENTEE : 1379671-1
 14 VERROU SECONDAIRE PREVERROUILLE (POSITION PREFERENTIELLE DE LIVRAISON). SI LE VERROU N'EST PAS DANS CETTE POSITION, SUIVRE LES INSTRUCTIONS DE LA NOTICE TECHNIQUE TYCO 411-15672 §8.2
 15 LES DIFFERENTES VERSIONS SONT LIVREES DE FACON ALEATOIRE POUR INFORMATION

LOCALE NOTES ARE BETWEEN <->
 APPLICABLE SPECIFICATION :
 TE SPECIFICATION : (SEE BEFORE)
 TE INTERFACE DRAWING : (SEE BEFORE)
 ADDITIONAL NOTES :
 INSTRUCTION SHEET : (SEE BEFORE)
 PART NUMBER SHOWN : (SEE BEFORE)
 SECONDARY LOCK IN PRELOCKED POSITION (PREFERED DELIVERY POSITION). IF SECONDARY LOCKING IS NOT IN THIS POSITION, FOLLOW INSTRUCTIONS OF TYCO SPECIFICATION 411-15672 §8.2
 THE DIFFERENT VERSIONS ARE DEVILERED SO RANDOM FOR REFERENCE ONLY

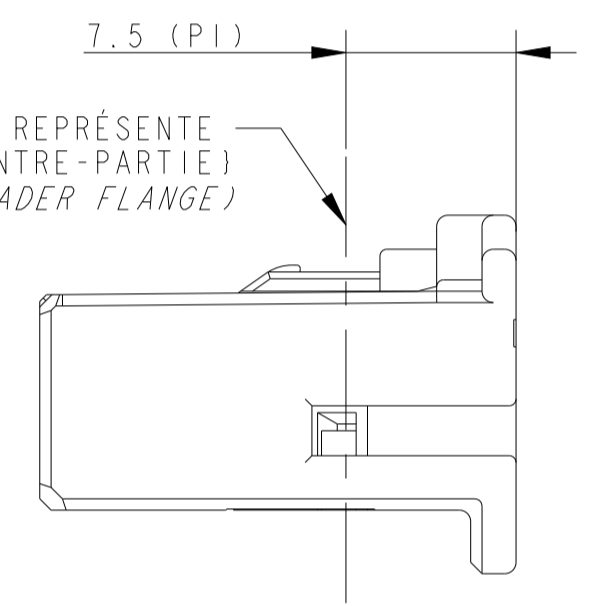
DATEUR BOITIER OPTIONNEL (MOIS-ANNEE)
 (HOUSING DATE CODE OPTIONAL (MONTH-YEAR))



LOGO TE ANCIEN LOGO POSSIBLE (TE STAMP FORMER LOGO POSSIBLE)
 DATE D'ASSEMBLAGE : ANNEE(2 CHIFFRES), SEMAINE(2 CHIFFRES), JOUR DE LA SEMAINE(1 CHIFFRE) (ASSEMBLY DATE CODE : YEAR(2 DIGITS), WEEK(2 DIGITS), WEEK DAY(1 DIGIT))
 REVISION ASSEMBLAGE (ASSEMBLY REVISION CODE)
 NUMERO DE CIRCUIT (CIRCUIT NUMBER)

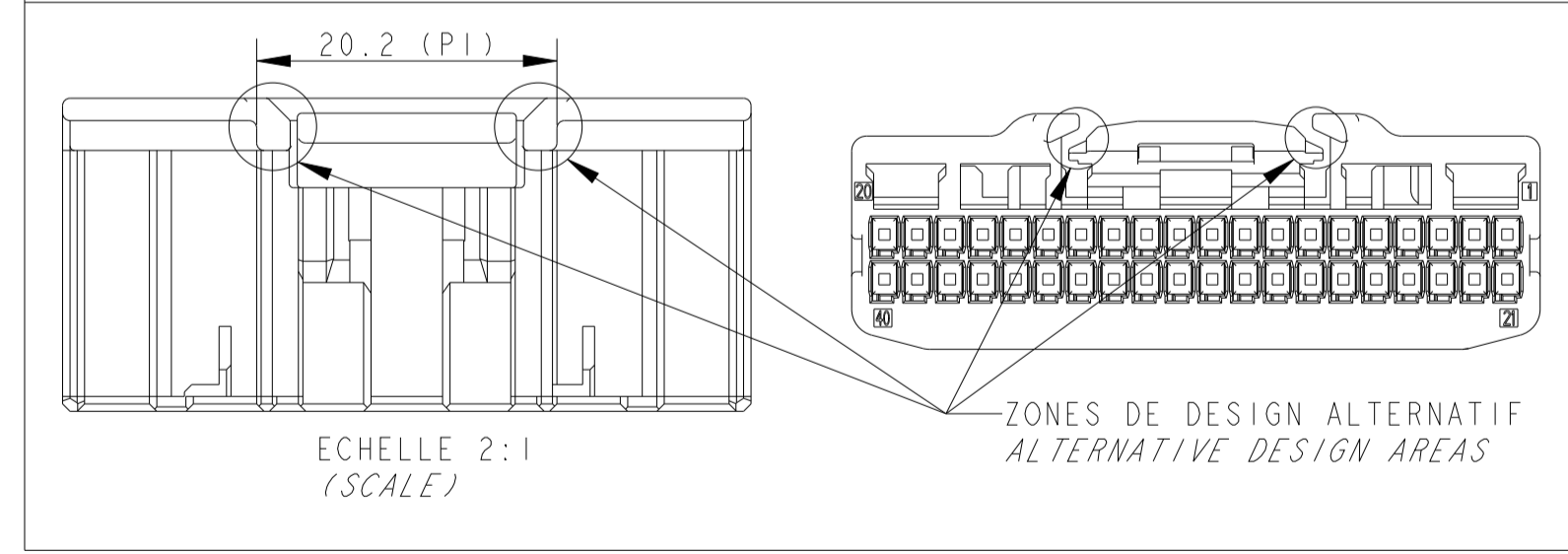


CETTE LIGNE REPRESENTE LE HAUT DE LA CONTRE-PARTIE (THIS LINE REPRESENTS THE HEADER FLANGE)



VERROU SECONDAIRE EN POSITION VÉROUILLE
 ECHELLE 3:1 (RETAINER IN IN CLOSED POSITION) (SCALE 3:1)

DESIGN POSSIBLE AVEC FONCTION ANTI OVERSTRESS DE LA LANCE, VOIR NOTE 15 (ALTERNATE DESIGN WITH ANTI OVERSTRESS FUNCTION OF THE LATCH, SEE NOTA 15)



CONTACTS ASSOCIES LISTE NON EXHAUSTIVE (APPLIED CONTACTS NON EXHAUSTIVE LIST)

REF TE (TE PN)	FINITION (FINISH)	DESIGNATION (DESIGNATION)
1123343-2	DORE (0.38µm) / GOLDED (0.38µm)	CLIP .635 (.635 CONTACT) 0.35 A 0.5 MM ² (SOMM)
1801069-2	DORE (0.8µm) / GOLDED (0.8µm)	CLIP .635 (.635 CONTACT) 0.35 A 0.5 MM ² (SOMM)
1123343-1	ETAME (TINNED)	CLIP .635 (.635 CONTACT) 0.35 A 0.5 MM ² (SOMM)

REF TE / TE PN	DESCRIPTION / DESCRIPTION	CODAGE / KEYING	MATIERE BOITIER - MATIERE VERROU SECONDAIRE / HOUSING MATERIAL - RETAINER MATERIAL	COULEUR BOITIER - COULEUR VERROU SECONDAIRE / HOUSING COLOR - RETAINER COLOR	REVISION ASSEMBLAGE / ASSEMBLY REVISION CODE
1379671-5	CONNECTEUR 40 VOIES / 40 WAY CONNECTOR	NEUTRE / NEUTRAL	PBT-PBT / PBT-PBT	NATUREL-NATUREL / NATURAL-NATURAL	B
1379671-4	CONNECTEUR 40 VOIES / 40 WAY CONNECTOR	4 / 4	PBT-PBT / PBT-PBT	VERT-NATUREL / GREEN-NATURAL	B
1379671-3	CONNECTEUR 40 VOIES / 40 WAY CONNECTOR	3 / 3	PBT-PBT / PBT-PBT	BLEU-NATUREL / BLUE-NATURAL	B
1379671-2	CONNECTEUR 40 VOIES / 40 WAY CONNECTOR	2 / 2	PBT-PBT / PBT-PBT	GRIS-NATUREL / GREY-NATURAL	B
1379671-1	CONNECTEUR 40 VOIES / 40 WAY CONNECTOR	1 / 1	PBT-PBT / PBT-PBT	NOIR-NATUREL / BLACK-NATURAL	B

THIS DRAWING IS A CONTROLLED DOCUMENT. CE PLAN EST UN DOCUMENT CONTROLÉ PAR TYCO ELECTRONICS. IL EST SPECIFIQUE D'UNE VERSION. CONTACTER LE SERVICE TECHNIQUE DE TYCO ELECTRONICS POUR OBTENIR LA DERNIERE REVISION.

OWN / RESINE: 25NOV2002
 C. ROUZE
 CHK / PREPTE: 29NOV2002
 B. DUPONT

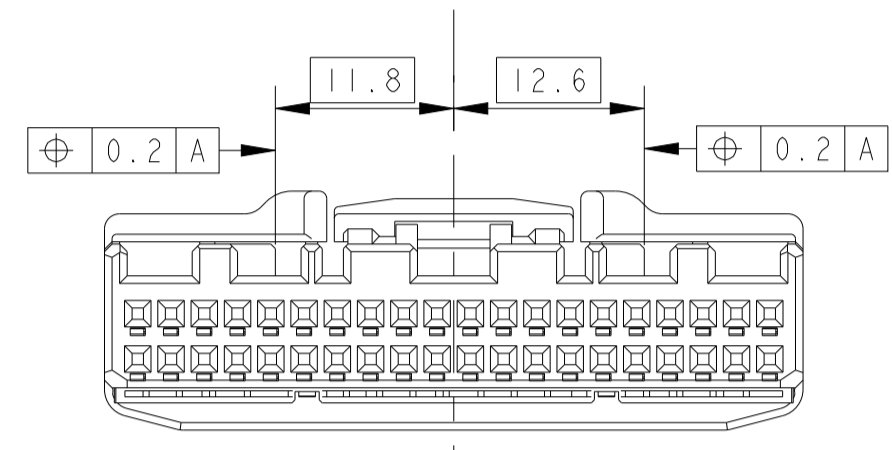
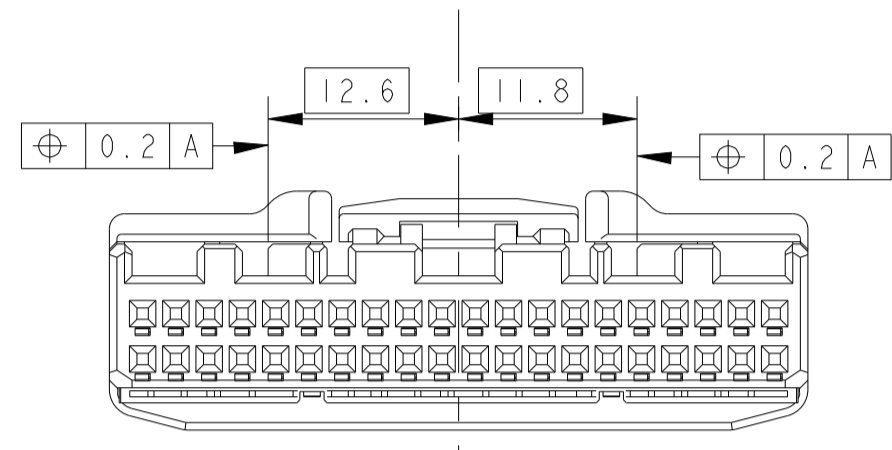
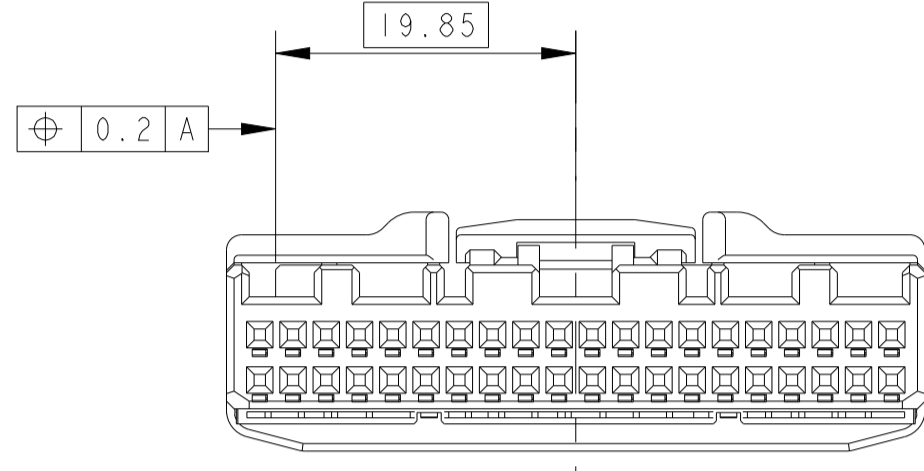
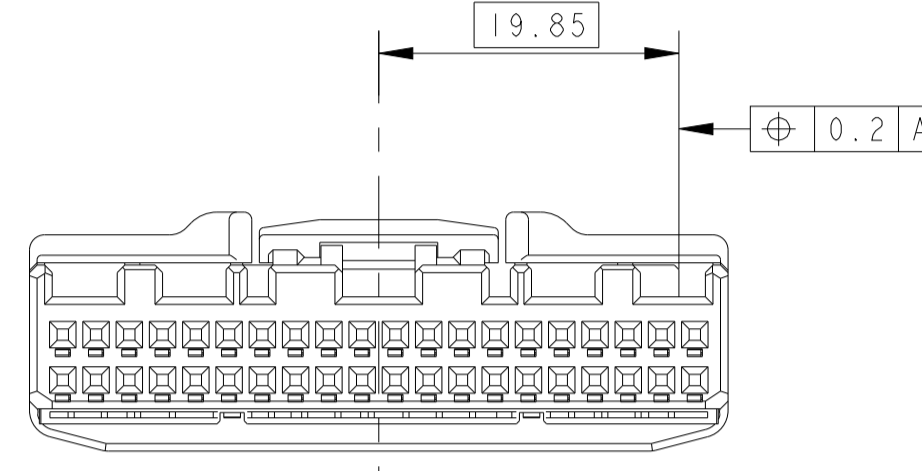
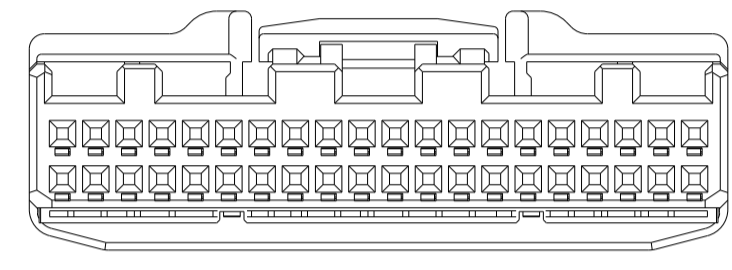
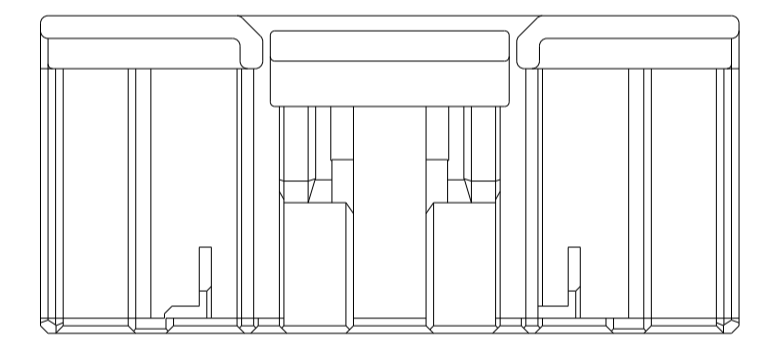
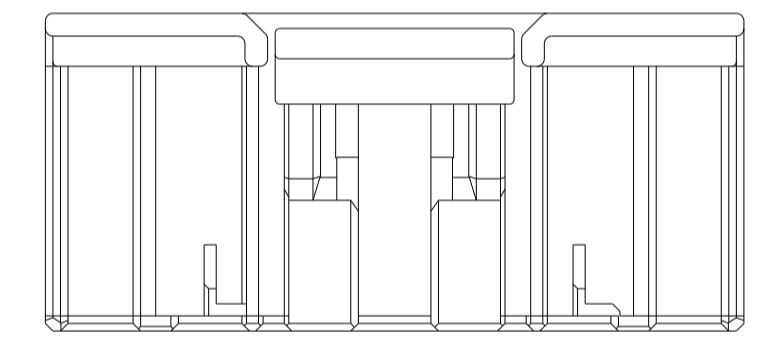
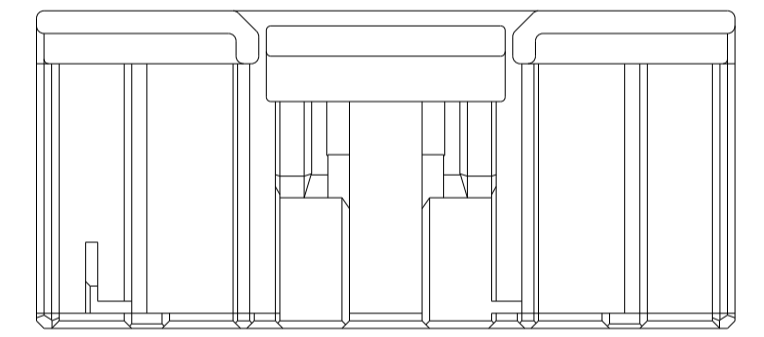
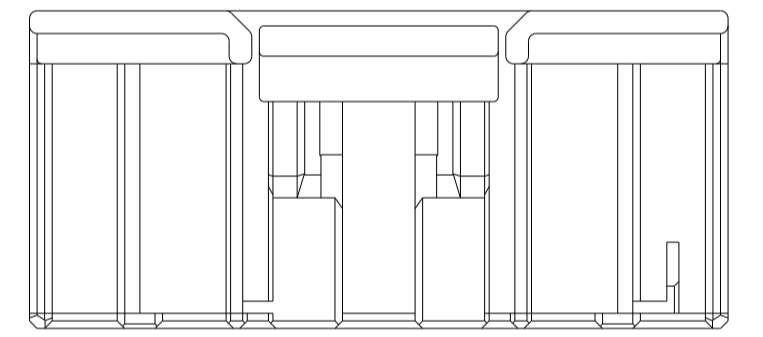
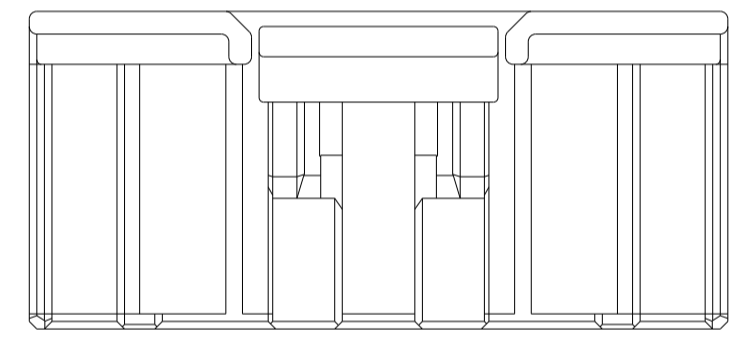
APVD / APPROVE: 04DEC2002
 JP. PICAUD
 PRODUCT SPEC: SEE TABLE
 SPEC. PRODUCT: SEE TABLE
 APPLICATION SPEC: SEE TABLE
 SPEC. APPLICATION: SEE TABLE

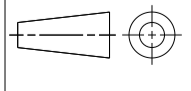
NAME: 025 TH 40 POS PLUG HOUSING
 TYPE: -
 SIZE: A1
 CAGE CODE: 00779
 DRAWING NO: 1379671
 IN PLAN: -
 RESTRICTED TO: RESERVE A

WEIGHT: 5.6g
 MASSE APPROX.: 5.6g

Customer Drawing / PLAN CLIENT UNIFORMEMENT POUR REFERENCE
 SCALE: 4:1
 SHEET: 1 OF 2
 REV: F

LOC		DIST		REVISIONS			
P	LTN	REV	DESCRIPTION	DATE	DWN	APPV	
F		00	SEE SHEET 1				

PN 1379671-1	PN 1379671-2	PN 1379671-3	PN 1379671-4	PN 1379671-5
CODAGE 1 (NOIR) KEYING 1 (BLACK)	CODAGE 2 (GRIS) KEYING 2 (GRAY)	CODAGE 3 (BLEU) KEYING 3 (BLUE)	CODAGE 4 (VERT) KEYING 4 (GREEN)	CODAGE NEUTRE (NATUREL) NEUTRAL KEYING (NATURAL)
 <p>ECHELLE 2:1 (SCALE)</p>	 <p>ECHELLE 2:1 (SCALE)</p>	 <p>ECHELLE 2:1 (SCALE)</p>	 <p>ECHELLE 2:1 (SCALE)</p>	 <p>ECHELLE 2:1 (SCALE)</p>
				

THIS DRAWING IS A CONTROLLED DOCUMENT. CE PLAN EST UN DOCUMENT CONTROLÉ PAR TOUTE ÉLECTRONIQUE. IL EST SOUSCRIPTION À TOUTE ÉLECTRONIQUE. CONSULTER LE SERVICE TECHNIQUE DE TOUTE ÉLECTRONIQUE POUR OBTENIR LA DERNIÈRE RÉVISION.		DWN / REVISION: 25NOV2002 C. ROUZE CHK / PREPARE: 29NOV2002 B. DUPONT		APVD / APPROVE: 04DEC2002 JP. PICAUD PRODUCT SPEC SPEC. PRODUCT SEE TABLE APPLICATION SPEC SPEC. APPLICATION SEE TABLE		NAME: 025 TH 40 POS PLUG HOUSING -	
DIMENSIONS: mm 		TOLERANCES UNLESS OTHERWISE SPECIFIED: (SUIVANT LE DÉCAIMALES): 0 P.L.C./DEC: ±0.2 1 P.L.C./DEC: ±0.2 2 P.L.C./DEC: ±0.2 3 P.L.C./DEC: ±0.2 4 P.L.C./DEC: ±0.2 ANGLES: ±0.2 FINISH / FINITION: -		SIZE: A1 CAGE CODE: 00779 DRAWING NO: 1379671 IN PLAN: - WEIGHT: 5.6g MASSE APPROX.: -		RESTRICTED TO RESERVE A -	
MATERIAL / MATIÈRE: SEE TABLE		CUSTOMER DRAWING / PLAN CLIENT		UNIFORMITY / ÉCHELLE: 4:1		SHEET / FEUILLE: 2 OF 2	