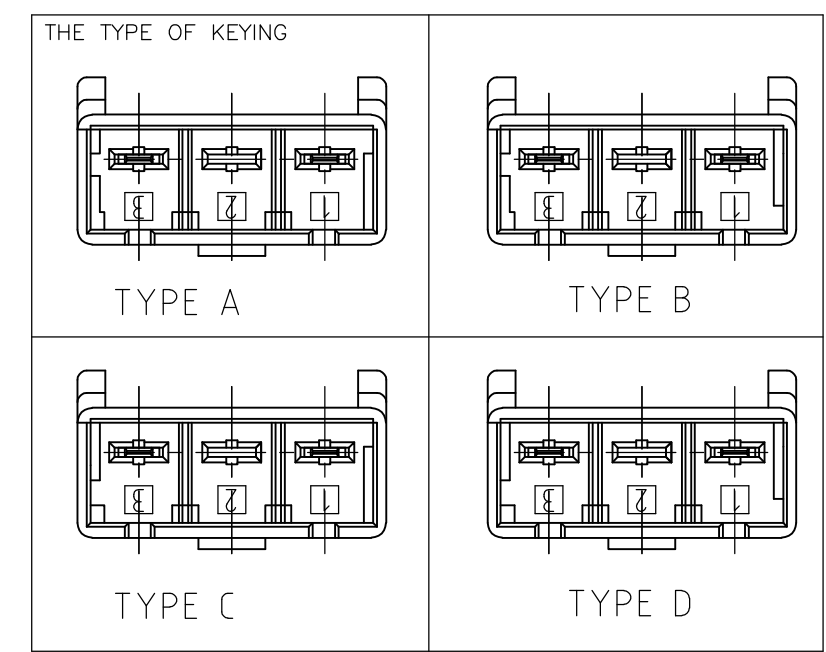
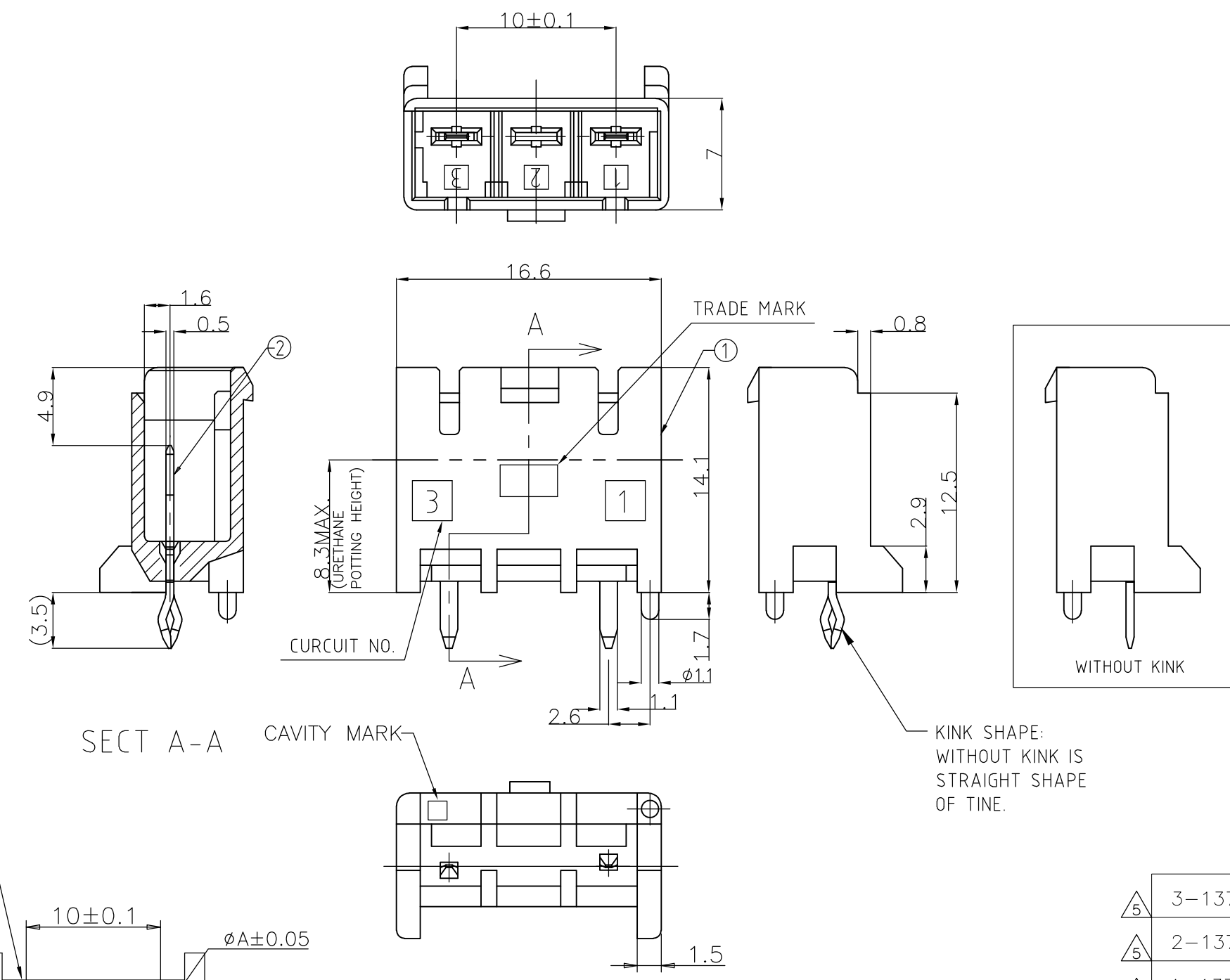
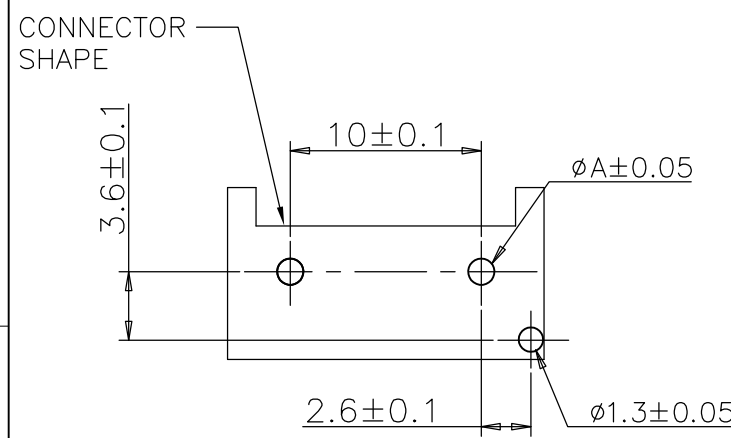


THIS DRAWING IS UNPUBLISHED. RELEASED FOR PUBLICATION
 © COPYRIGHT - By - ALL RIGHTS RESERVED.

REVISIONS					
P	LTR	DESCRIPTION	DATE	DWN	APVD
	B3	REVISED PER ECR-16-007444	28MAY2016	NK	SC



NO.	NAME	MATERIAL
②	HEADER HOISING	6/6 NYLON GRASS FILLED
①	TAB	COPPER ALLOY TIN PLATED



- ① RECOMMENDED P.C.B LAY OUT.
- 2 APPLICABLE P.C.B. THICKNESS:1.6.
- ③ MATING CONN. P/N PLUG HOUSING :SEE TABLE.
- 4 PARTS MEET IEC 60335-1 (GWT GLOW WIRE TEST 750 DEGREE SPEC).
- ⑤ NYLON 66, GWT, V-0.

PUNCHING	1.25
DRILLING	1.4
	DIM A

① RECOMMENDED PCB HOLES

⑤	3-1376389-4	WITH KINK	TYPE D	YELLOW	3Pos	3-1376421-4
⑤	2-1376389-3	WITH KINK	TYPE C	BLUE	3Pos	2-1376421-3
⑤	1-1376389-2	WITH KINK	TYPE B	RED	3Pos	1-1376421-2
⑤	1376389-1	WITH KINK	TYPE A	NATURAL	3Pos	1376421-1
	MATING CONN. P/N	③ WITH/WITHOUT KINK	TYPE OF KEYING	Color	Pos	PART NO.

THIS DRAWING IS A CONTROLLED DOCUMENT.

DIMENSIONS: mm	TOLERANCES UNLESS OTHERWISE SPECIFIED:	DWN A.OISHI 28AUG'00	STE TE Connectivity			
	0 PLO ± 0.2	CHK Y.KASHIWA 28AUG'00				
	1 P/C ±	APVD Y.KASHIWA 28AUG'00	NAME			
	2 P/C ±	PRODUCT SPEC	5.0 POWER KEY CONNECTOR 10MM PITCH 2P HEADER ASSEMBLY			
	3 P/C ±	APPLICATION SPEC	SIZE	CAGE CODE	DRAWING NO	RESTRICTED TO
	4 PLO ANGLES ± 1°	WEIGHT	A3	00779	C-1376421	-
MATERIAL SEE TABLE	FINISH SEE TABLE	CUSTOMER DRAWING	SCALE	SHEET	REV	
			3:1	1 OF 1	B3	