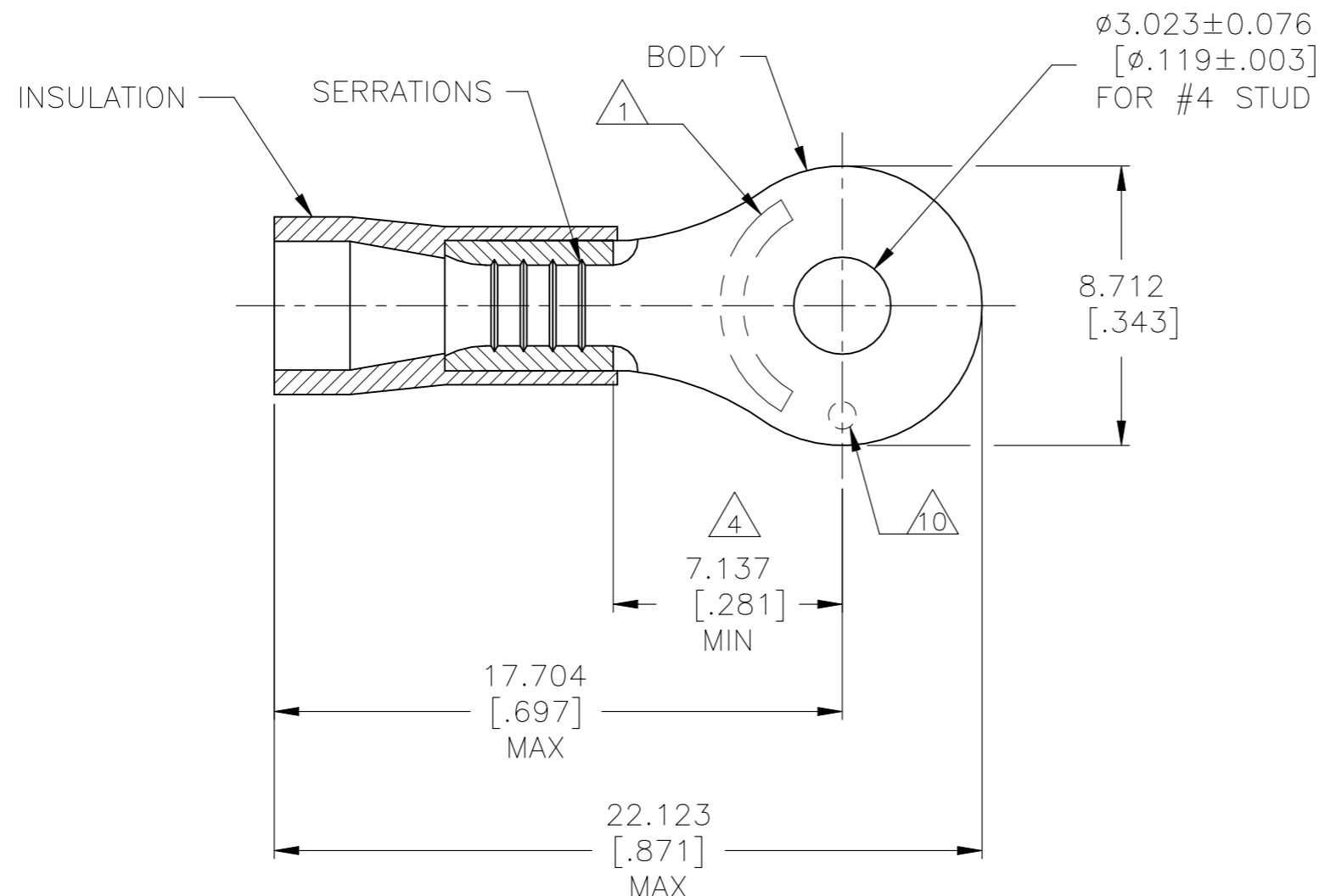


| REVISIONS |     |                           |           |        |
|-----------|-----|---------------------------|-----------|--------|
| P         | LTR | DESCRIPTION               | DATE      | APVD   |
| E         |     | REVISED PER ECR-23-181664 | 04AUG2023 | AP DSC |



- 1 STAMP AMP 16-14\* APPROX AS SHOWN
- 2 WIRE INSULATION DIAMETER:  $\phi 2.667[.105]$  TO  $\phi 3.556[.140]$
- 3 BODY MATERIAL THK:  $0.787\pm 0.051[.031\pm.002]$
- 4 APPLIES FROM EDGE OF METAL WIRE BARREL TO CENTER OF STUD HOLE
- 5 NOTE DELETED
- 6 NOTE DELETED
- 7 NOTE DELETED
- 8 MATERIAL:  
BODY - COPPER PER ASTM B152  
INSULATION - PVC
- 9 FINISH:  
BODY - TIN PLATE  $0.00254[.000100]$   
MIN EXT THK PER ASTM B545  
INSULATION COLOR - BLUE
- 10 DIMPLE STAMP MARK OPTIONAL

|                                |                                |                                |
|--------------------------------|--------------------------------|--------------------------------|
| <b>AMP</b><br>WIRE RANGE       | E13288<br>Listed               | LR7189<br>Certified            |
| 16-14 AWG<br>SOLID OR STRANDED | 16-14 AWG<br>SOLID OR STRANDED | 16-14 AWG<br>SOLID OR STRANDED |

|                |           |      |            |
|----------------|-----------|------|------------|
| TAPE & REEL    | STANDARD  | 4000 | 2-130416-1 |
| PACKAGING TYPE | LABELLING | QTY  | PART NO    |

|  |  |  |  |   |                                 |                           |                    |                        |                    |
|--|--|--|--|---|---------------------------------|---------------------------|--------------------|------------------------|--------------------|
| AMP INCORPORATED<br>CUSTOMER SERVICE SYSTEMS                                     |  | MAX RECOMMENDED OPERATING TEMPERATURE:<br>105°C [221°F]  | THIS DRAWING IS A CONTROLLED DOCUMENT. |   | DWN<br>jr_ruth<br>06DEC05       | TE Connectivity           |                    |                        |                    |
| FOR ADDITIONAL PRODUCT INFORMATION OR COPIES OF DRAWINGS AND TECHNICAL DOCUMENTS | PRODUCT INFORMATION CENTER<br>1-800-522-6752 | VOLTAGE RATING:<br>600 V MAX<br>[1000V SIGNS OR FIXTURES]  | DIMENSIONS:<br>mm [INCHES]             | TOLERANCES UNLESS OTHERWISE SPECIFIED:  | CHK<br>T MICHELUTTI<br>06DEC05  |                           |                    |                        |                    |
| FOR APPLICATION TOOLING INFORMATION  | TOOLING ASSISTANCE CENTER<br>1-800-722-1111  | WIRE CROSS SECTIONAL AREA RANGE:<br>1.04-2.62mm <sup>2</sup> [2050-5180]<br>SOLID OR STRANDED  |  | 0 PLC ± -<br>1 PLC ± -<br>2 PLC ± -<br>3 PLC ± 0.127[.005]<br>4 PLC ± - ± -<br>ANGLES | APVD<br>T MICHELUTTI<br>06DEC05 | PRODUCT SPEC<br>UL 486A-B |                    |                        |                    |
| FOR ORDER ENTRY  | 1-800-526-5142                               | THIS DRAWING IS A CONTROLLED DOCUMENT FOR AMP INCORPORATED. IT IS SUBJECT TO CHANGE AND THE CONTROLLING ENGINEERING ORGANIZATION SHOULD BE CONTACTED FOR THE LATEST REVISION | MATERIAL                               | FINISH  | APPLICATION SPEC<br>114-2161    | SIZE<br>A3                | CAGE CODE<br>00779 | DRAWING NO<br>C-130416 | RESTRICTED TO<br>- |
| CUSTOMER DRAWING   |  |  |  |   |                                 | SCALE<br>5:1              | SHEET<br>1 OF 1    | REV<br>E               |                    |