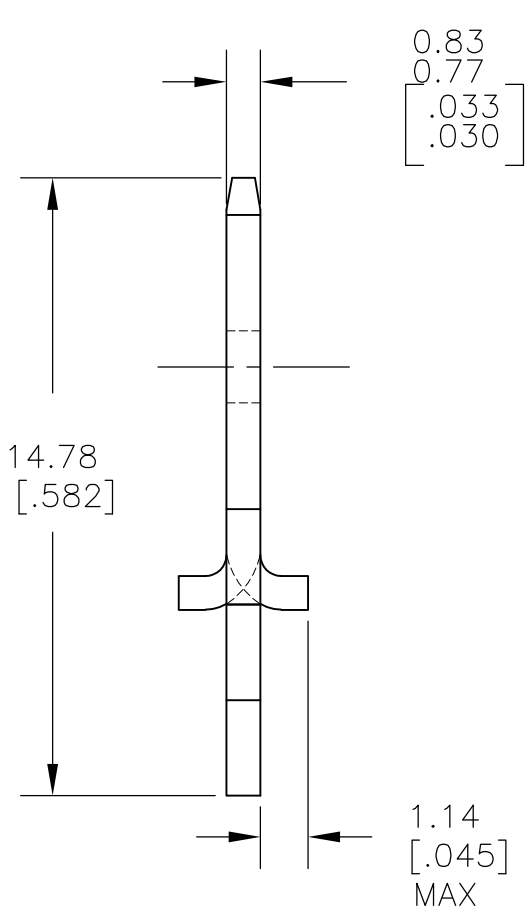
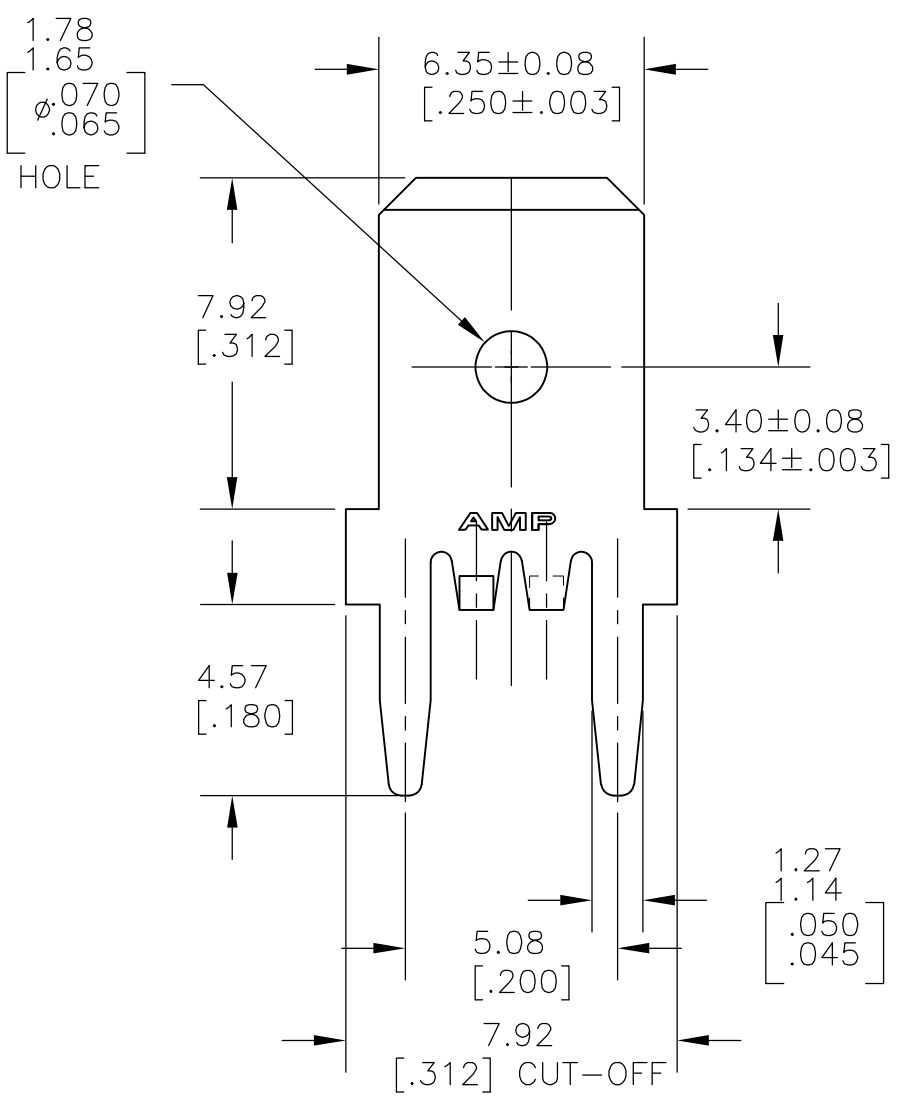
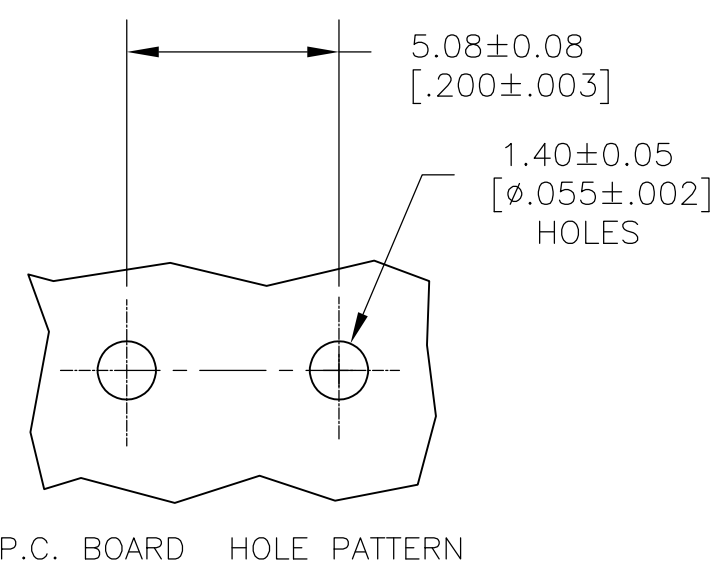


LOC	DIST	REVISIONS					
AF	50	P	LTR	DESCRIPTION	DATE	DWN	APVD
		G1		REVISED PER ECR-15-002109	11FEB2015	NK	DC



- 1 CONTINUOUS STRIP ON REELS.
- △2 TIN PLATE 0.00381 [.000150] MIN OVER 0.00254 [.000100] MIN THK COPPER OR TIN PLATE 0.00381 [.000150] MIN OVER 0.00127 [.000050] MIN THK NICKEL.
- △3 REELED WITH INTERLEAVE PAPER



ACC. TO TE SPEC. 107-3 FIG. 318	△3 1217136-3
ACC. TO TE SPEC. 107-3 FIG. 918	1217136-2
ACC. TO TE SPEC. 107-3 FIG. 318	1217136-1
REELING	PART NO.

THIS DRAWING IS A CONTROLLED DOCUMENT.		DWN	JR RUTH	28MAR01	STE TE Connectivity													
DIMENSIONS: mm[INCHES]		CHK	MS FEHER	28MAR01														
TOLERANCES UNLESS OTHERWISE SPECIFIED:		APVD	N DEIBERT	28MAR01	NAME													
<table border="0"> <tr><td>0 PLC</td><td>± -</td></tr> <tr><td>1 PLC</td><td>± -</td></tr> <tr><td>2 PLC</td><td>± 0.25 [.010]</td></tr> <tr><td>3 PLC</td><td>± -</td></tr> <tr><td>4 PLC</td><td>± -</td></tr> <tr><td>ANGLES</td><td>± -</td></tr> </table>		0 PLC	± -	1 PLC	± -	2 PLC	± 0.25 [.010]	3 PLC	± -	4 PLC	± -	ANGLES	± -	PRODUCT SPEC		TAB, FASTON, P.C.BOARD		
0 PLC	± -																	
1 PLC	± -																	
2 PLC	± 0.25 [.010]																	
3 PLC	± -																	
4 PLC	± -																	
ANGLES	± -																	
MATERIAL		APPLICATION SPEC		DRAWING NO														
BRASS		114-2115		SIZE	CAGE CODE	DRAWING NO	RESTRICTED TO											
FINISH		WEIGHT		A3	00779	C-1217136	-											
△2		CUSTOMER DRAWING		SCALE	6:1	SHEET	1 OF 1											
						REV	G1											