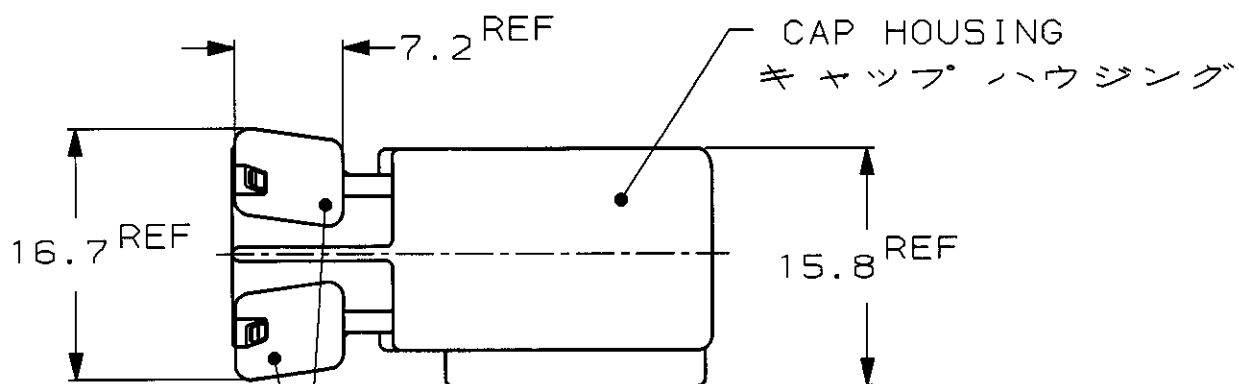
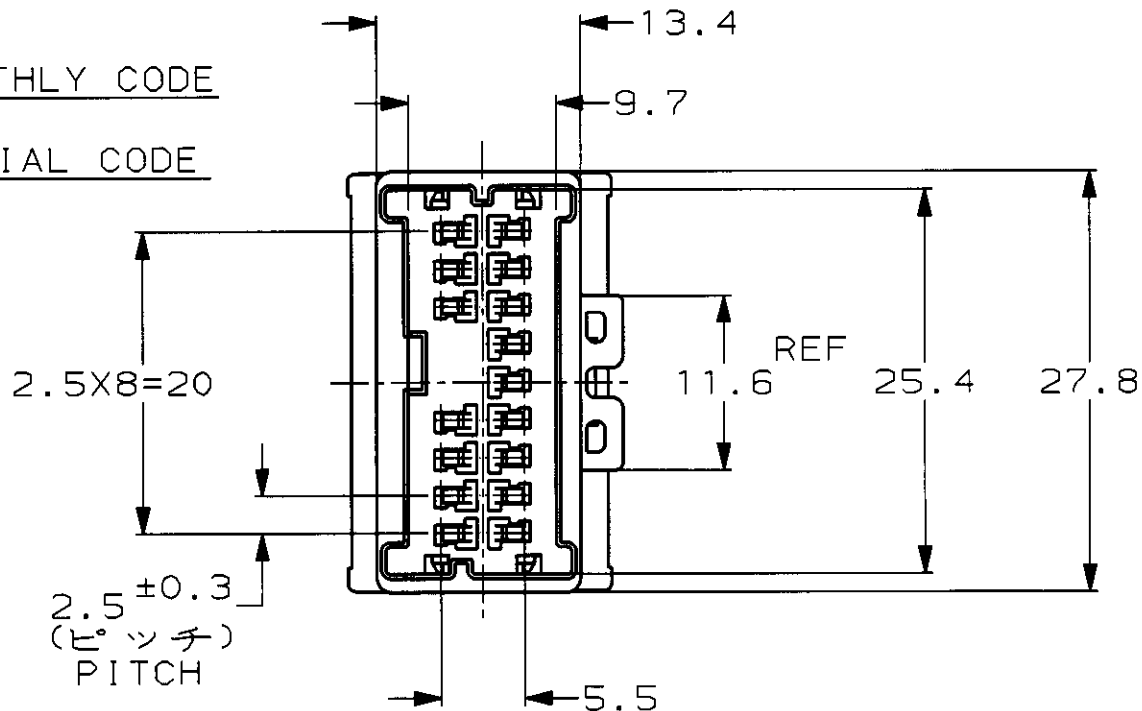
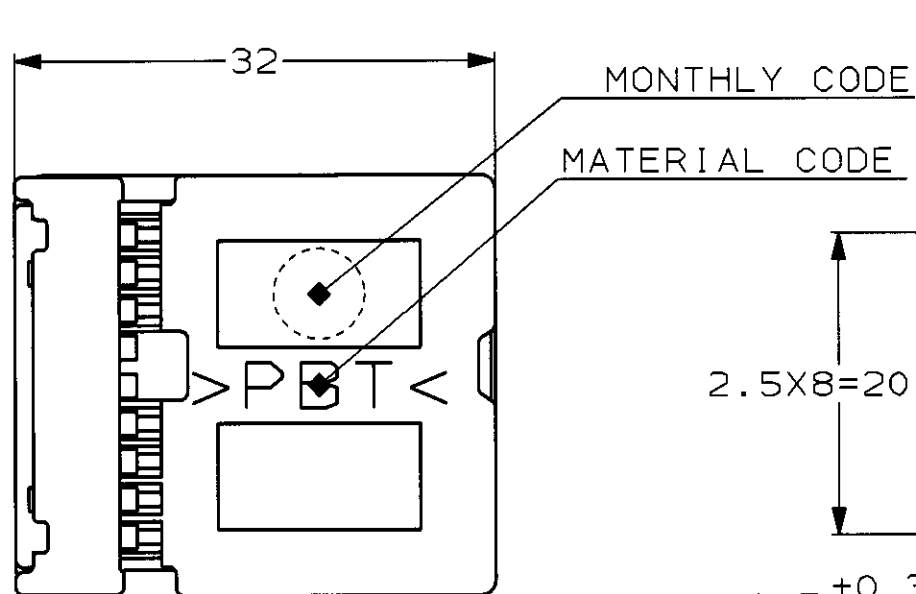
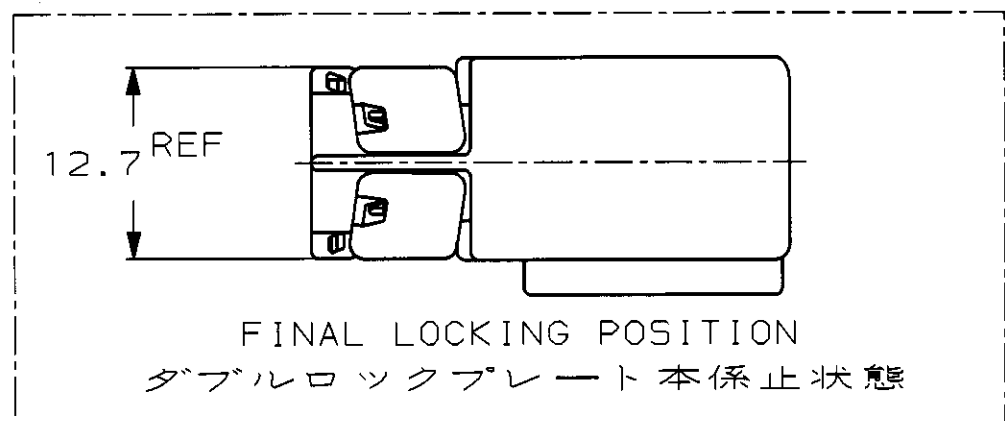


P	LTR	DESCRIPTION	ECN	DATE	DWN	APVD
	A	再作成 REDRAWN	FJ00-0506-98	10APR98	TM	MT
	B	変更 REVISED	FJ00-1797-99	29OCT99	KS	MT
	C	変更 REVISED	FJ00-2112-99	08DEC99	KS	MT



DOUBLE LOCK PLATE (NATURAL)
ダブルロックプレート (自然色)



1123375-3	353537-1 353537-2 (Au)	茶色 (BROWN)	1123353-3
嵌合相手ハウジング型番 MATING HOUSING PART NUMBER	適用端子型番 APPLICABLE CONTACT PART NUMBER	色 (COLOR)	型番 PART NUMBER
<small>THIS DRAWING IS A CONTROLLED DOCUMENT FOR AMP INCORPORATED. IT IS SUBJECT TO CHANGE AND THE CONTROLLING ENGINEERING ORGANIZATION SHOULD BE CONTACTED FOR THE LATEST REVISION.</small>		AMP 日本エー・エム・シー株式会社 Kawasaki, Japan	
DIMENSIONS: 単位: 概 mm		TOLERANCES UNLESS OTHERWISE SPECIFIED 一般公差: 10% ±0.2 30% ±0.25 100% ±0.3 ANGLE: ±0.3°	
MATERIAL 材料 PBT		FINISH 仕上	
CHECKED BY: T. MINEMATSU E. SASAKI APPROVED BY: M. TSUKAKOSHI		NAME: 040III MULTILOCK CONNECTOR 16POSITION CAP HOUSING ASSEMBLY (WIRE TO WIRE) 040III マルチロック コネクタ 16極 キャップハウジング アッセンブリ (対電線用)	
PRODUCT SPEC: 108-5607 APPLICATION SPEC: 114-5228		SIZE: A3 CAGE CODE: 00779 DRAWING NO: 1123353	
WEIGHT: 7.1g		RESTRICTED TO: -	
CUSTOMER DRAWING		SCALE: 2:1 SHEET: 1 OF 1 REV: C	