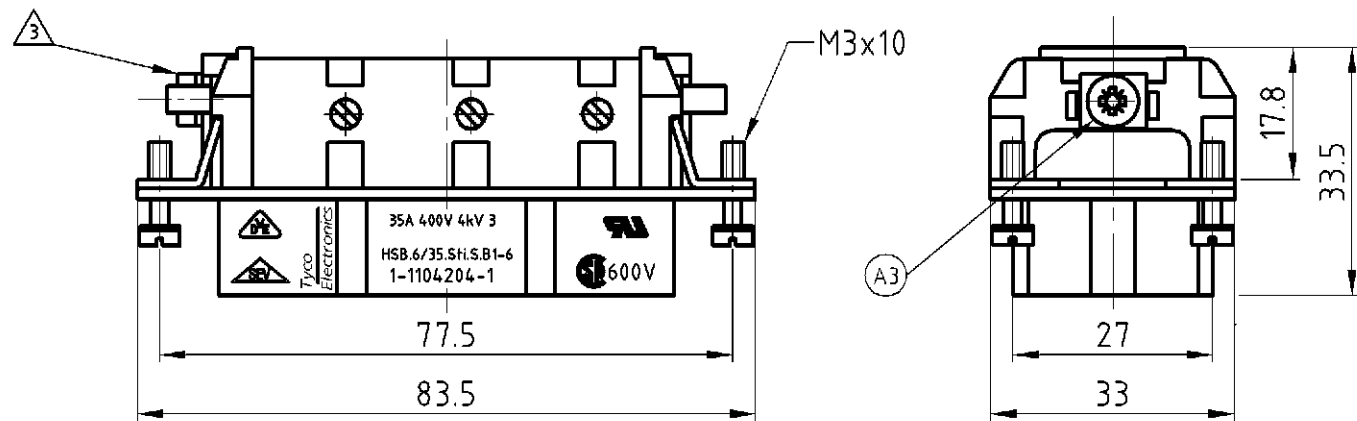


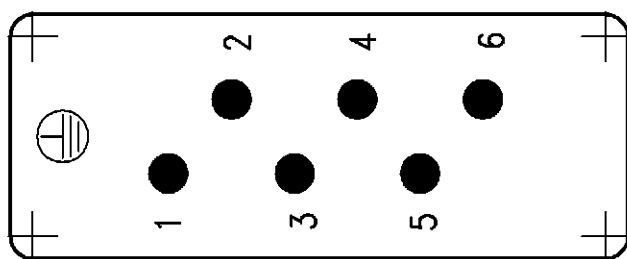
| LOC | DIST | REVISIONS ÄNDERUNGEN | | | | | |
|--------------|------|-------------------------|---------------|-----------------------------|------|-----|------|
| A1 | - | P | LTR | DESCRIPTION BESCHREIBUNG | DATE | DWN | APVD |
| PROJEKT NR.: | | A4 | ECR-17-014051 | 04APR18 | SG | MKO | |



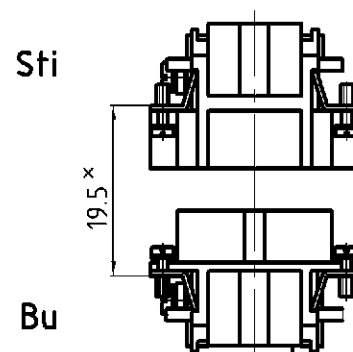
NOTES

- ① FINISH: CONTACT , AG
- ② POWER CONTACT: 1 TO 6
OUTER DIMENSIONS OF INSULATION: MAX. ϕ 7.0 MM
- ③ GROUNDING CONTACT
- ④ SUITABLE HOOD SIZE 6: SERIES HB; HD; EMV; HIP
- ⑤ STANDARDS:
DIN EN 61984; DIN EN 60664-1
- ⑥ PACKAGING: 5 PIECES IN A CARTON
- ⑦ PACKAGING: 270 PIECES IN A BOX

Contact arrangement view from termination side

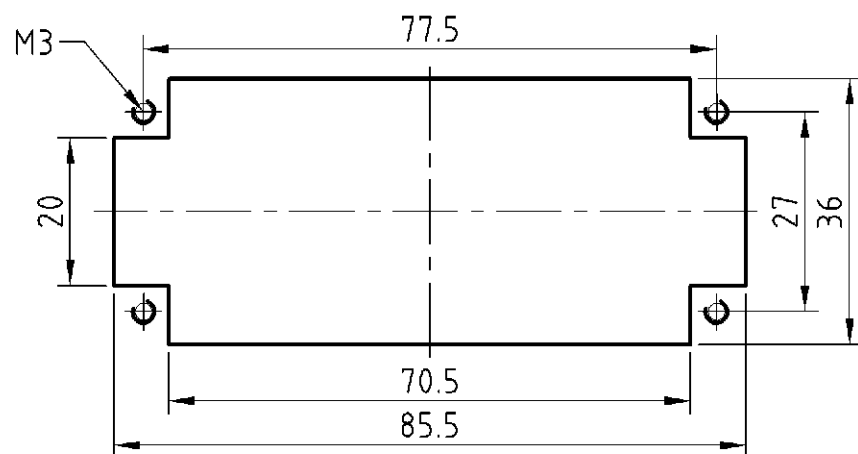


Assembling instruction



X Distance for guaranteed contact max: 21 mm

Panel cut-out for contact insert when used without housing



| 1 | 1 | DESCRIPTION | MATERIAL | COLOR | ITEM NO. POS. | REMARKS |
|----------------------------------|--------------------|---|---|---|---|---|
| 1 | 1 | Female insert | | beige | 1 | |
| SUPERSEDED BY T2060062201-000 | | <p>THIS DRAWING IS A CONTROLLED DOCUMENT FOR AMP INCORPORATED. IT IS SUBJECT TO CHANGE AND THE CONTROLLING ENGINEERING ORGANIZATION SHOULD BE CONTACTED FOR THE LATEST REVISION. DIESES ZEICHNUNGSDOKUMENT WIRD DURCH AMP INCORPORATED KONTROLLIERT. ÄNDERUNGEN, DIE DEM TECHNISCHEN FORTSCHRITT DIENEN, SIND VORBEHALTEN. DEN JEWELNS LETZTUELTIGEN ÄNDERUNGSSTAND ERFAHREN SIE AUF ANFRAGE.</p> | | DWN Schweiger 18.06.1997 | | |
| ① | ⑥ | DIMENSIONS: DIMENSIONEN mm | TOLERANCES UNLESS OTHERWISE SPECIFIED: ALLGEMEINTOLERANZEN p. ISO 8015 p. ISO 2768 - mH - E p. DIN 16901 - 140 | CHK Kramer 04.06.98 | NAME FEMALE INSERT HSB.6/35.Bu.S.B1-6 | |
| ① | ⑥ | MATERIAL | FINISH / OBERFLÄCHE / FARBE ① | APVD - | PRODUCT SPEC PRODUKTSPEZ. 108-74006 | SIZE A3 |
| ① | ⑥ | ORDERING TEXT / BESTELLTEXT | | APPLICATION SPEC VERARBEITUNGSSPEZ. 114-74007 | CAGE CODE 00779 | DRAWING NO ZEICHNUNGS-NR. C-1104205 |
| HSB.6/35.Bu.S.B1-6.KM | HSB.6/35.Bu.S.B1-6 | | | WEIGHT GEWICHT 90 g | RESTRICTED TO NUR FUER - | MATERIAL |
| | | | | CUSTOMER DRAWING | /KUNDENZEICHNUNG | MASSTAB 1:1 |
| | | | | | BLATT 1 | OF VON 1 |
| | | | | | REV A4 | |