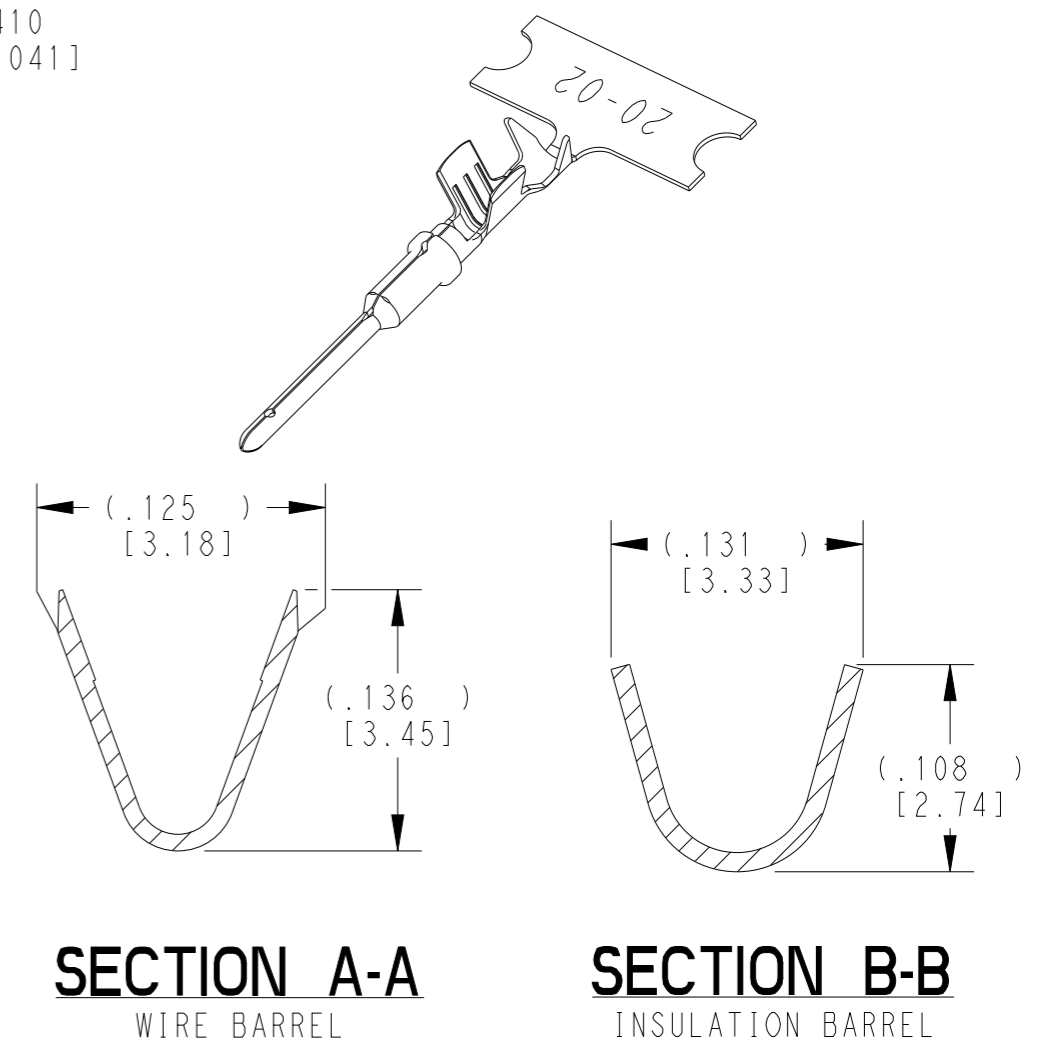
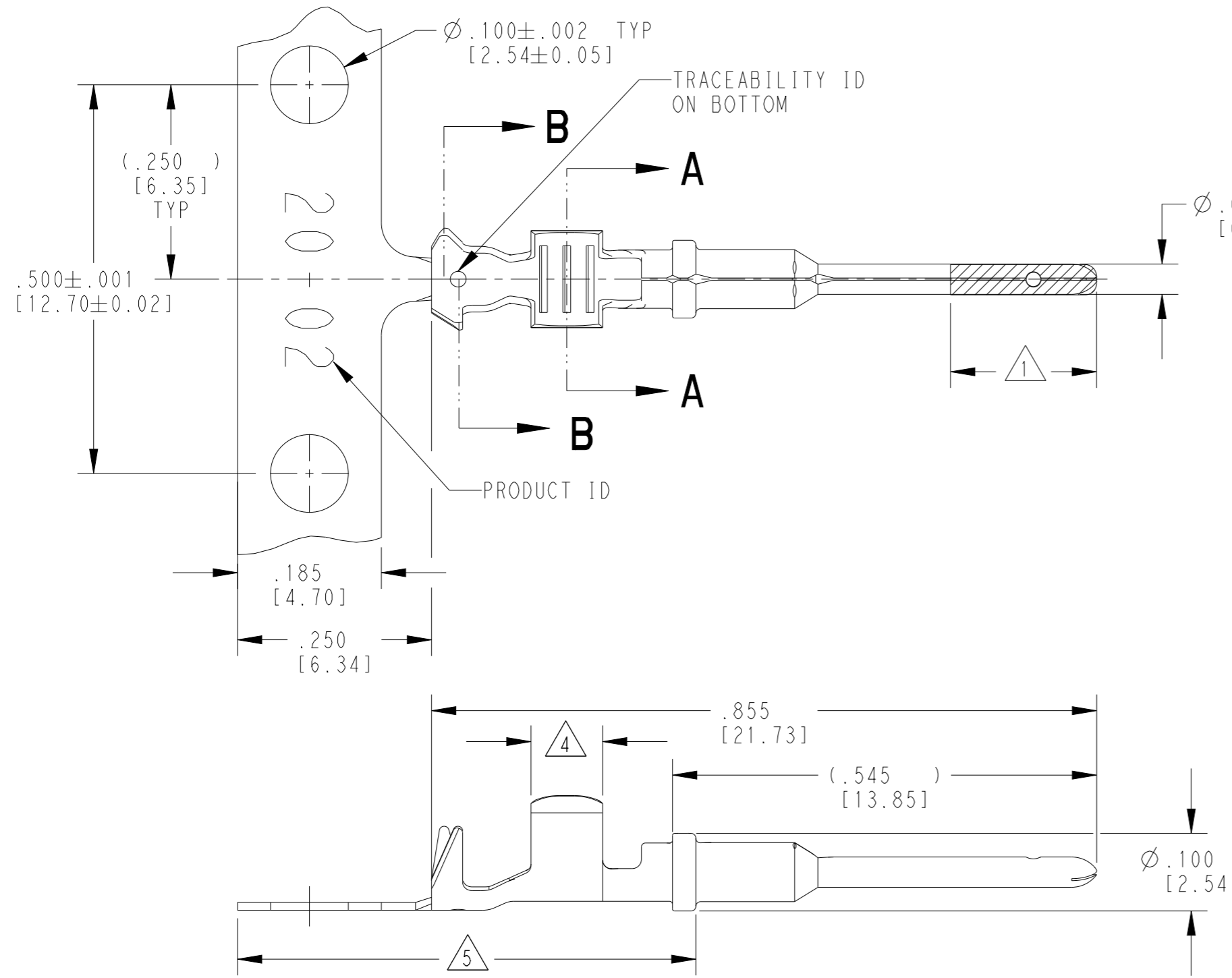


THIS DRAWING IS UNPUBLISHED. RELEASED FOR PUBLICATION 2018
 © COPYRIGHT 2018 BY - ALL RIGHTS RESERVED.

REVISIONS					
P	LTR	DESCRIPTION	DATE	DWN	APVD
D		REVISED PER E.O. P20392	03DEC2009		RDR
E		REVISED PER PCN E-18-007949	23MAY2018	DD	DM
F		REVISED PER PCN-24-210586	10JUN2024	PS	CB



- 5 TIN PLATING MAY BE IN THIS REGION.
- 4 TIN PLATED REGION.
- 3 MATERIAL: .010 [0.25] THICK COPPER ALLOY.
- 2 WIRE RANGE: 22 AWG TO 16 AWG [0.35-1.50 mm²].
INSULATION RANGE: Ø.051-.085 [Ø1.30-2.16].
- 1 GOLD PLATED REGION.

NOTES: UNLESS OTHERWISE SPECIFIED

TE INTERNAL PN	DEUTSCH PN	REV	PLATING
1060-20-0222	1060-20-0222	K	Ni/Cu Overall
1060-20-0244	1060-20-0244	K	Selective Au, Ni/Cu Overall, Sn/Ni/Cu Wire Barrel
1060-20-0277	1060-20-0277	K	Sn/Ni/Cu Overall

THIS DRAWING IS A CONTROLLED DOCUMENT.		DWN J. APOSTOL 01DEC2009	TE Connectivity	
		CHK D. MEYER 02DEC2009		
		APVD R. REED 03DEC2009	NAME STAMPED CONTACT PIN SIZE 20	
DIMENSIONS: INCHES [mm]		PRODUCT SPEC 108-151000	SIZE A3	
TOLERANCES UNLESS OTHERWISE SPECIFIED: 0 PLC ± 1 PLC ± 2 PLC ± 3 PLC ±.025 [0.64] 4 PLC ± ANGLES ±		APPLICATION SPEC 114-151003	CAGE CODE 4AFU8	DRAWING NO 1060-20-02XX
MATERIAL 3		WEIGHT 0.15 g	RESTRICTED TO -	
SEE TABLE		CUSTOMER DRAWING	SCALE 6:1	SHEET 1 OF 1
				REV F