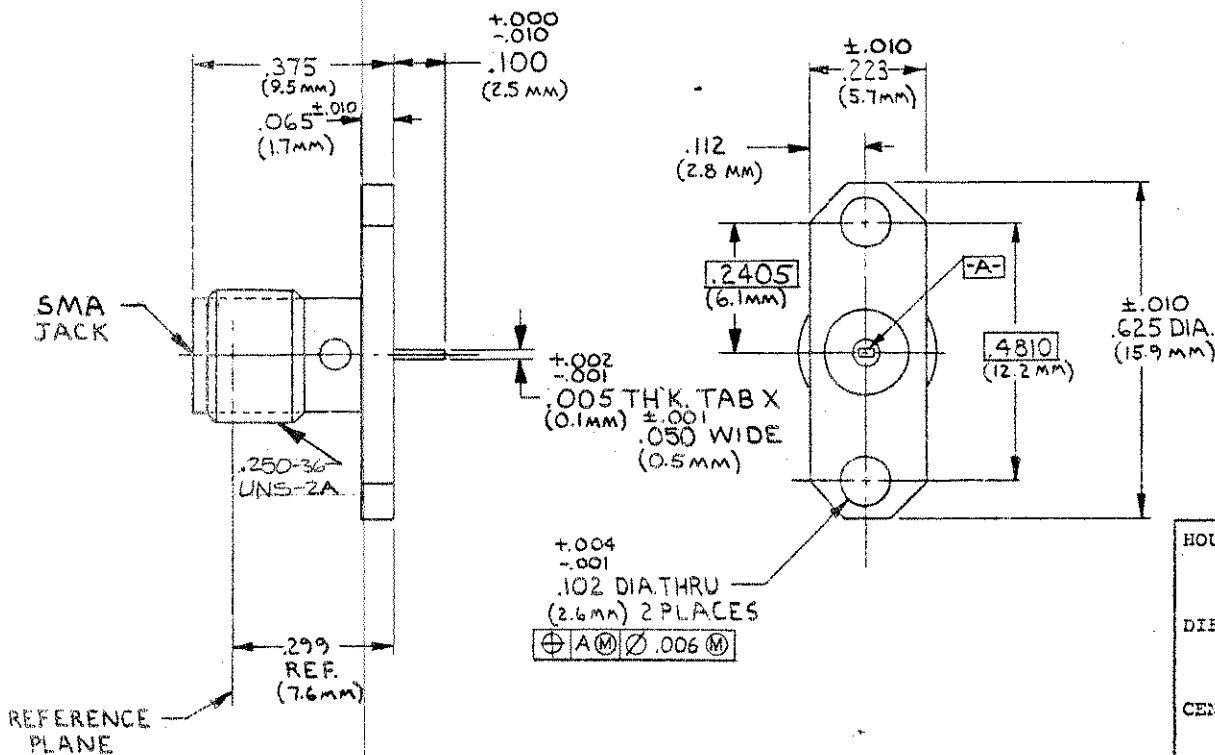



REVISIONS			
REV.	DESCRIPTION	DATE	APP'D
010	RELEASED	6/1/88	[Signature]



COMPONENT	MATERIAL	FINISH
HOUSING	STAINLESS STEEL PER ASTM-A484 AND ASTM-A582, TYPE 303	PASSIVATE PER QQ-P-35
DIELECTRIC	TFE FLOUROCARBON PER MIL-P-19468 AND FED SPEC L-P-403	N/A
CENTER CONTACT	BERYLLIUM COPPER PER QQ-C-530, ALLOY 173	GOLD PLATE PER MIL-G-45204 OVER COPPER PLATE PER MIL-C-14550

NOTES

1. CAPTURED CENTER CONTACT

UNLESS OTHERWISE SPECIFIED DIMENSIONS ARE IN INCHES TOLERANCE ON FRAC. DEC. ANGLES ± 1/64 ± .008 ± 1°	DRAWN M. CATIZONE 5/6/88		MICROWAVE CONNECTOR DIVISION
	CHECKED [Signature] 6/30/88		
THESE DRAWINGS AND SPECIFICATIONS ARE THE PROPERTY OF OMNI SPECTRA INCORPORATED AND SHALL NOT BE REPRODUCED OR COPIED OR USED IN WHOLE OR IN PART AS THE BASIS FOR THE MANUFACTURE OR SALE OF ITEMS WITHOUT WRITTEN PERMISSION	DATE 6/30/88	TITLE SMA FLANGE MOUNT JACK RECEPTACLE CAPTURED CENTER CONTACT TAB TERMINAL (M83517/1-31002)	REV
	APPROVED [Signature] 8/11/88		010
	USE ASSY PROCEDURE	SIZE B	CODE IDENT NO. 26805
	N/A	2052-8004-92	
		SCALE NTS	SHEET 1 OF 1

CUSTOMER 1052936
SHEET 1 OF 1
REV 0