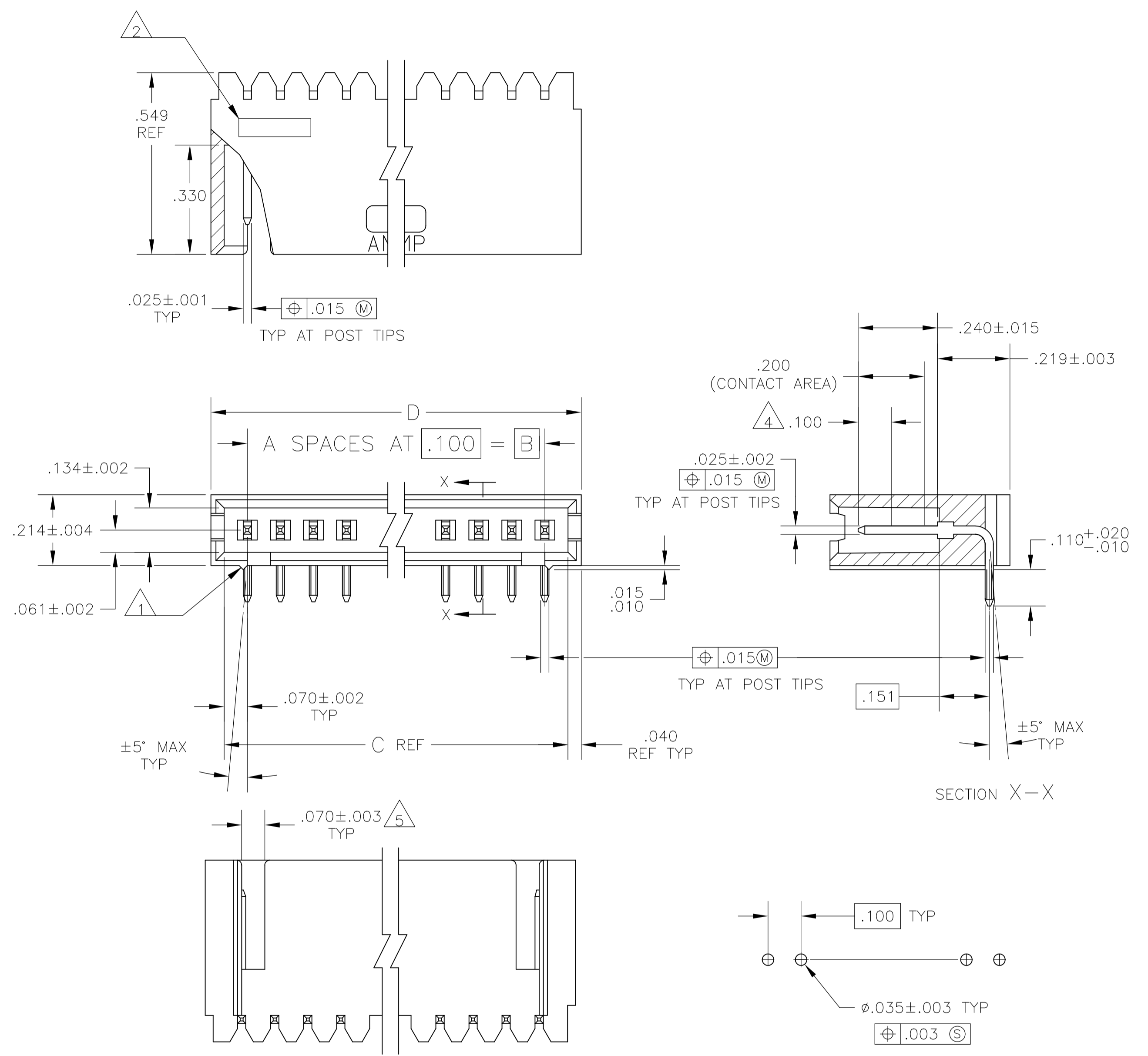


REVISIONS				
P	LTR	DESCRIPTION	DATE	APP'D
N3		PART STATUS UPDATED IN PART LIST TABLE	16FEB2018	SD PS



RECOMMENDED HOLE LAYOUT

- 1 STANDOFFS:
3 TRHU 9 POSN - (2 REQD) ON OUTSIDE ENDS OF HOUSING
10 THRU 18 POSN - (3 REQD) TWO ON OUTSIDE ENDS AND ONE CENTERED ON HOUSING
19 POSN AND LARGER - (4 REQD) TWO ON OUTSIDE ENDS AND TWO EVENLY SPACED WITHIN REMAINING LENGTH OF HOUSING
- 2 RECESSED DATE CODE
- 3 .000030 GOLD IN CONTACT AREA, .000100-.000200 MATTE TIN-LEAD IN SOLDER AREA, ALL OVER .000050 MIN NICKEL
- 4 POINT OF MEASUREMENT FOR GOLD PLATING THICKNESS
- 5 FOR 3 POS ONLY, ONE SLOT .215 WIDE.
- 6 .000030 GOLD IN CONTACT AREA, .000100-.000200 MATTE TIN IN SOLDER AREA, ALL OVER .000050 MIN NICKEL
- 7 OBSOLETE PARTS: OBSOLETE CIS STREAMLINING PER D.RENAUD/D.SINISI

△ OBSOLETE	△	2.620	2.540	2.400	24	25	-7-103361-3
△	△	2.520	2.440	2.300	23	24	7-103361-2
△	△	2.420	2.340	2.200	22	23	-7-103361-1
△ OBSOLETE	△	2.320	2.240	2.100	21	22	-7-103361-0
△	△	2.220	2.140	2.000	20	21	-6-103361-9
△	△	2.120	2.040	1.900	19	20	6-103361-8
△ OBSOLETE	△	2.020	1.940	1.800	18	19	-6-103361-7
△	△	1.920	1.840	1.700	17	18	-6-103361-6
△	△	1.820	1.740	1.600	16	17	-6-103361-5
△	△	1.720	1.640	1.500	15	16	6-103361-4
△ OBSOLETE	△	1.620	1.540	1.400	14	15	-6-103361-3
△	△	1.520	1.440	1.300	13	14	6-103361-2
△ OBSOLETE	△	1.420	1.340	1.200	12	13	-6-103361-1
△	△	1.320	1.240	1.100	11	12	6-103361-0
△ OBSOLETE	△	1.220	1.140	1.000	10	11	-5-103361-9
△	△	1.120	1.040	.900	9	10	5-103361-8
△	△	1.020	.940	.800	8	9	5-103361-7
△	△	.920	.840	.700	7	8	5-103361-6
△	△	.820	.740	.600	6	7	5-103361-5
△	△	.720	.640	.500	5	6	5-103361-4
△	△	.620	.540	.400	4	5	5-103361-3
△	△	.520	.440	.300	3	4	5-103361-2
△	△	.420	.340	.200	2	3	5-103361-1
△ OBSOLETE	△	3.720	3.640	3.500	35	36	3-103361-4
△	△	3.620	3.540	3.400	34	35	3-103361-3
△	△	3.520	3.440	3.300	33	34	3-103361-2
△	△	3.420	3.340	3.200	32	33	3-103361-1
△	△	3.320	3.240	3.100	31	32	3-103361-0
△ OBSOLETE	△	3.220	3.140	3.000	30	31	2-103361-9
△	△	3.120	3.040	2.900	29	30	2-103361-8
△	△	3.020	2.940	2.800	28	29	2-103361-7
△	△	2.920	2.840	2.700	27	28	2-103361-6
△	△	2.820	2.740	2.600	26	27	2-103361-5
△	△	2.720	2.640	2.500	25	26	2-103361-4
△	△	2.620	2.540	2.400	24	25	2-103361-3
△	△	2.520	2.440	2.300	23	24	2-103361-2
△ OBSOLETE	△	2.420	2.340	2.200	22	23	-2-103361-1
△	△	2.320	2.240	2.100	21	22	-2-103361-0
△ OBSOLETE	△	2.220	2.140	2.000	20	21	-1-103361-9
△	△	2.120	2.040	1.900	19	20	1-103361-8
△ OBSOLETE	△	2.020	1.940	1.800	18	19	-1-103361-7
△	△	1.920	1.840	1.700	17	18	-1-103361-6
△	△	1.820	1.740	1.600	16	17	-1-103361-5
△	△	1.720	1.640	1.500	15	16	1-103361-4
△ OBSOLETE	△	1.620	1.540	1.400	14	15	-1-103361-3
△	△	1.520	1.440	1.300	13	14	1-103361-2
△	△	1.420	1.340	1.200	12	13	1-103361-1
△	△	1.320	1.240	1.100	11	12	1-103361-0
△ OBSOLETE	△	1.220	1.140	1.000	10	11	-103361-9
△	△	1.120	1.040	.900	9	10	103361-8
△	△	1.020	.940	.800	8	9	103361-7
△	△	.920	.840	.700	7	8	103361-6
△	△	.820	.740	.600	6	7	103361-5
△	△	.720	.640	.500	5	6	103361-4
△	△	.620	.540	.400	4	5	103361-3
△	△	.520	.440	.300	3	4	103361-2
△	△	.420	.340	.200	2	3	103361-1

PLATING	D	C	B	A	NO. OF POSN.	PART NO.

THIS DRAWING IS A CONTROLLED DOCUMENT. DWN S.A. SHUEY 28SEP89
 DIMENSIONS: INCHES 0 PLC ± .005, 1 PLC ± .005, 2 PLC ± .005, 3 PLC ± .005, 4 PLC ± .005, ANGLES ± .005
 TOLERANCES UNLESS OTHERWISE SPECIFIED: SEE TABLE
 MATERIAL HOUSING: FLAME RETARDANT THERMOPLASTIC, COLOR: BLACK, POSTS: PHOS BRONZE
 FINISH: SEE TABLE
 WEIGHT: -
 CUSTOMER DRAWING
 DW: H. MOLL 30CT89
 APVD: R. FLICKER 30CT89
 PRODUCT SPEC: -
 APPLICATION SPEC: -
 NAME: -
 SIZE: A1, CAGE CODE: 100779, DRAWING NO: 103361
 RESTRICTED TO: -
 SCALE: 4:1, SHEET: 1 OF 1, REV: N3