

© 2020 TE Connectivity. All Rights Reserved.		
PART NUMBER	REV	FIRST USED
1-686961-2	E	354500-1

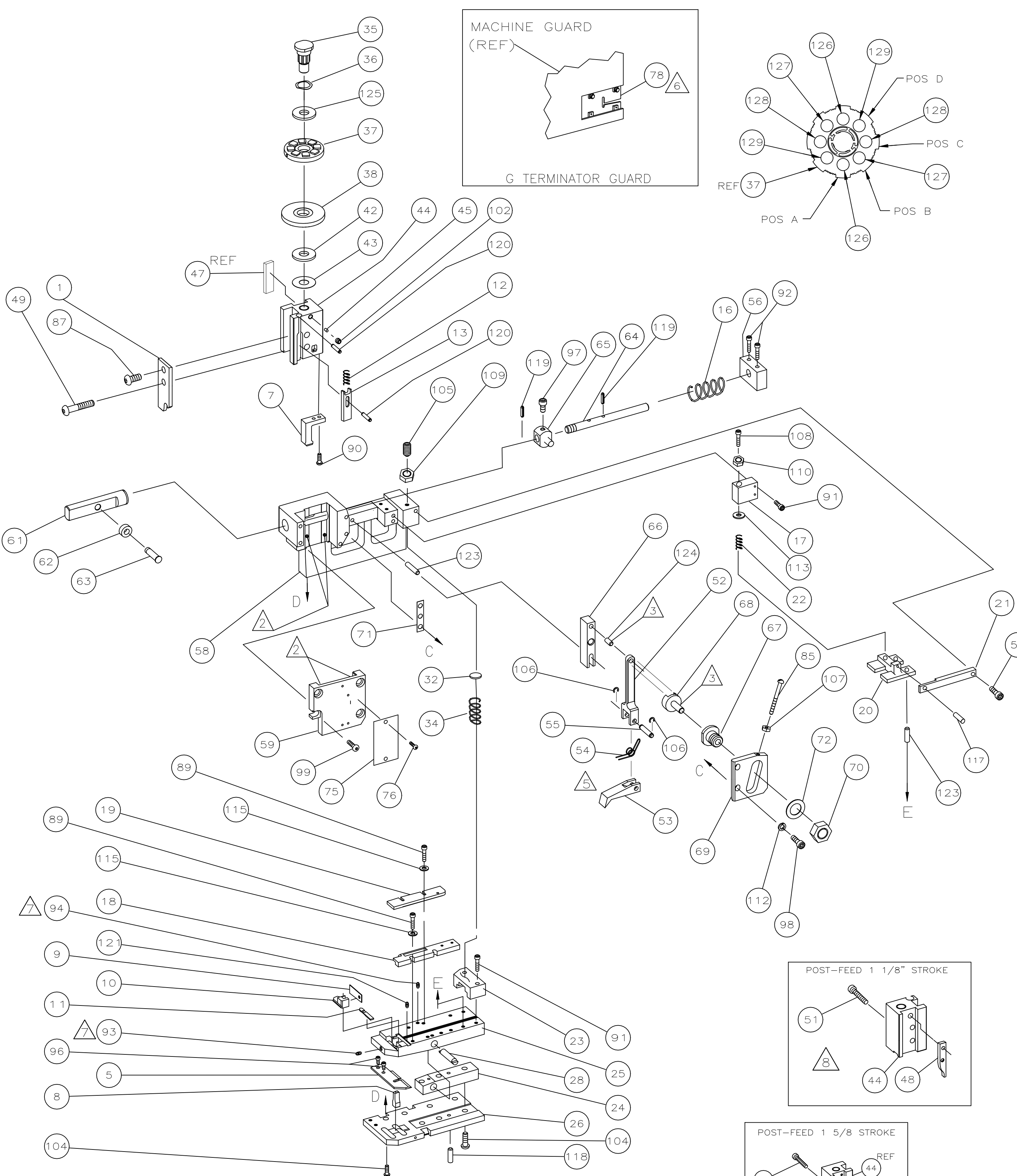
TERMINAL NAME:		CRIMPING DATA	
TAB LOK (RIGHT HAND)		PAD LTR	CRIMP HEIGHT
	61177	A	.072±.002
		B	.062±.002
		C	.056±.002
		D	.052±.002
		CRIMP SIZE	TYPE
		WIRE	.160
		INSUL	-
		FEED	APPL INST
			△18031
			SET UP GAGE
			-
			LAYOUT
			-
TERM APPL SPEC	114-2078	WIRE STRIP LENGTH	.363-.393

REVISIONS				
P	LTR	DESCRIPTION	DATE	BY
E		REVISED PER ECR-23-190096	18OCT2023	GK

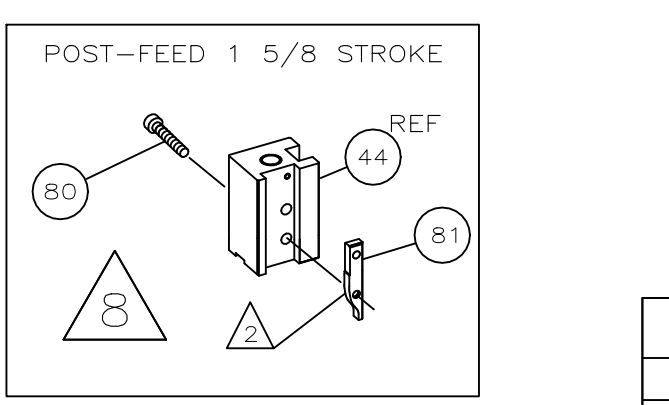
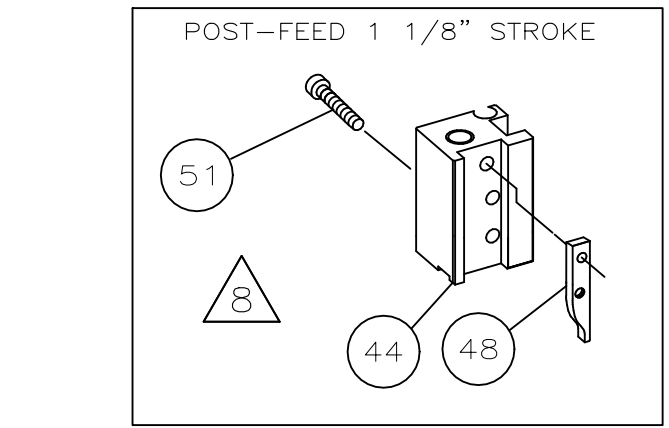
-12 BENCH MODEL G MECH PRE FEED

1	-	A	22594-8	NUT, HEX	70	
1	-	B	240628-1	PLATE, ADJ	69	
1	-	B	240626-1	SHAFT, PIVOT	68	
1	-	B	240633-1	BUSHING	67	
1	-	A	240630-1	LEVER, INTERMEDIATE	66	
1	-	B	240629-1	BLOCK, PIVOT	65	
1	-	A	1633286-1	SCR, ADJ	64	
1	-	B	240659-3	PIN, CAM ROLLER	63	
1	-	B	240658-1	ROLER, CAM	62	
1	-	B	240631-1	ROD, FEED	61	
					60	
1	-	C	455164-1	CAP ASSEMBLY	59	
1	-	D	458984-1	HOUSING	58	
					57	
1	-	B	458361-1	GUIDE, FEED ROD	56	
1	-	B	240624-1	PIN, FEED FINGER	55	
1	-	B	691499-1	SPRING, FEED FINGER	54	
1	-	B	690584-5	FINGER, FEED	53	
1	-	B	240634-1	LEVER, TERMINAL	52	
1	-	A	1-21002-7	SCR, BHC (6-32X 0.38)	51	
1	-	A	1-22353-9	SCREW, SHOULDER	50	
1	-	A	3-21002-5	BOLT, CRIMPER	49	
1	-		690696-1	CAM, POST-FEED 1 1/8 ST	48	
1	-	B	453991-1	CAM, PRE-FEED 1 5/8 ST	47	
					46	
1	-	A	690191-1	PLUG, NYLON	45	
1	-	C	691533-1	RAM	44	
1	-	A	690125-1	WASHER, LAMINATED	43	
1	-	A	1-690124-1	WASHER, RAM	42	
					41	
					40	
					39	
1	-	C	690223-1	DISC, SPACER	38	
1	-	D	354777-1	WIRE DISC, PLASTIC	37	
1	-	B	22480-5	WASHER, SPRING	36	
1	-	B	690212-1	POST, RAM	35	
1	-	A	3-23846-5	SPRING, HINGE BAR	34	
					33	
1	-	A	690573-1	SPACER, SPRING	32	
					31	
					30	
					29	
1	-	B	690582-1	PIN, HINGE	28	
					27	
1	-	C	463873-1	PLATE, BASE	26	
1	-	B	691535-2	HINGE BAR	25	
1	-	C	690571-1	BLOCK, STABILIZER	24	
1	-	C	814222-2	BLOCK, PRESSURE	23	
1	-	A	7-22282-5	SPRING, DRAG	22	
1	-	A	458968-1	LEVER, DRAG	21	
1	-	A	458960-2	DRAG, STOCK	20	
1	-	C	691530-1	GUIDE, STRIP (REAR)	19	
1	-	C	691529-1	GUIDE, STRIP (FRONT)	18	
1	-	B	458978-1	BLOCK, SPRING	17	
1	-	A	4-22284-9	SPRING, FEED RETURN	16	
					15	
					14	
△	1	-	C	692134-5	POSITIONER, TERMINAL	13
△	1	-	A	5-22280-5	SPRING, TERM. POSITIONER	12
△	1	-	B	691525-1	PLATE, REAR SHEAR	11
△	1	-	C	691524-1	ANVIL INSERT	10
△	1	-	B	690569-4	PLATE, FRONT SHEAR	9
△	1	-	D	691523-1	ANVIL	8
△	1	-	B	691532-1	BLADE, SLUG	7
					6	
					5	
					4	
					3	
					2	
△	1	-	C	691531-1	CRIMPER, WIRE	1

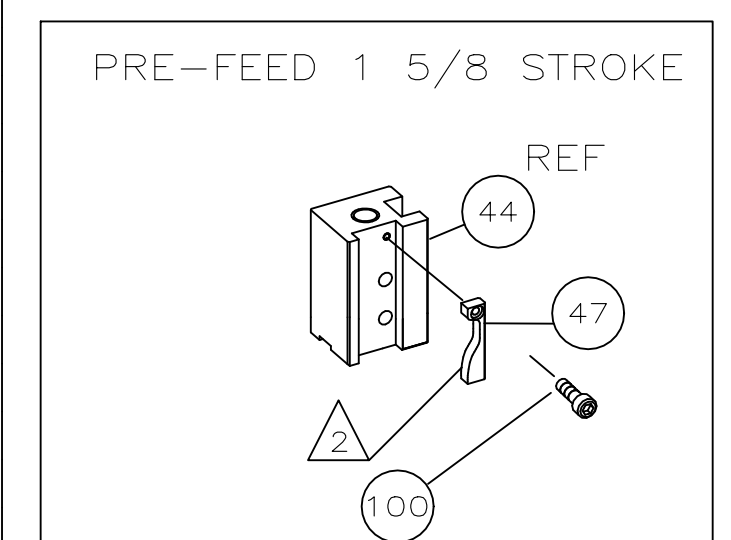
2	-	C	2-354779-8	PIN, WIRE DISC (.3130)D	129	
2	-	C	2-354779-2	PIN, WIRE DISC (.3100)C	128	
2	-	C	1-354779-5	PIN, WIRE DISC (.3065)B	127	
2	-	C	9-354778-6	PIN, WIRE DISC (.2975)A	126	
1	-	A	986950-1	WASHER, FLAT PRECISION	125	
1	-	A	1-21030-2	PIN, DOWEL (Ø187X.62)	124	
3	-	A	1-21030-6	PIN, DOWEL (Ø187X1.25)	123	
					122	
2	-	A	3-21028-2	PIN, SLOTTED SPRING (Ø094X.25)	121	
2	-	A	4-21028-9	PIN, SLOTTED SPRING (Ø125X.38)	120	
2	-	A	5-21028-1	PIN, SLOTTED SPRING (Ø125X.50)	119	
1	-	A	21029-5	PIN, SLOTTED SPRING (Ø188X.75)	118	
1	-	A	21029-3	PIN, SLOTTED SPRING (Ø188X.62)	117	
					116	
4	-	A	21024-4	WASHER, LOCK (#8)	115	
2	-	A	21055-6	WASHER, FLAT (#8)	114	
1	-	A	21899-1	WASHER, FLAT (#6)	113	
2	-	A	21024-5	WASHER, LOCK (#10)	112	
					111	
1	-	A	21018-7	NUT, HEX (10-32)	110	
1	-	A	1-22202-7	NUT, HEX (5/16-24)	109	
1	-	A	3-21000-9	SCREW, SHC (10-32 X 1.00)DRAG	108	
1	-	A	21018-5	NUT, HEX (6-32)	107	
2	-	A	21045-3	RING, RET "C" (Ø187)FD PIN	106	
1	-	A	8-21007-5	SCREW, SKT SET(5/16-24X.75)	105	
7	-	A	2-22733-8	SCREW, BHC (1/4-20X.63)	104	
					103	
1	-	A	21009-2	SCREW, SKT SET(1/4-20X.25)	102	
					101	
2	-	A	1-21003-9	SCREW, FL (6-32X.38)	100	
4	-	A	3-21000-8	SCREW, SHC (10-32X.88)	99	
2	-	A	3-21000-6	SCREW, SHC (10-32X.62)	98	
1	-	A	3-21000-4	SCREW, SHC (10-32X.38)	97	
2	-	A	7-21000-6	SCREW, SHC (10-32X.38)	96	
					95	
△	2	-	A	4-21006-0	SCREW, SKT SET (8-32X.25)	94
△	1	-	A	21061-9	SCREW, SKT SET (8-32X.25)	93
2	-	A	3-21000-0	SCREW, SHC (8-32X.88)	92	
2	-	A	2-21000-9	SCREW, SHC (8-32X.75)	91	
2	-	A	23030-4	SCREW, SHC (NYLOK)(6-32X.62)	90	
4	-	A	2-22603-3	SCREW, HEX (8-32X.62)	89	
					88	
1	-	A	2-21002-2	SCREW, BHC (8-32X.50)	87	
					86	
1	-	A	6-23715-5	SCR, PAN HD(6-32X1.50)FEED ADJ	85	
1	-	A	23030-1	SCREW, SHC(NYLK)(6-32X.25)	84	
					83	
					82	
1	-		238015-1	CAM, POST-FEED 1 5/8 ST	81	
1	-		3-21000-9	SCREW, SHC (10-32X1.00)	80	
					79	
REF	-	B	679532-1	INSERT, GUARD	78	
					77	
2	-	A	21017-2	SCR, DRIVE (#2X.19)ID	76	
1	-	B	461264-1	PLATE, IDENTIFICATION	75	
1	-	A	690603-1	SPRING, ASSIST	74	
					73	
1	-	A	458109-1	WASHER, SPECIAL	72	
1	-	A	690517-1	SPACER	71	



- △ 1 RECOMMENDED SPARE PARTS.
- △ 2 GREASE LIGHTLY.
- △ 3 LUBRICATE DAILY USING NO. 20 MACHINE OIL.
- 4. DO NOT EXCEED 80 C.P.M. WITH THIS APPLICATOR.
- △ 5 AFTER ASSEMBLY OF APPLICATOR, PROPER SPRING PRESSURE (ITEM 34) CAN BE OBTAINED BY TIGHTENING SET SCREW (ITEM 105) UNTIL CONTACT IS MADE WITH SPACER (ITEM 32) THEN TIGHTEN AN ADDITIONAL 5 1/2 - 6 REVOLUTIONS.



- △ 6 GUARD MUST BE IN PLACE WHEN OPERATING APPLICATOR IN A BENCH MACHINE.
- △ 7 APPLY SEALANT PN 1-23419-5.
- △ 8 THIS APPLICATOR IS SETUP WITH A 1 5/8" (40 mm) PRE FEED CAM. A 1 1/8" (30 mm) AND A 1 3/8" (40 mm) POST FEED CAM ARE ALSO INCLUDED WITH THIS APPLICATOR.



QTY REQD PER ASSY	U/M	DWG SIZE	PART NO	DESCRIPTION	ITEM NO
REVISION OF EACH ASSY NO (WHEN BLANK, USE DWG REVISION)					
PARTS LIST					

QTY REQD PER ASSY	U/M	DWG SIZE	PART NO	DESCRIPTION	ITEM NO
REVISION OF EACH ASSY NO (WHEN BLANK, USE DWG REVISION)					
PARTS LIST					

THIS DRAWING IS A CONTROLLED DOCUMENT.

DIMENSIONS: INCHES	TOLERANCES UNLESS OTHERWISE SPECIFIED:	DIN M. O'BRINE 10-10-94	TE Connectivity
0 PLC ± .005	1 PLC ± .005	10-10-94	
2 PLC ± .005	3 PLC ± .005		
4 PLC ± .005	ANGLES ± .005		
FINISH			

CUSTOMER AND ASSEMBLY DRAWING