

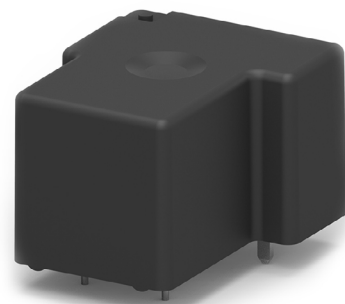
# T9G SERIES

DC Coil 30A PCB Relay

# 30% Smaller



# VS.

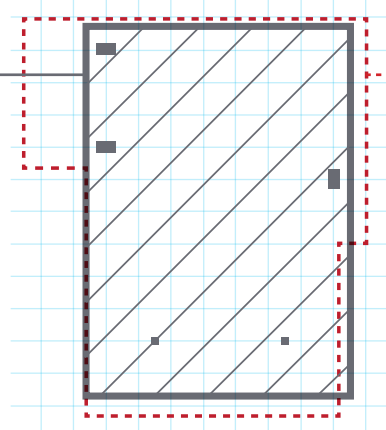


## T9G

29mm length  
21.5mm width  
15.7mm height

## T9A

32.5mm length  
27.4mm width  
20.4mm height



Uses **10%**  
less energy\*

**13%** less PCB  
floor space...

# Same Footprint

\*In certain applications

Visit [te.com/T9G](http://te.com/T9G)  
for a product sample



# T9G SERIES

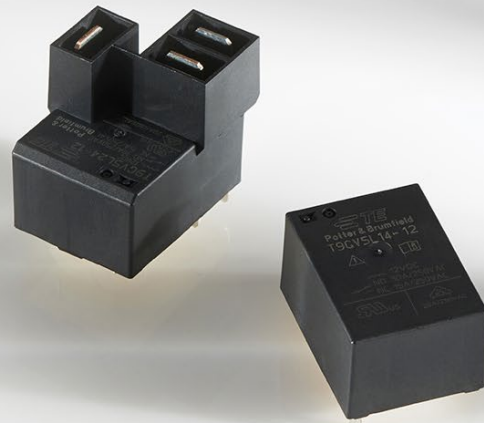
## DC Coil 30A PCB Relay

### Applications

- HVAC
- Appliances
- Industrial Controls
- Energy Management

### Features and Benefits

- 30% smaller package size
- Creepage / clearance (8mm @ voltage ratings up to 480VAC) with reinforced insulation
- UL, VDE and CQC Listings
- PCB and Quick Connect terminations
- RoHS Compliant Cadmium Free Contact
- Better PCB utilization in same footprint



Visit [te.com/T9G](https://te.com/T9G)  
for a product sample