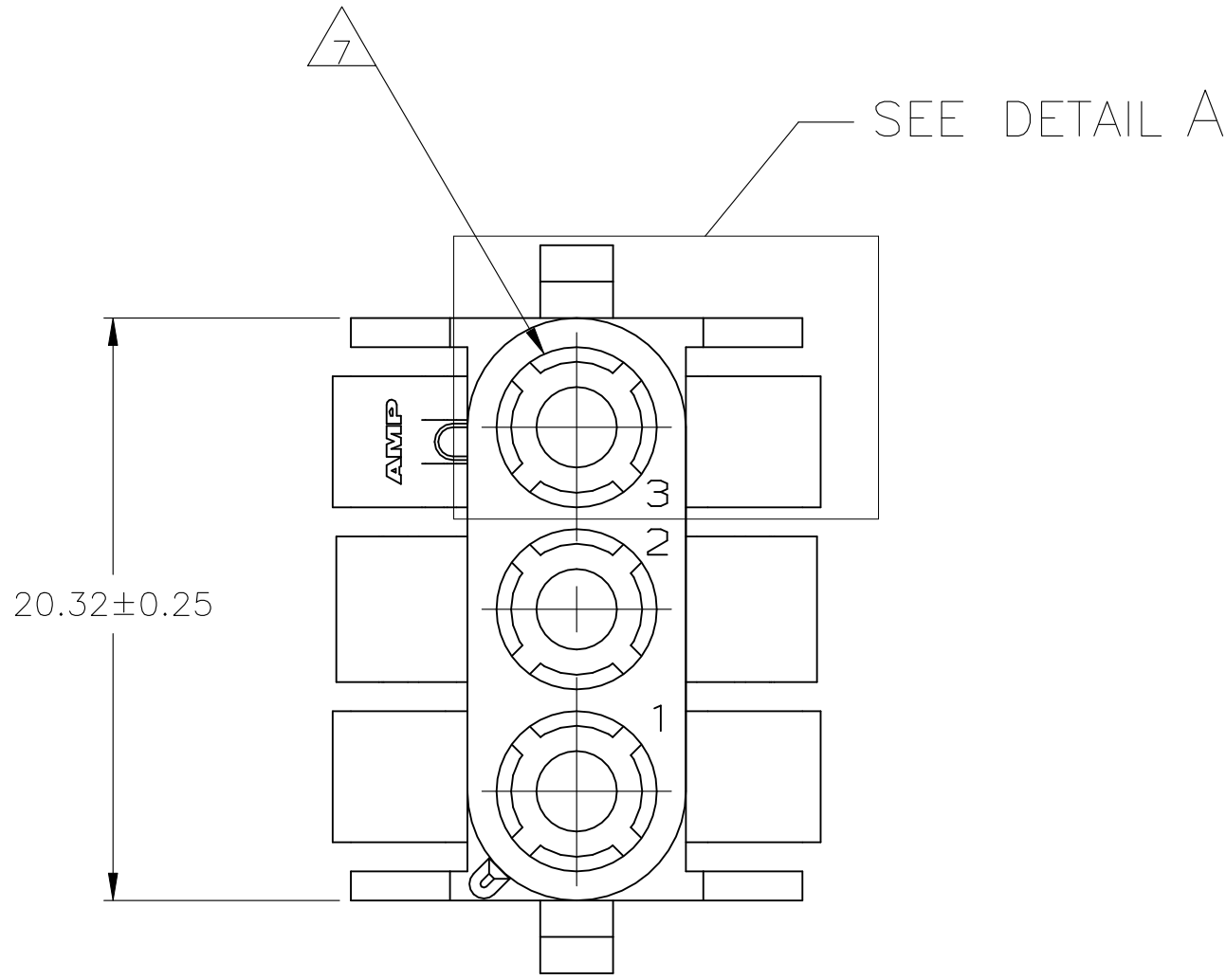
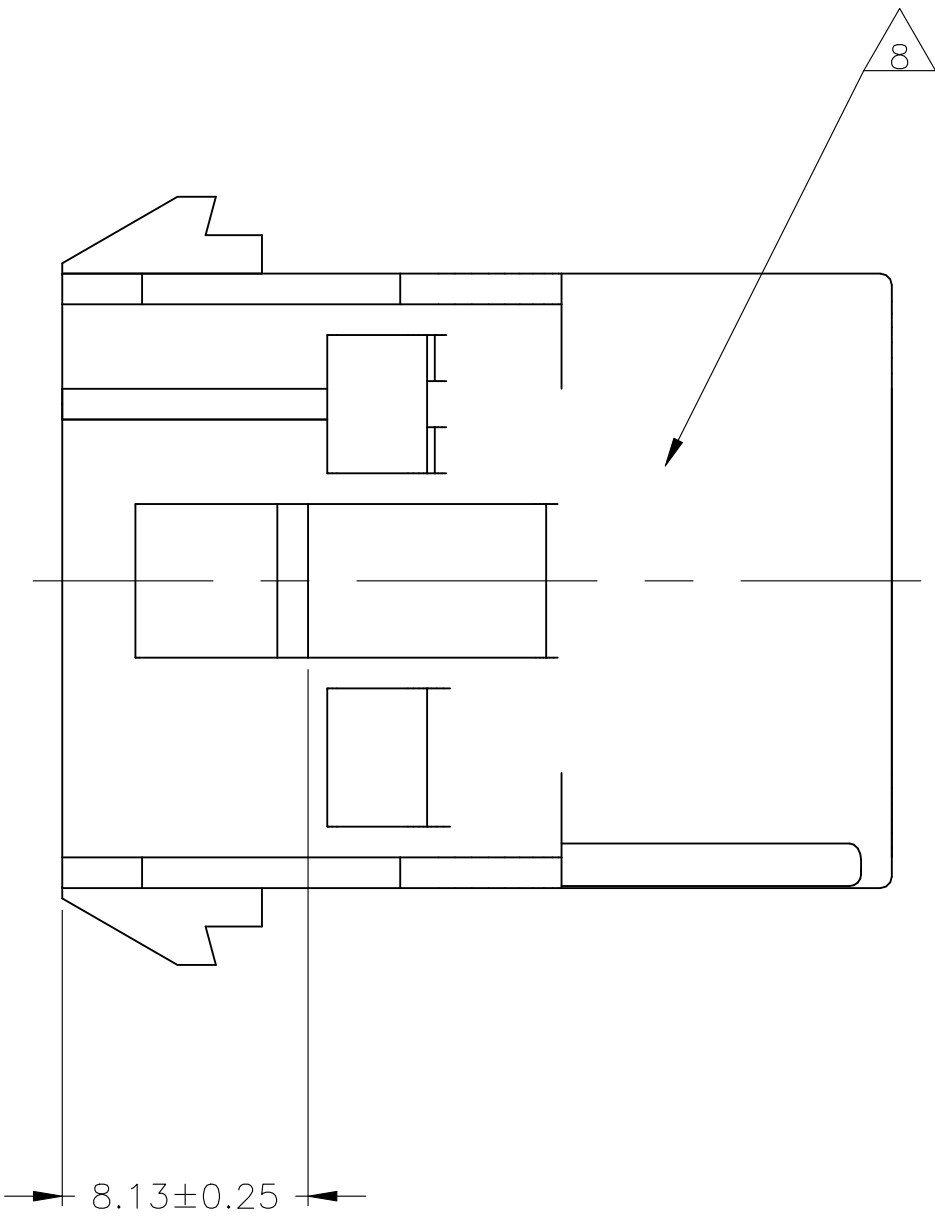
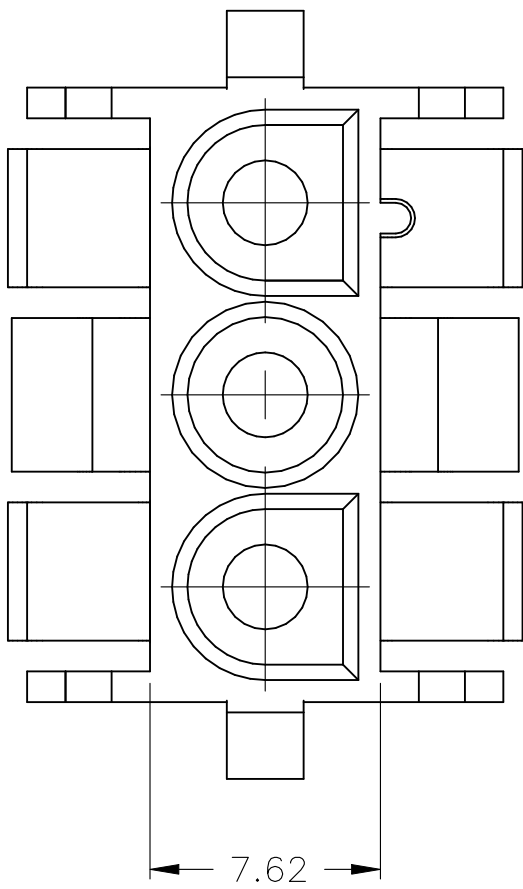
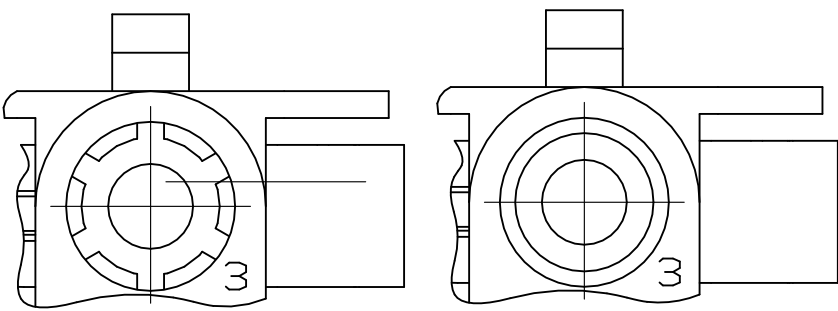


D

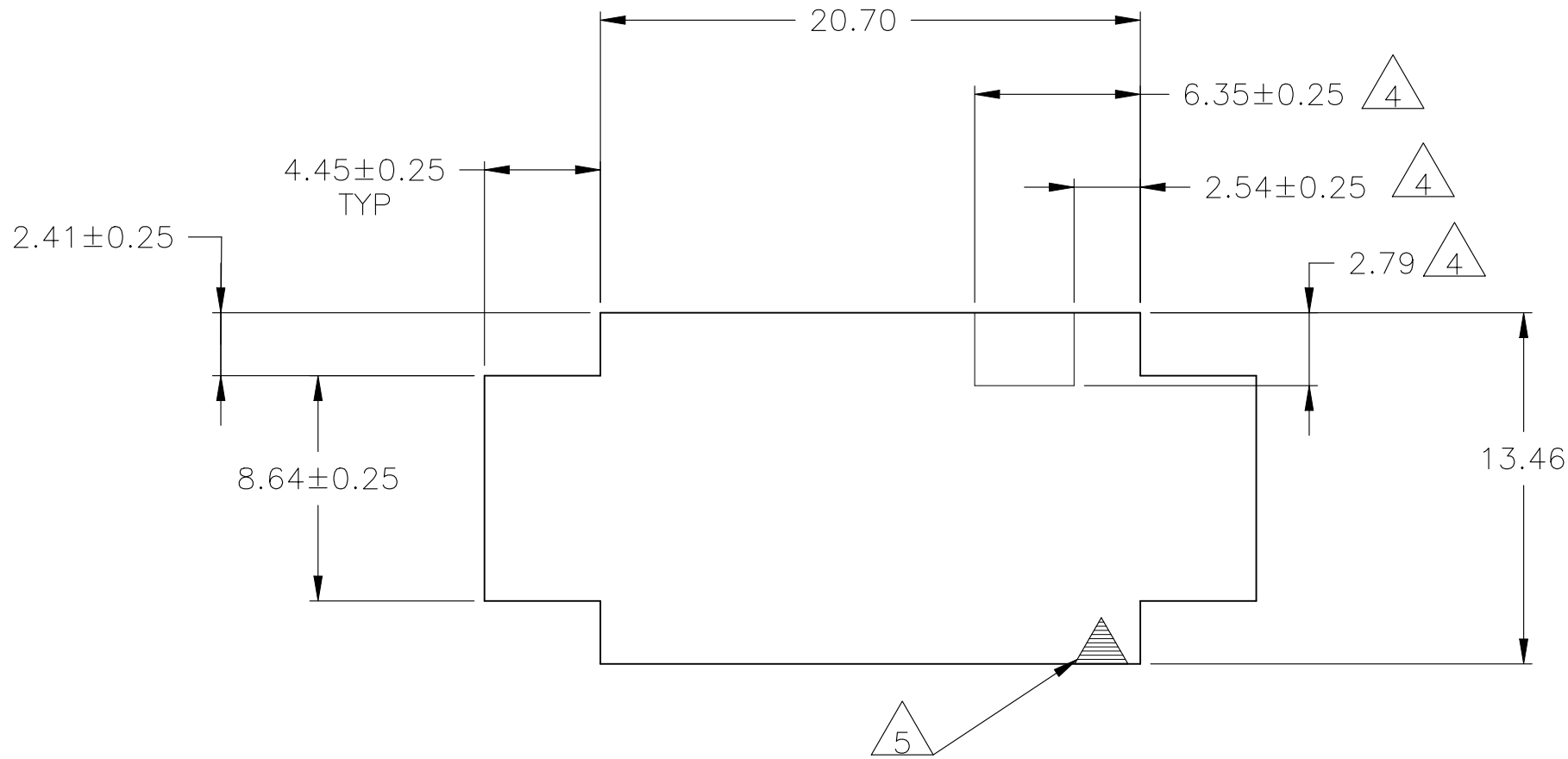
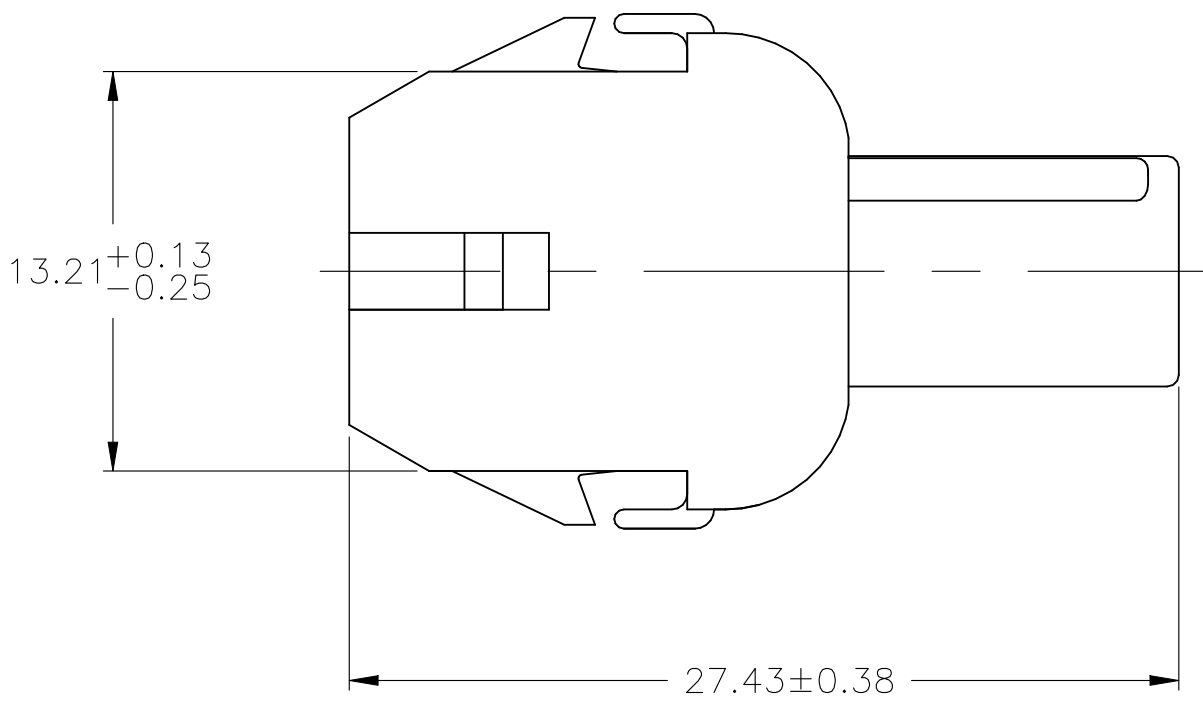


- MATES WITH APPROPRIATE UNIVERSAL MATE-N-LOK™ PLUG.
- RECOMMENDED PANEL THICKNESS 0.76 - 2.29.
- PANEL MUST BE PUNCHED SO THAT THE HOUSING ENTERS THE PANEL IN THE SAME DIRECTION AS THE PUNCH.
- OPTIONAL FOR KEYING HOUSING IN PANEL.
- CIRCUIT NUMBER 1 LOCATION.
- DIMENSIONS SHOWN REPRESENT PRODUCT IN DRY, AS MOLDED, CONDITION. ADDITIONAL 2% GROWTH DUE TO SUBSEQUENT MOISTURE ABSORPTION MAY OCCUR AND SHOULD BE ACCOUNTED FOR
- FOUR RIBS EQUALLY SPACED, NO SPECIFIC ORIENTATION. NO RIBS OR SIX RIBS EQUALLY SPACED, NO SPECIFIC ORIENTATION, OPTIONAL.
- UNDERWRITERS RECOGNIZED COMPONENT LOGO TO BE LOCATED ONCE EACH ON SIDE OF HOUSING.
- MATERIAL CORRESPONDING TO THE REQUIRMENT OF IEC60335-1 (INCL. GLOW WIRE TEST 750° C WITHOUT FLAME)

C

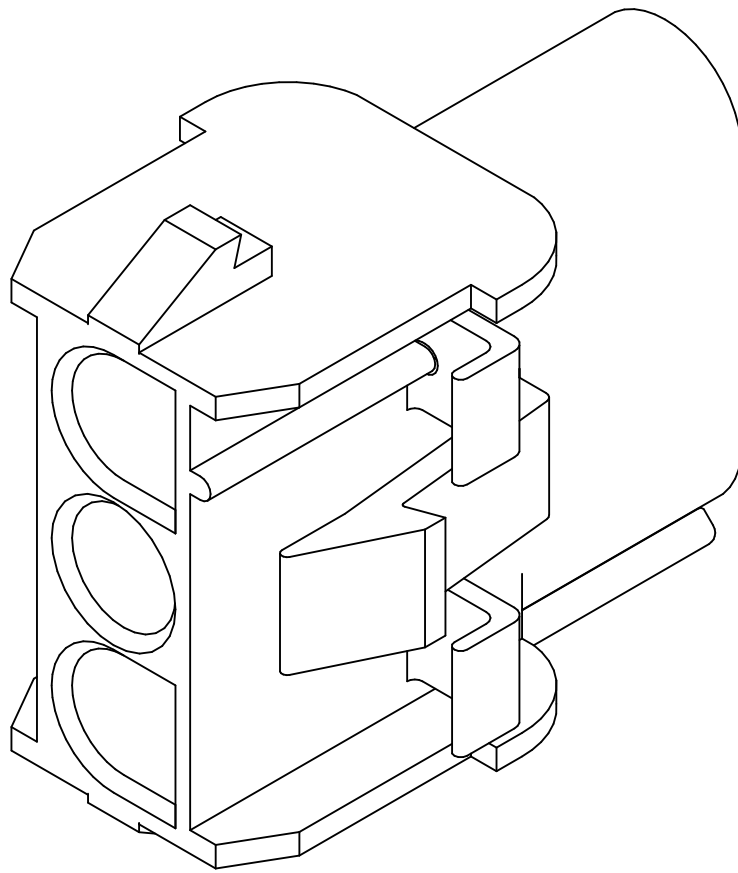


DETAIL A
OPTIONAL CONSTRUCTION



RECOMMENDED PANEL CUT OUT

B





3-DIMENSIONAL MODEL
NTS

4.45	.175	27.43	1.080
2.79	.110	20.70	.815
2.54	.100	20.32	.800
2.41	.095	13.46	.530
2.29	.090	13.21	.520
0.76	.030	8.64	.340
0.38	.015	8.13	.320
0.25	.010	7.62	.300
0.13	.005	6.35	.250
MM	IN	MM	IN

CONVERSION TABLE

NATURAL	△PA 66 UL94V-0 (GWT 750°C NO FLAME)	2178474-2
NATURAL	PA6 UL94V-0	2178474-1
COLOR	MATERIAL	PART NUMBER

THIS DRAWING IS A CONTROLLED DOCUMENT.		DWN MGT	24JUN2013	 TE Connectivity						
		CHK R.P	24JUN2013							
DIMENSIONS:		TOLERANCES UNLESS OTHERWISE SPECIFIED:		NAME						
mm		APVD R.P								
		PRODUCT SPEC		CAP.3 CIRCUIT, UNIVERSAL MATE-N-LOK™ —						
		APPLICATION SPEC								
		WEIGHT				SIZE	CAGE CODE	DRAWING NO	RESTRICTED TO	
		MATERIAL				FINISH		A1 00779 C=2178474		—
		SEE TABLE				—		CUSTOMER DRAWING		SCALE 4:1