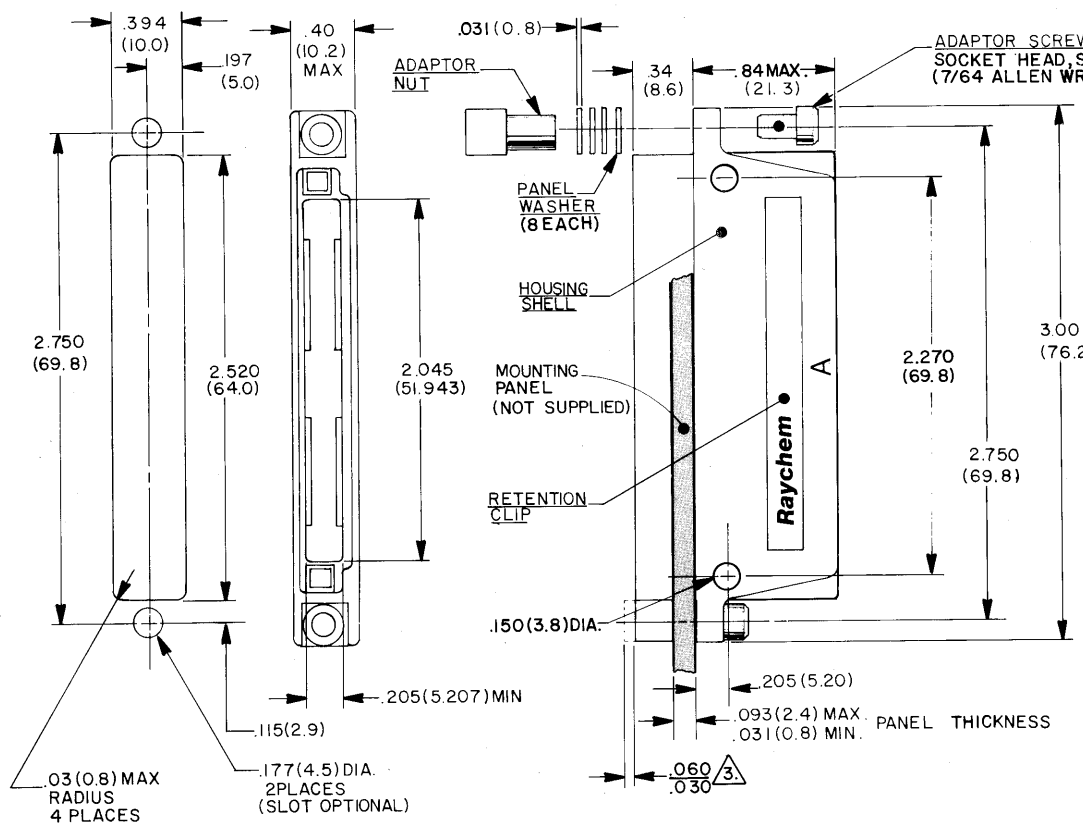


NO Released  
 A REVISED PER ECN T-15364



NOTES:

- MATERIAL:**
- A. HOUSING SHELL; ALUMINUM ALLOY PER QQ-A-591.
  - B. RETENTION CLIP; COPPER ALLOY 172 PER QQ-C-533.
  - C. ADAPTOR SCREW; STAINLESS STEEL PER QQ-S-763, 300 SERIES.
  - D. ADAPTOR NUT; STAINLESS STEEL PER QQ-S-763, 300 SERIES.
  - E. PANEL WASHER; STAINLESS STEEL PER QQ-S-763, 300 SERIES.
- FINISH:**
- A. HOUSING SHELL; BLACK ANODIZE PER MIL-A-8625, TYPE II, CLASS 2.
  - B. RETENTION CLIP; NICKEL PLATE PER MIL-C-26074, CLASS 3, GRADE B.
  - C. ADAPTOR SCREW; PASSIVATED PER-P-35.
  - D. ADAPTOR NUT; PASSIVATED PER-P-35.
  - E. PANEL WASHER; PASSIVATED PER-P-35.
- CONNECTOR MUST BE MOUNTED CONFORM TO THIS DIMENSION.**

SPECIFICATION CONTROL DRAWING

ITEM	QTY	PART NUMBER	DESCRIPTION	REVISION	DATE	APPROVED
<p>ALL DIMENSIONS OTHER THAN SPECIFIED ARE IN INCHES AND TOLERANCES ARE:</p> <p>XXX .005 (0.1)</p> <p>XX .02 (0.5)</p>						
DESIGNED		SA. LOPEZ	10-23-78	<p><b>Raychem</b></p> <p>RAYCHEM CORPORATION            300 CONSTITUTION DRIVE            MENLO PARK, CALIFORNIA 94025</p> <p>TITLE: RECEPTACLE HOUSING            2 INCH,            WITHOUT CABLE CLAMP</p>		
CHECKED		Jay	10-26-78			
APPROVED		AR	260578			
MATERIAL		APPROVED				
FINISH		APPROVED				
PART NUMBER		6448-W014		<p>REV: 00000</p> <p>MTC50-YH2-002</p>		
PROJECT		6448-W014		<p>WEIGHT</p> <p>SHEET 1 OF 1</p>		

If this document is printed it becomes uncontrolled.  
 Check with the web for latest revision.

DO NOT SCALE THIS DRAWING