


DO NOT SCALE

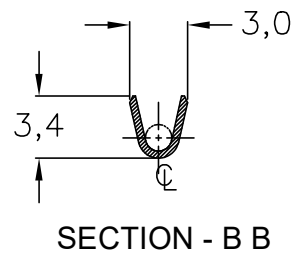
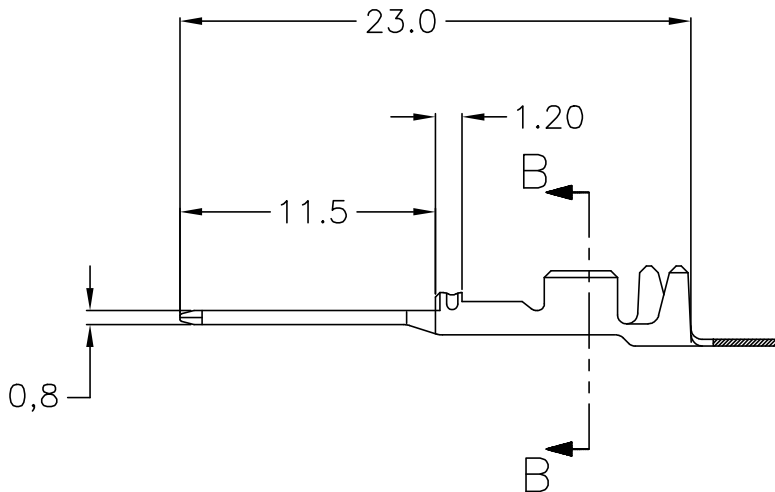
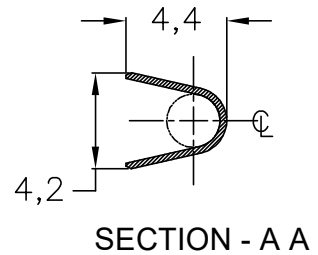
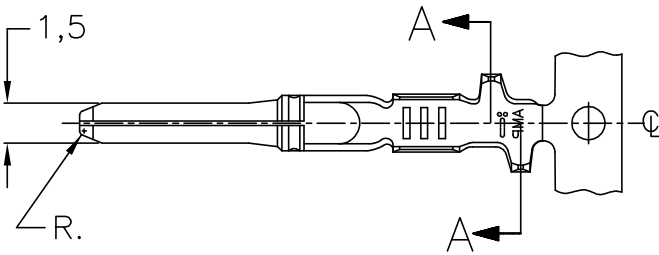
LOC
AP

DIST
—

REVISIONS

| P | LTR | DESCRIPTION | DATE | DWN | APVD |
|---|-----|-------------------------------|---------|-----|------|
| | A1 | REVISED DRAWING ECO-18-005813 | 08OCT18 | NCL | JMN |



DO NOT REVISE EXCEPT BY CAD

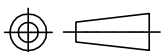


INSUL. RANGE
ø1,9-2,6
mm

WIRE RANGE
1,0-2,0
mm²

| | | |
|--------------------------|----------------|-------------|
| PRÉ-ESTANHADO PRE TIN | LATÃO BRASS | 1480760-1 |
| FINISH | MATERIAL | PART NUMBER |

| | | | |
|--|---------------------------------|---|--------------------------------|
| DIMENSIONS: ZPT | DWN M.R.BRIZ 05AUG02 | MATERIAL VER TABELA/SEE TABLE | FINISH VER TABELA/SEE TABLE |
| TOLERANCES UNLESS OTHERWISE SPECIFIED: | CHK P.L.FARIA 05AUG02 |  TYCO ELECTRONICS do Brasil LTDA. São Paulo, Brasil | |
| | APVD E.G.OLIVEIRA 05AUG02 | | |
| | PRODUCT SPEC — | | |
| 0 PLC ± — 1 PLC ± 0,3 2 PLC ± — 3 PLC ± — 4 PLC ± — ANGLES ± 2° | APPLICATION SPEC 114-37020 | NAME TERMINAL 1.5, CLEAN BODY TAB. | RESTRICTED TO — |



WEIGHT ---/---
CUSTOMER DRAWING

SIZE
A4

CAGE CODE
—

DRAWING NO
C-1480760

SCALE 3:1

SHEET 1 OF 1

REV A1

RELEASED FOR PUBLICATION ,1996.

THIS DRAWING IS UNPUBLISHED.

BY AMP INCORPORATED. ALL RIGHTS RESERVED. COPYRIGHT 19