



# RJ *point five* connector

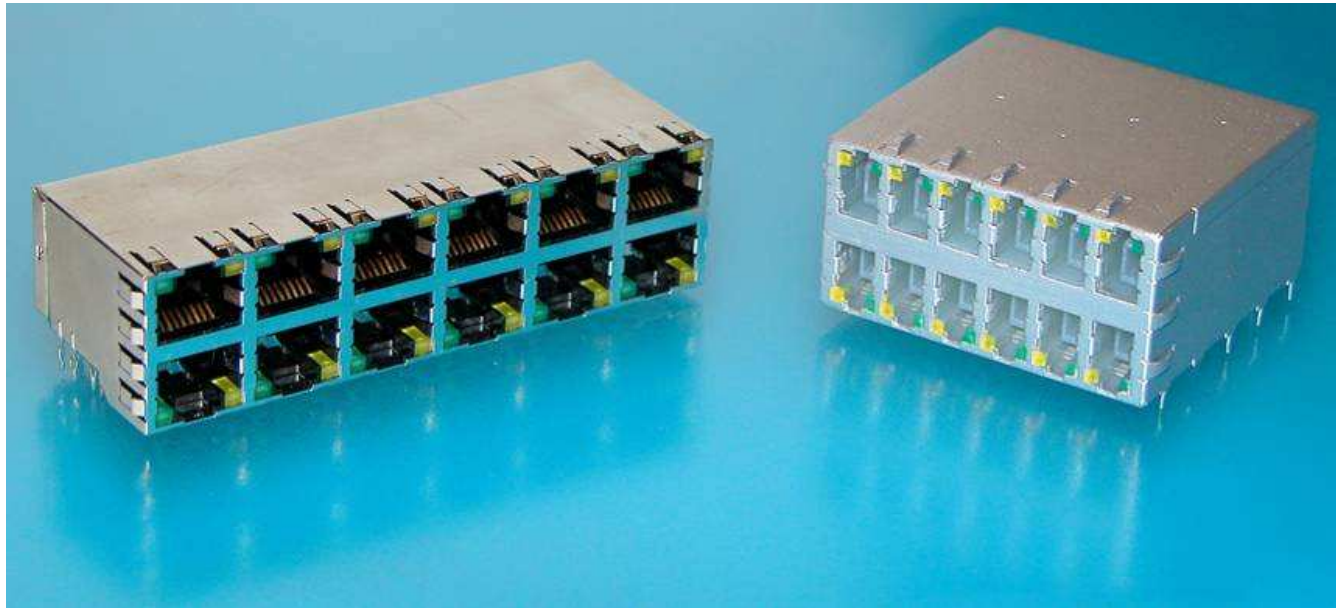
## Double Density Gigabit Connector Solution

March 30, 2011

© 2011 Tyco Electronics Corporation. All Rights Reserved.  
RJ *point five*, TE Connectivity, TE Connectivity (logo) and TE (logo) are trademarks. Other logos, products and/or Company names might be trademarks of their respective owners.



## RJ *point five* connector 50% width of standard RJ45s connector



- Product intended for 1 Gigabit applications where increased port density is required
- Doubles the amount of standard RJ45 connector connections in same real estate

# Product Description

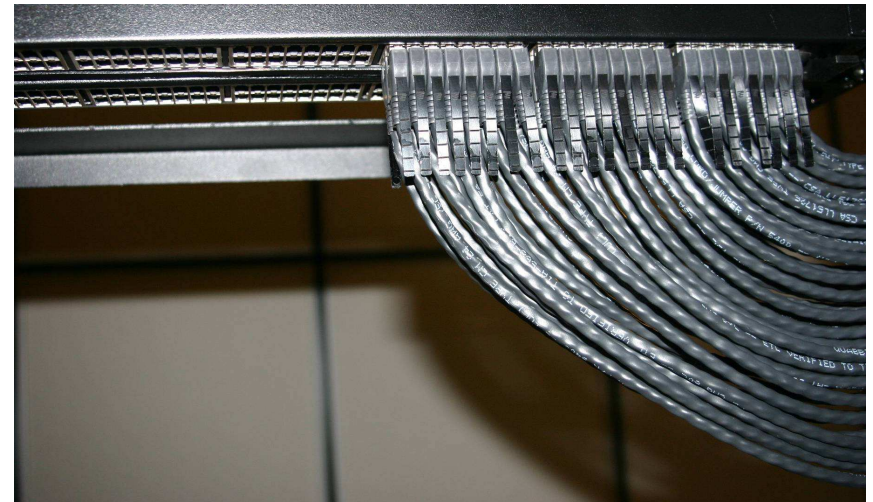
## Features

- Integrated magnetics and non-magnetic Solutions available for 1000base -T apps
- Roadmap supports: PoE+, 10G over Cat6a, and cable management solutions
- Same footprint for mag and non-mag versions
- Increased density (1/2 size of RJ45 connector)
- Improved electrical performance
  - Minimizing 3-6, 4-5 crossover
- Field termination capable on cable assemblies
- Ergonomic features to allow easy plug extraction
- Improved LED visibility
- RoHS compliant

## RJ point five connector vs RJ45 connector

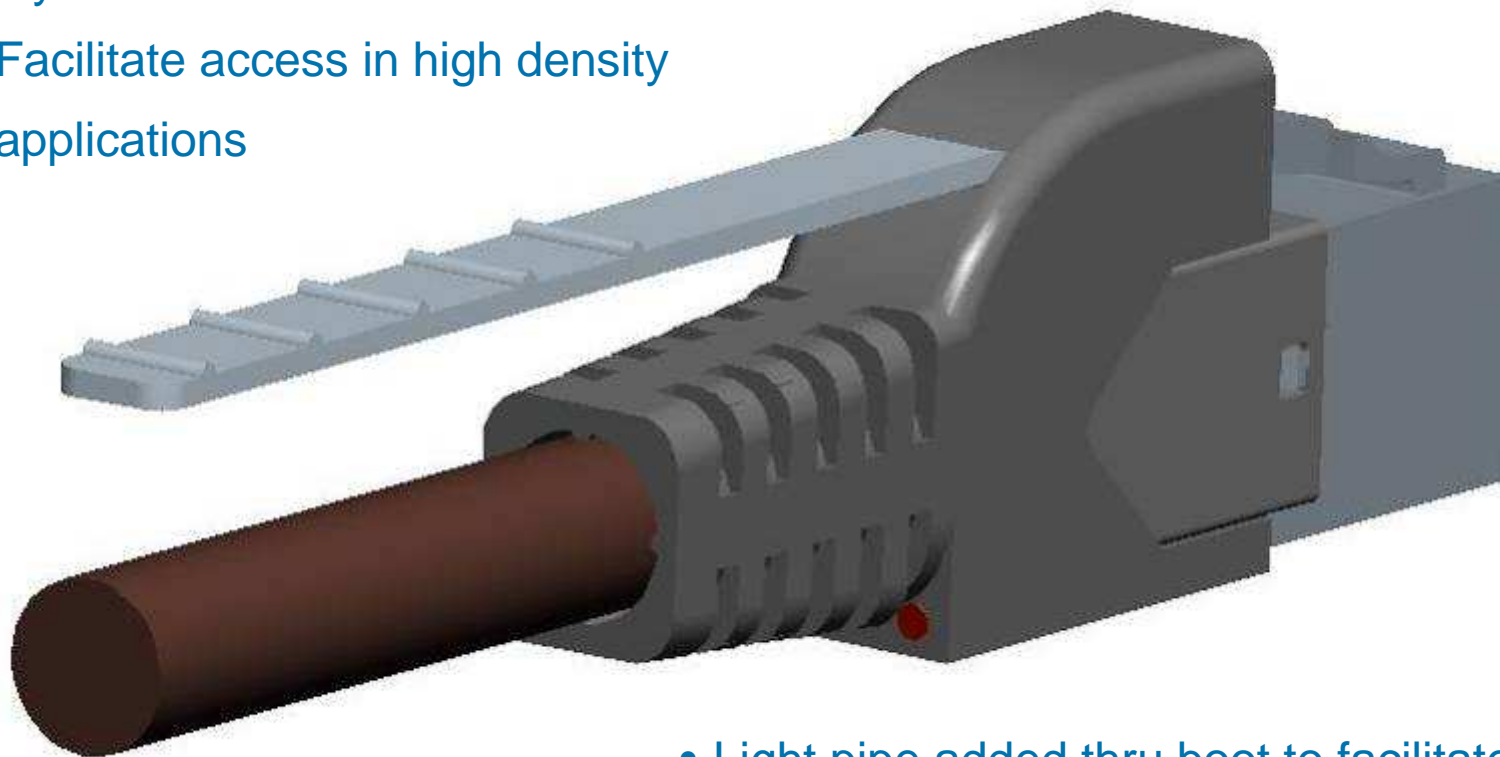


## RJ point five cables



# Plug Assembly

- Tether engages with mod jack style latch
- Facilitate access in high density applications



- Light pipe added thru boot to facilitate visual identification with high density front panel

# RJ *point five* Plug Assembly



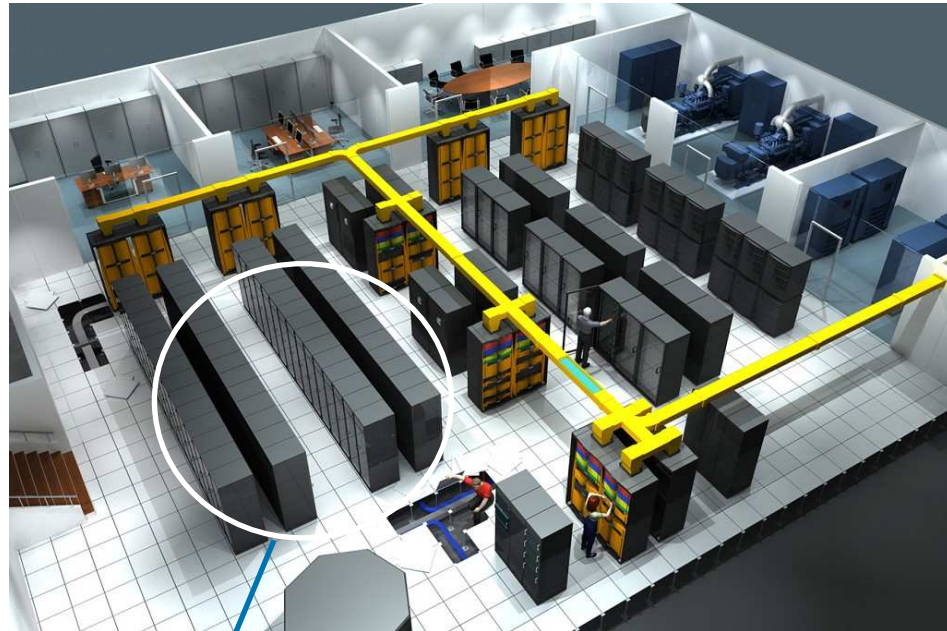
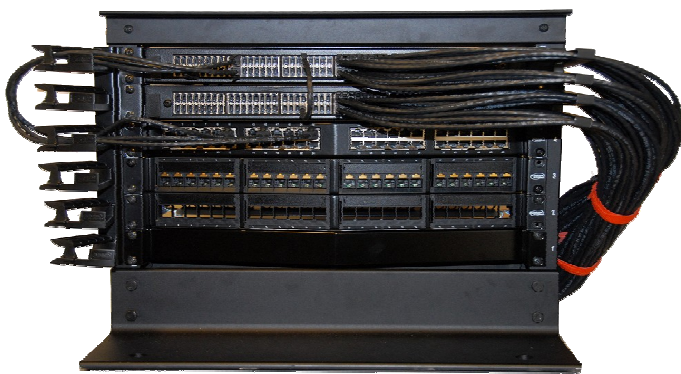
- Illustrates the LEDs passing thru the cable assembly strain relief
- The lower port illustrates the LEDs that are recessed within the RJ *point five* receptacle port
- Tether to facilitate easy extraction in hi-density applications



# Potential Applications Data Center

- Switching applications in wiring closets
- Stackable switches
- Top of server switching applications

RJ *point five* connector demo box



# Potential Applications Enterprise

- Hi-density I/O modules for router applications
- Any application where increased port density is required
- 1:1 plug ratio allows to easily incorporate entire network with less real estate



# Advantages

- Modular design
  - Quickly allow product extensions for other form factors (2x8, 2x6, 2x2, etc)
- Improved density
  - Supports 96 ports on standard line card with 1:1 relationship
- Improved electrical performance (return loss & mode convergence)
  - Minimizing 3-6, 4-5 crossover in contacts
- Improved port indicators LED visibility
  - LEDs are brought thru the cable strain relief for easier system status monitoring.
- Lower total cost of ownership per port
  - Offers field installations on cable assemblies, eliminating the need for high cost, factory terminated solutions
  - Doubles density of gigabit ports in the same real estate, increases network capacity 100%

# Current Product Offerings

## Part # Description

- 2007669-1 2x8 Receptacle R/G LEDs w/ Integrated Magnetics
- 2007669-2 2x8 Receptacle Y/G LEDs w/ Integrated Magnetics
- 2057133-1 2x8 Receptacle R/G LEDs w/ No Magnetics
- 2057133-2 2x8 Receptacle Y/G LEDs w/ No Magnetics
- 2057004-1 2x12 Receptacle R/G LEDs w/ Integrated Magnetics
- 2057004-2 2x12 Receptacle Y/G LEDs w/ Integrated Magnetics
- 2057134-1 2x12 Receptacle R/G LEDs w/ No Magnetics
- 2057134-2 2x12 Receptacle Y/G LEDs w/ No Magnetics
- 2007312-1 Plug Kit Available
- 2074494-1 RJ *point five connector* to RJ45 0.3 meters (other lengths available)
- 2074495-1 RJ *point five connector* to RJ *point five connector* 3.0 meters (other lengths available)

# Support Materials

- Product information available at: <http://www.te.com/products/rjpointfive>

Document Number	Description
3-1773454-0	Quick Reference Guide
108-2341	Product Specification
114-13228	Receptacle Application Sheet
408-10243	Cable Assembly Termination Instruction Sheet
114-13235	Plug Kit Application Sheet

# Contacts

- RJ *point five connector* Product Management Contacts

## **Magnetics USA PM**

Karen Vineis

Ph (775) 850-5223

[kvineis@te.com](mailto:kvineis@te.com)

## **Non-Magnetics USA PM**

Gretchen Troutman

Ph (717) 986-5241

[gltroutm@te.com](mailto:gltroutm@te.com)

## **A/P Regional PM**

Kenneth Chung

Ph (852) 2738 8860

[kenneth.chung@te.com](mailto:kenneth.chung@te.com)

## **EMEA Regional PM**

Toine Van Laarhoven

Ph (31) 73-6246524

[t.laarhoven@te.com](mailto:t.laarhoven@te.com)

## **Sales & Mkt Analyst**

Marcus McElroy

Ph (775) 762-5885

[Marcus.mcelroy@te.com](mailto:Marcus.mcelroy@te.com)

## **Business Support Supervisor**

Hung Huey

Ph (775) 850-5215

[Hung.huey@te.com](mailto:Hung.huey@te.com)